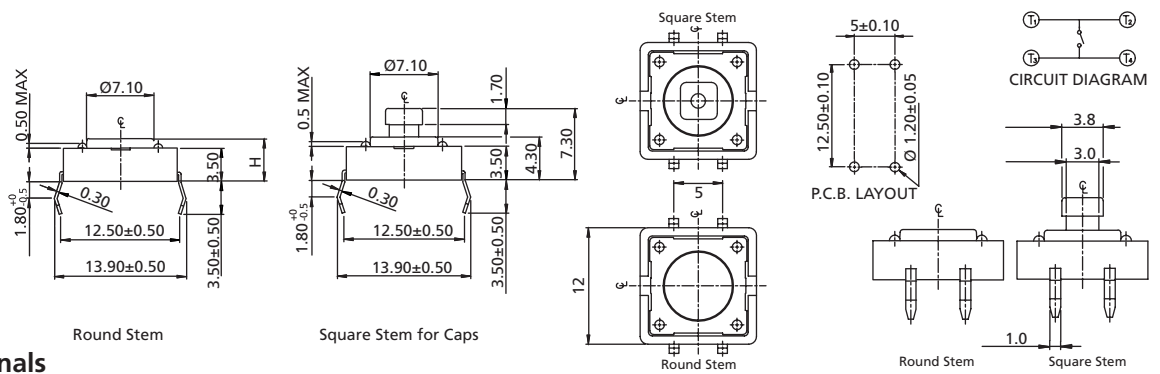


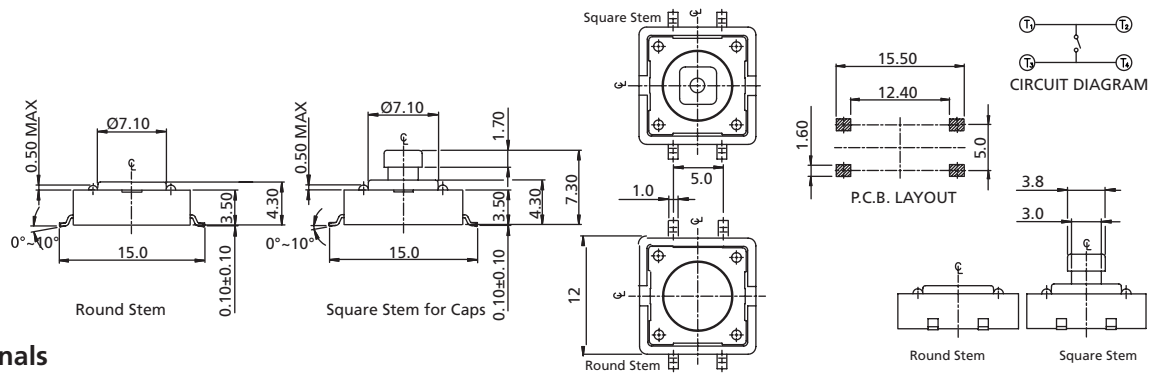
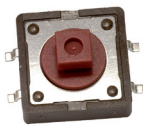
Tactile Switches

Standard 12 x 12 mm Tactile Switches

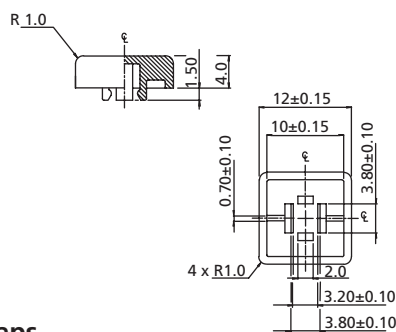
TP4 Series



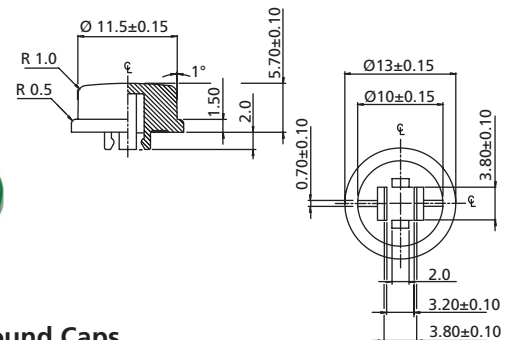
TP4H THT Terminals



TP4S SMT Terminals



K12S Square Caps



K12R Round Caps

How to order:

TP4 + (Caps)

1 TYPE OF TERMINALS:

- H THT
- S SMT

2 Dimension H:

- 1 H=4.3mm (Round Stem)
- 4 H=7.3mm (Square Stem 3.8mm)
- 5 H=8.5mm (Round Stem)

3 STEM COLOR & OPERATING FORCE:

- AK Black & 160±50gf
- K Brown & 160±50gf
- C Red & 260±50gf
- J Salmon & 320±80gf

4 PACKAGE STYLE:

- BK Bulk Pack (TP4H Only)
- TB Tube
- TR Tape & Reel (TP4S Only)

Optional:

5 CAP TYPE (Only for Square Stems):

- K12S Square Caps
- K12R Round Caps

6 COLOR OF CAPS:

- A Black
- B Ivory
- C Red
- E Yellow
- F Green
- G Blue
- H Gray
- S Salmon

General Specifications:

MATERIALS

- » Contact Disc: Phosphor Bronze with silver cladding
- » Terminal: Brass with silver plated

MECHANICAL

- » Stroke: 0.35 ± 0.1 mm
- » Operation Temperature: -25°C to +70°C
- » Storage Temperature: -30°C to +80°C

ELECTRICAL

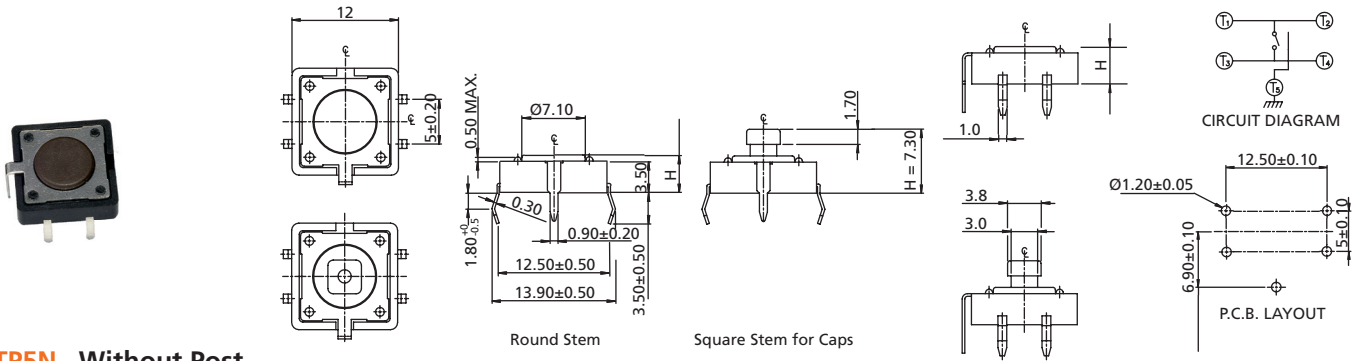
- » Electrical Life: 100,000 cycles for 320gf & 260gf
200,000 cycles for 160gf
- » Rating: 50mA, 12VDC
- » Contact Arrangement: 1 pole 1 throw

LEADFREE SOLDERING PROCESSES

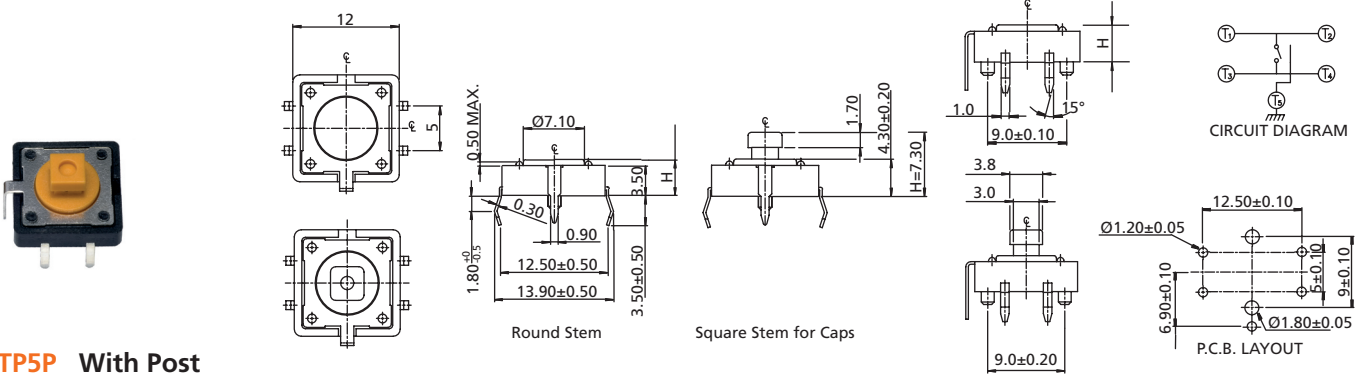
- » Wave Soldering: Recommended solder temperature at 260°C max. 5 seconds subject to PCB 1.6mm thickness (for THT).
- » Reflow Soldering: When applying reflow soldering, the peak temperature or the reflow oven should be set to 260°C max. 10 seconds (for SMT).

Tactile Switches

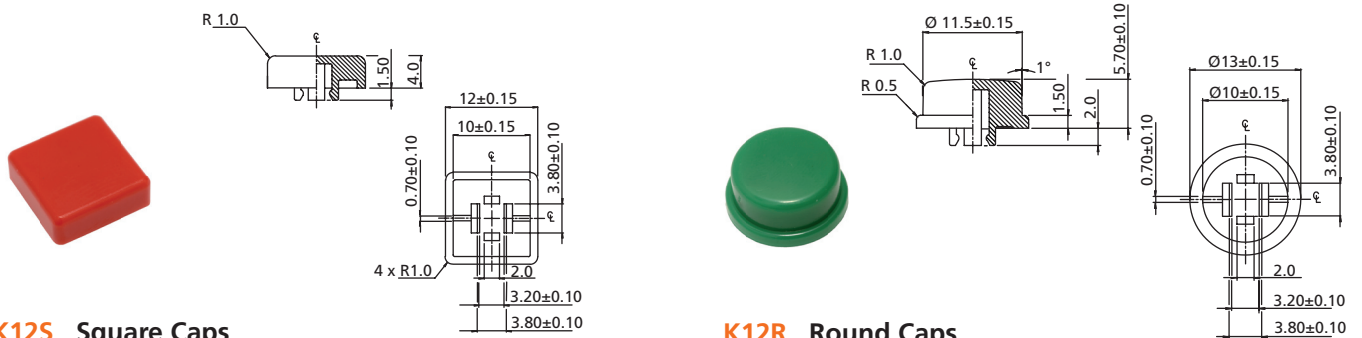
12 x 12 mm THT Tactile Switches with Ground Terminal TP5 Series



TP5N Without Post



TP5P With Post



K12S Square Caps

K12R Round Caps

How to order:

TP5 + (Caps)

- 1 TYPE OF TACTILE SWITCH:**
N With Ground Terminal, without Post (Standard)
P With Ground Terminal, with Post
- 2 Dimension H:**
1 H=4.3mm (Round Stem)
4 H=7.3mm (Square Stem 3.8mm)
5 H=8.5mm (Round Stem)
- 3 STEM COLOR & OPERATING FORCE:**
K Brown & 160±50gf
C Red & 260±50gf
J Salmon & 320±80gf
- 4 PACKAGE STYLE:**
BK Bulk Pack

- Optional:**
- 5 CAP TYPE (For Square Stems Only):**
K12S Square Caps
K12R Round Caps
- 6 COLOR OF CAPS:**
A Black
B Ivory
C Red
E Yellow
F Green
G Blue
H Gray
S Salmon

General Specifications:

MATERIALS

- » Contact Disc: Phosphor Bronze with silver cladding
- » Terminal: Brass with silver plated

MECHANICAL

- » Stroke: 0.35 ± 0.1 mm
- » Operation Temperature: -25°C to +70°C
- » Storage Temperature: -30°C to +80°C

ELECTRICAL

- » Electrical Life: 100,000 cycles for 320gf & 260gf
200,000 cycles for 160gf
- » Rating: 50mA, 12VDC
- » Contact Arrangement: 1 pole 1 throw

LEADFREE SOLDERING PROCESSES

- » Wave Soldering: Recommended solder temperature at 260°C max. 5 seconds subject to PCB 1.6mm thickness.