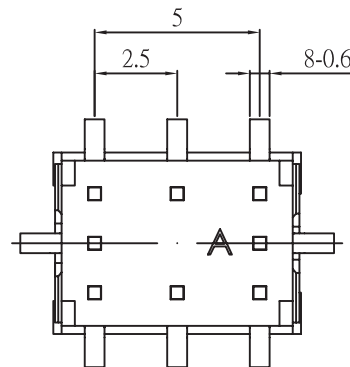
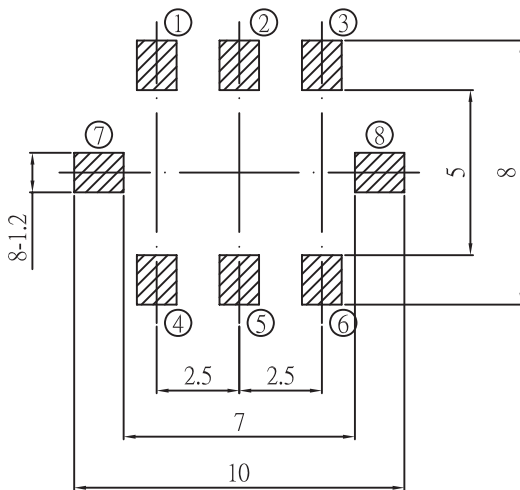
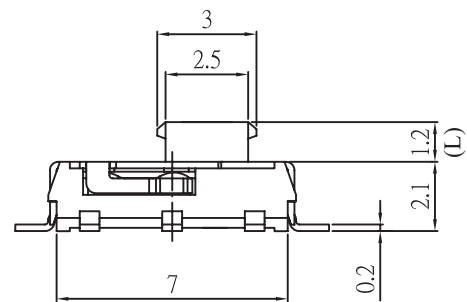
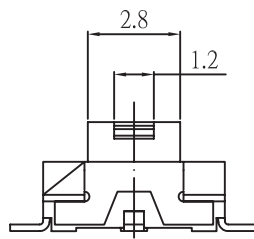
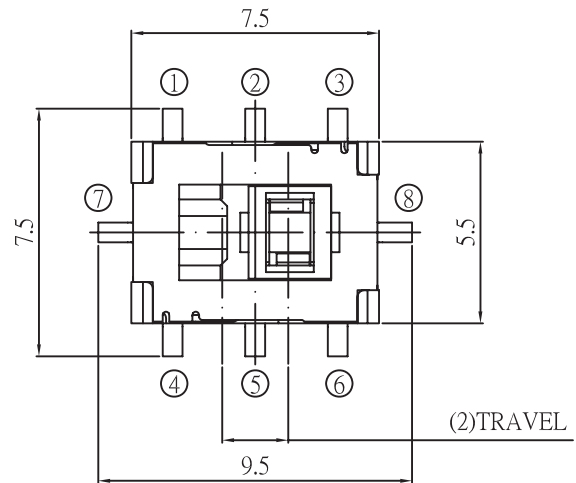
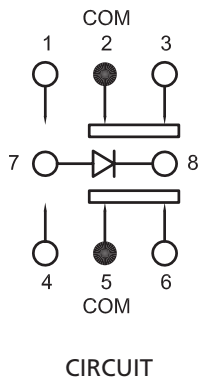


Slide Switches

SMT Slide Switches with LED Illumination

SB54 Series



| DIMENSION | TOLERANCE |
|--------------|-----------|
| BELOW 10 mm | ± 0.3 |
| 10-100 mm | ± 0.5 |
| ABOVE 100 mm | ± 0.8 |
| ANGLE | ± 3° |

How to order:

SB54

- | | | | |
|-------------------------------------|---------------------------------------|--|--|
| 1 TERMINATION: M SMT | 4 TIMING: N Non-Shorting | 7 ACTUATOR TYPE: S L = 1.2 mm (Standard) | 9 COLOR OF LED: N Without LED G Blue F Green C Red B White E Yellow |
| 2 POLE: D 2 Poles | 5 FRAME: S Standard Type | 8 BRIGHTNESS LED: N Without LED S Ultra Bright (Standard) | |
| 3 POSITION: 2 2 Positions | 6 ACTUATOR MATERIAL: 6 PA6T | | |

General Specifications:

- > Poles: 3P2T
- > Actuating: Slide Switch Momentary
- > Contact Rating: 0.3A 6VDC
- > Contact Resistance: 50 mohm Max.
- > Insulation Resistance: 100 Mohm Min. at 500VDC
- > Dielectric Strength: 500 VAC for 1 Minute
- > Operating Force: 200 gf
- > Operating Live: 10,000 Cycles
- > Operating Temperature: -20°C to +70°C
- > Total Travel: 2.0mm +/- 0.2mm