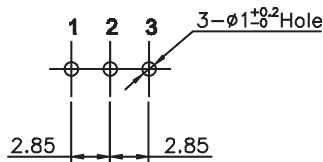
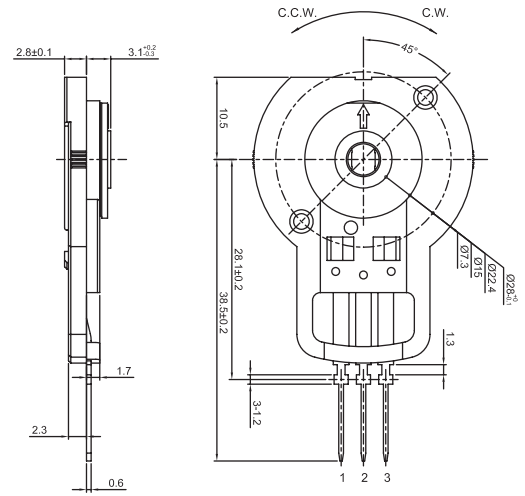
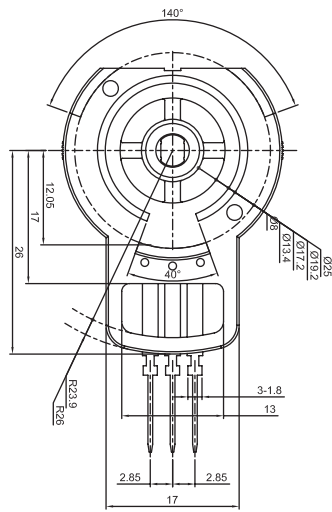


Rotary Position Sensor

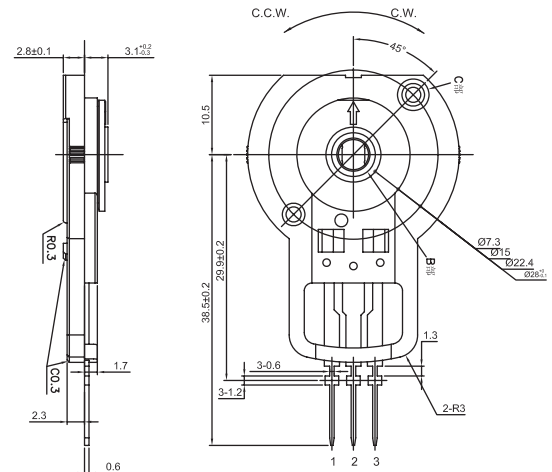
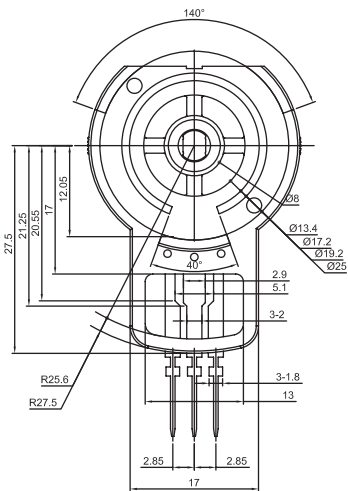
NE28 Series

DIMENSIONS (Unit: MM)

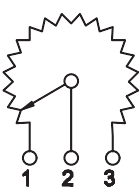


NE28AGB... Terminal Type A

P.C.B. LAYOUT



NE28BGB... Terminal Type B



SCHEMATIC

HOW TO ORDER

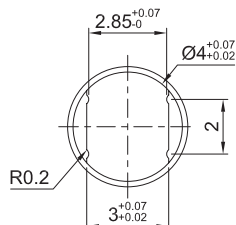
NE28

1 TERMINALS TYPE:

- A Type A (See drawing)
- B Type B (See drawing)

2 ROTOR TYPE

- G G Type (Hollow Shaft) Drawing:



3 RESISTANCE TAPER:

- B Linear

4 TOTAL RESISTANCE (TR):

- 1K 1KΩ
- 2K 2KΩ
- 4K7 4.7KΩ
- 5K 5KΩ
- 10K 10KΩ
- 20K 20KΩ
- 50K 50KΩ
- 100K 100KΩ

5 ELECTRICAL ANGLE:

- 120 120°
- 158 158°
- 160 160°
- 170 170°
- 180 180°
- 235 235°
- 250 250°

SPECIFICATIONS

ELECTRICAL CHARACTERISTICS:

- > Total Resistance Range: 1K to 100K Ω \pm 20%
- > Taper Style: B Taper linear
- > Power Rated: 0.1W
- > Independent Linearity: \pm 2%
- > Contact Noise: Within 10% TR
- > Rated Voltage: 5 \pm 0.5 VDC

MECHANICAL CHARACTERISTICS:

- > Effective Electrical Angle: 250 \pm 3 $^\circ$
- > Rotational Torque: 0 to 50 gf.cm
- > Push Pull Strength of Shaft: 1.0Kgf Min. for 10 Seconds Min.
- > Total Rotational Angle: 360 $^\circ$ (Endless)

ENVIRONMENTAL CHARACTERISTICS:

- > Storage Temperature: -40 $^\circ$ C to +85 $^\circ$ C
- > Operating Temperature: -40 $^\circ$ C to +85 $^\circ$ C
- > Life Cycles: 200,000 Cycles Min.
- > Heat Resistance: +85 $^\circ$ C \pm 3 $^\circ$ C, 168H \pm 4H, Δ TR: \pm 40%, Linearity: \pm 3%
- > Cold Resistance: -40 $^\circ$ C \pm 3 $^\circ$ C, 168H \pm 4H, Δ TR: \pm 40%, Linearity: \pm 3%
- > Humidity Resistance: +60 $^\circ$ C \pm 2 $^\circ$ C, 90 to 95 RH, 100H \pm 4H, Δ TR: \pm 40%, Linearity: \pm 3%
- > Temperature Cycles: -40 $^\circ$ C to +85 $^\circ$ C, 5 Cycles, Δ TR: \pm 40%, Linearity: \pm 3%