

# Pushbutton Switches

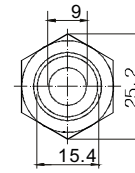
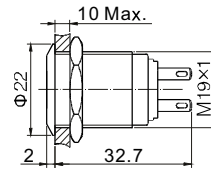
Anti-Vandal Pushbutton Switch - Mounting Hole Ø19mm

PAV19B Series

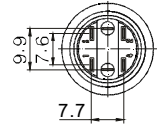


Terminal Type: Solder Lug 2x0.5mm  
Illumination: Dot Illuminated blue

PAV19B...FS1G...N



Top View

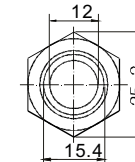
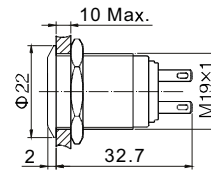


Terminal Arrangement

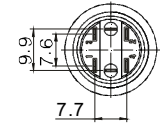


Terminal Type: Solder Lug 2x0.5mm  
Illumination: Ring Illuminated green

PAV19B...FS2F...N



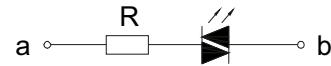
Top View



Terminal Arrangement

## LED SPECIFICATIONS

Lamp Type	LED Lamp AC/DC *			Lamp Circuit Diagram
Rated Voltage	AC/DC6V	AC/DC12V	AC/DC110V	
	AC/DC24V	AC/DC36V	AC/DC220V	
Rated Amper	about 15mA		about 3mA	
LED Colors	red, green, yellow, orange, blue, white			
Life	40,000 hours (reference)			

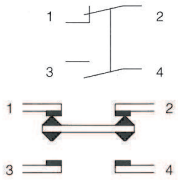


Using AC/DC LED lamp, the terminals have not difference of anode and cathode; Using inner resistance, don't need to connect outer resistance.

\* DC LED and other voltages can be made by request.

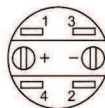
Terminal Description:

## SWITCHING



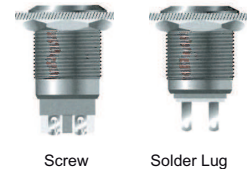
Using 4 terminals, double-break and fast-motion changeover contact.

## TERMINAL DESCRIPTION



1 & 2 are normally closed (NC)  
3 & 4 are normally opened (NO)  
+ & - are lamp terminals.  
The standard LED terminals have no difference of anode and cathode.  
The lamp and switch are relatively independent and can use switch or peripheral circuit to control the lamp state.

## INSTALLATION EFFECT



Screw

Solder Lug

## HOW TO ORDER:

PAV19B        -

### 1 OPERATING TYPE:

- M Momentary
- L Latching

### 2 FRONT SHAPE:

- F Flat Round
- PF Super Flat Head, Flat Button
- PH Super Flat Head, High Flat Button

### 3 TERMINATION:

- W Screw Terminal
- S Solder Lug

### 4 ILLUMINATION:

- 0 No Illumination
- 1 Dot Type Illumination
- 2 Ring Type Illumination

### 5 LED COLOR:

- N No Illumination
- C Red F Green E Yellow
- D Orange G Blue B White

### 6 LED VOLTAGE:

- 0 No Illumination
- 6 AC/DC 6V
- 12 AC/DC 12V
- 24 AC/DC 24V
- 110 AC/DC 110V
- 220 AC/DC 220V  
(Other Voltage can be made by request)

### 7 ENGRAVING:

- A Stop B Start C Return D Reset
  - E | F || G ◀ H ↑
  - J ■ K ⏻ L ⚡ M ⚙
  - N ○
- (Other engraving can be made by request)

### 8 (Optional) SPECIAL CODE \* :

- BA Black anodized

## SPECIFICATIONS:

### CHARACTERISTICS

- > Protection Degree: IP65 (IP67 made to order)
- > Anti Vandal Degree: IK09
- > Switch Rating: 5A 250VAC
- > Operation Type: Momentary/Latching
- > Contact Configuration: 1NO1NC
- > Contact Resistance: 50mΩ Max.
- > Insulation Resistance: 1000MΩ Min.
- > Dielectric Intensity: 2000VAC
- > Operating Temperature: -20°C to +55°C
- > Mechanical Life: 1,000,000 cycles
- > Electrical Life: 50,000 cycles
- > Panel Thickness: 1 to 10 mm
- > Torque: 5 to 14 Nm
- > Operation Pressure: about 4 N
- > Operation Travel: about 2.5mm
- > Switching: Double-Break Slow-Motion Contact

### MATERIALS

- > Contact: Silver alloy
- > Button: Stainless steel
- > Body: Stainless steel
- > Base: PC(by Solder Lug), PA(by Screw Terminal)

All specifications are restricted to QA test criteria.  
DRW: Z. ZHANG CHK: J. CHEN APP: D. GAO  
\* Revised 2011-09-26 UPD: 2017-06-06

# Pushbutton Switches

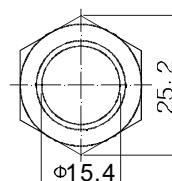
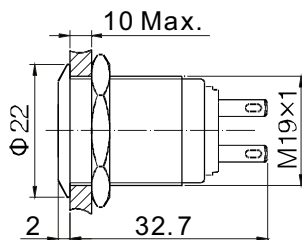
Anti-Vandal Pushbutton Switch - Mounting Hole  $\varnothing 19\text{mm}$

PAV19B Series

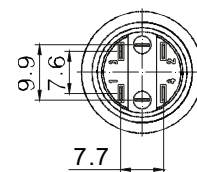


Terminal Type: Solder Lug  
Front Shape: Flat Round  
Illumination: No Illuminated

PAV19B...FS0N0N



Top View

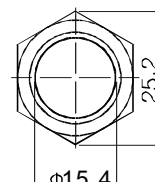
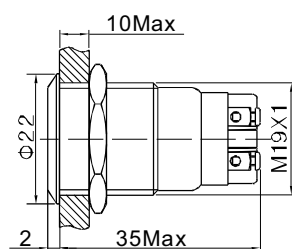


Terminal Arrangement

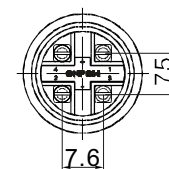


Terminal Type: Screw Terminal  
Front Shape: Flat Round  
Illumination: No Illuminated

PAV19B...FW0N0N



Top View

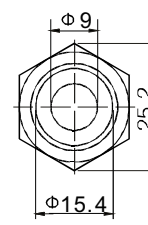
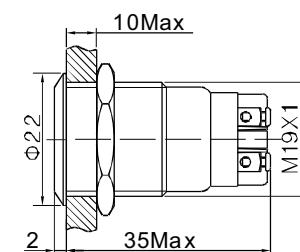


Terminal Arrangement

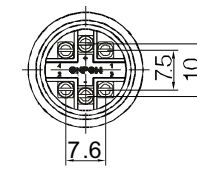


Terminal Type: Screw Terminal  
Front Shape: Flat Round  
Illumination: Dot Illuminated

PAV19B...FW1F...N



Top View

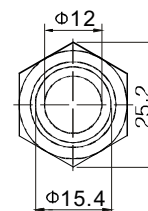
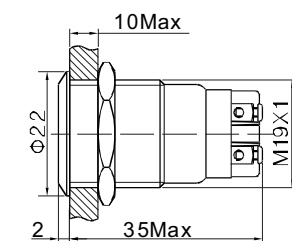


Terminal Arrangement

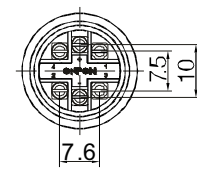


Terminal Type: Screw Terminal  
Front Shape: Flat Round  
Illumination: Ring Illuminated

PAV19B...FW2G...N



Top View

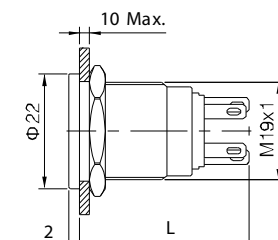


Terminal Arrangement

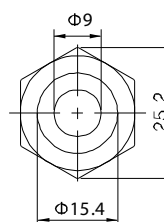


Terminal Type: Screw Terminal  
Front Shape: Super Flat  
Illumination: Dot Illuminated

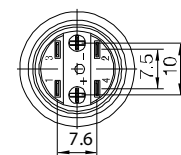
PAV19B...PFS1F...N



L: Momentary is 32.6;  
Latching is 39.



Top View

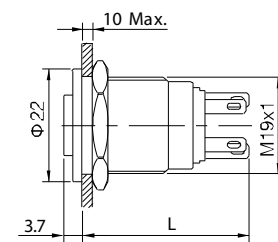


Terminal Arrangement

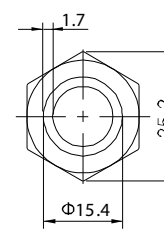


Terminal Type: Screw Terminal  
Front Shape: Super Flat High  
Illumination: Ring Illuminated

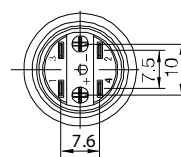
PAV19B...PHS2G...N



L: Momentary is 32.6;  
Latching is 39.



Top View



Terminal Arrangement