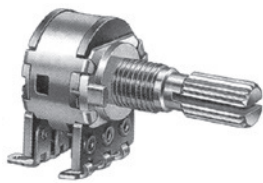


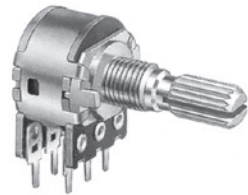
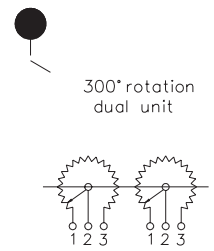
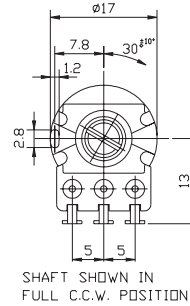
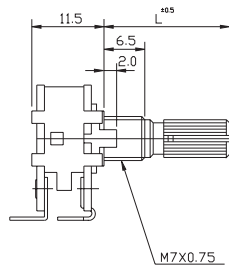
# Potentiometers

## 16mm Size Metal Shaft DP Rotary Potentiometers

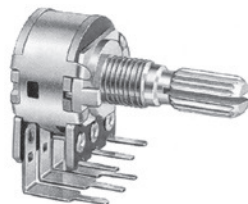
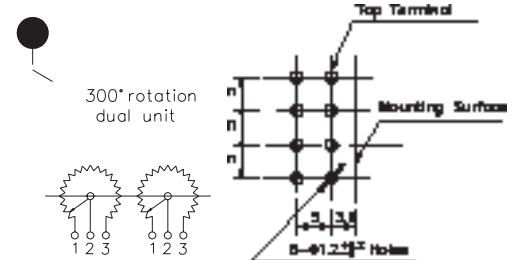
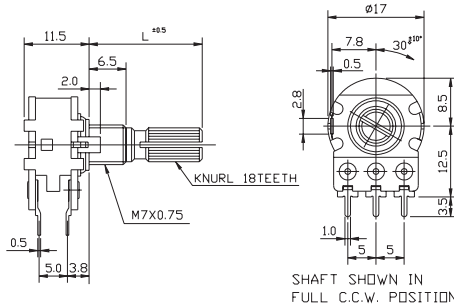
## GPV16B Series



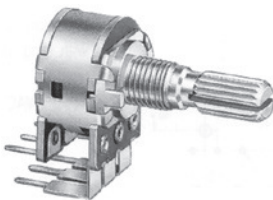
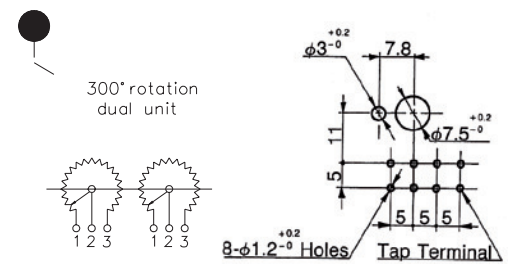
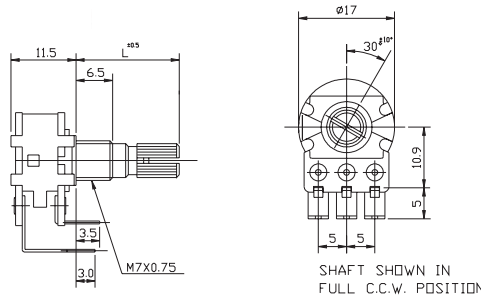
**PV16B10B6**  
Solder Lug



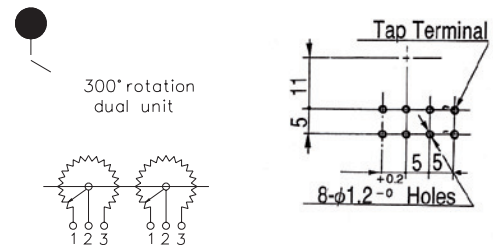
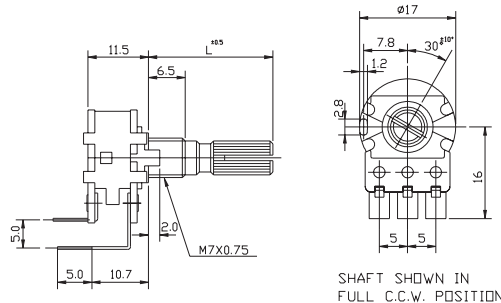
**PV16B20**  
PC Board Horizontal



**PV16B30**  
PC Board Vertical Front



**PV16B41**  
PC Board Vertical Back



### How to order:

GPV16B         ...

- |   |  |
|---|--|
| <b>1</b> TYPE OF TERMINALS:                   | <b>7</b> RESISTANCE VALUE (OHM)                                      |
| 10 Solder Lug                                 | 5K 10K 20K 50K 100K  |
| 20 PC Board Horizontal                        | 200K 500K 1M   |
| 30 PC Board Vertical Front                    | <b>8</b> NUMBER OF CLICK   |
| 40 PC Board Vertical Back                     | N None Click   |
| <b>2</b> TYPE OF BUSHING:                     | C Center Click   |
| N Standard                                    | 11 11 Positions Click  |
| <b>3</b> LENGTH OF SHAFT (mm):                | 21 21 Positions Click  |
| 15 20 25 30                                   | 41 41 Positions Click  |
| <b>4</b> TYPE OF SHAFT(see support page):     | <b>SPECIAL REQUESTS:</b>   |
| K K-Type                                      | <b>PATTERN OF RESISTANCE CURVE</b>                                   |
| S S-Type                                      | ... (Texts)  |
| R R-Type                                      | <b>MATERIALS &amp; METHODS FOR MANUFACTURING SHAFT &amp; BUSHING</b> |
| F F-Type                                      | ... (Texts)  |
| <b>5</b> AXIS ANGLE OF F-SHAFT:               |  |
| -- °  |  |
| <b>6</b> RESISTANCE TAPER (see support page): |  |
| ... (Texts)                                   |  |

### General Specifications:

#### MECHANICAL:

- » Total Rotation Angle: 300°± 5°
- » Rotation Torque: 20-200 gf.cm
- » Shaft Stop Strength: 6Kgf.cm/Max.
- » Click Torque: 100-400 gf.cm
- » Pull-Push Strength: 100N Max.

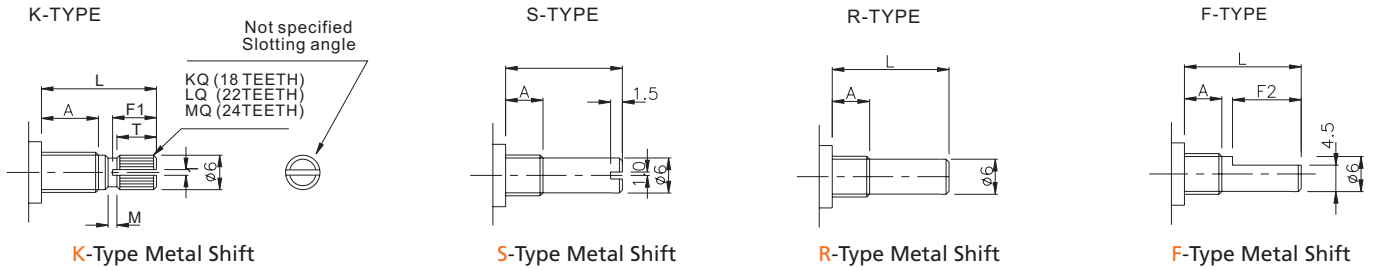
#### ELECTRICAL:

- » Rated Wattage: 0.125W for linear taper B  
0.06W for other tapers
- » Rated Voltage: 200V for linear taper B  
150V for other tapers
- » Insulation Resistance: More than 100MΩ at DC500V

# Potentiometers

## Additional Informations for GPV16A & GPV16B Series

### METAL SHIFT



K-Type Metal Shift

S-Type Metal Shift

R-Type Metal Shift

F-Type Metal Shift

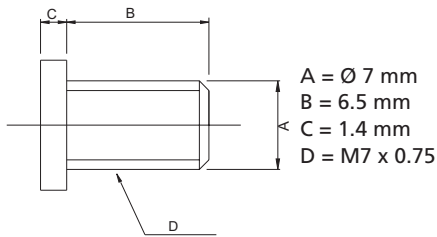
A: 5 mm

Shaft Type	L	15	20	25	30
K	F1	6.5	11	14	14
	T	6	10	12	12
	M	1	2	4	4
F	F2	7	12	14	14
R, S	L	15	20	25	30

A: 6.5 mm

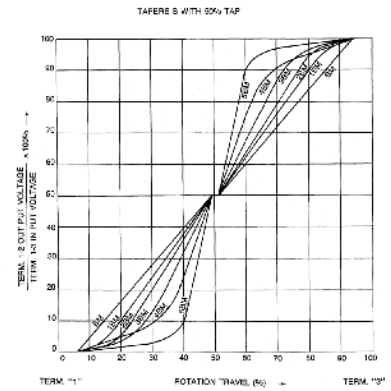
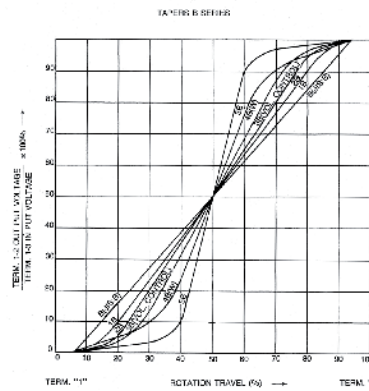
Shaft Type	L	15	20	25	30
K	F1	6.5	11	14	14
	T	6	10	12	12
	M	1	2	4	4
F	F2	7	12	14	14
R, S	L	15	20	25	30

### NUT (M7x0.75)

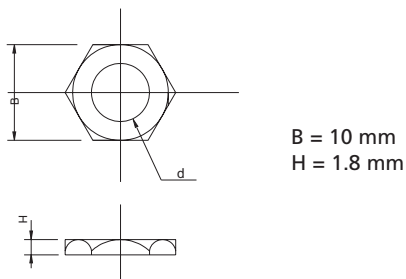


A = 7 mm  
B = 6.5 mm  
C = 1.4 mm  
D = M7 x 0.75

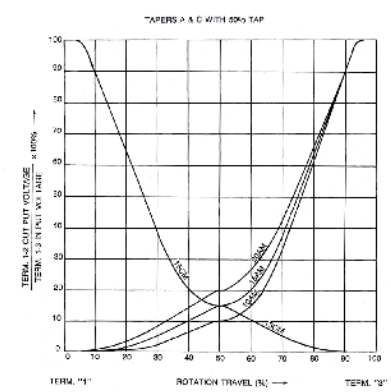
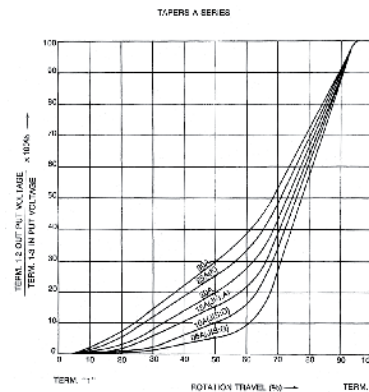
### STANDARD RESISTANCE TAPER



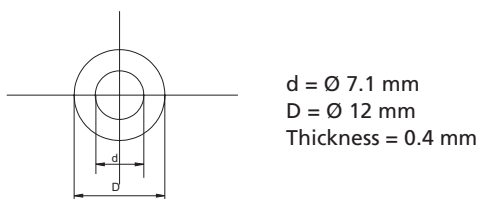
### NUT (M7x0.75)



B = 10 mm  
H = 1.8 mm



### WASHER (M7)



d = 7.1 mm  
D = 12 mm  
Thickness = 0.4 mm

