

Detector Switches

Uplift Vertical Type Detector Switches

DF65 Series

General Specifications



MATERIALS

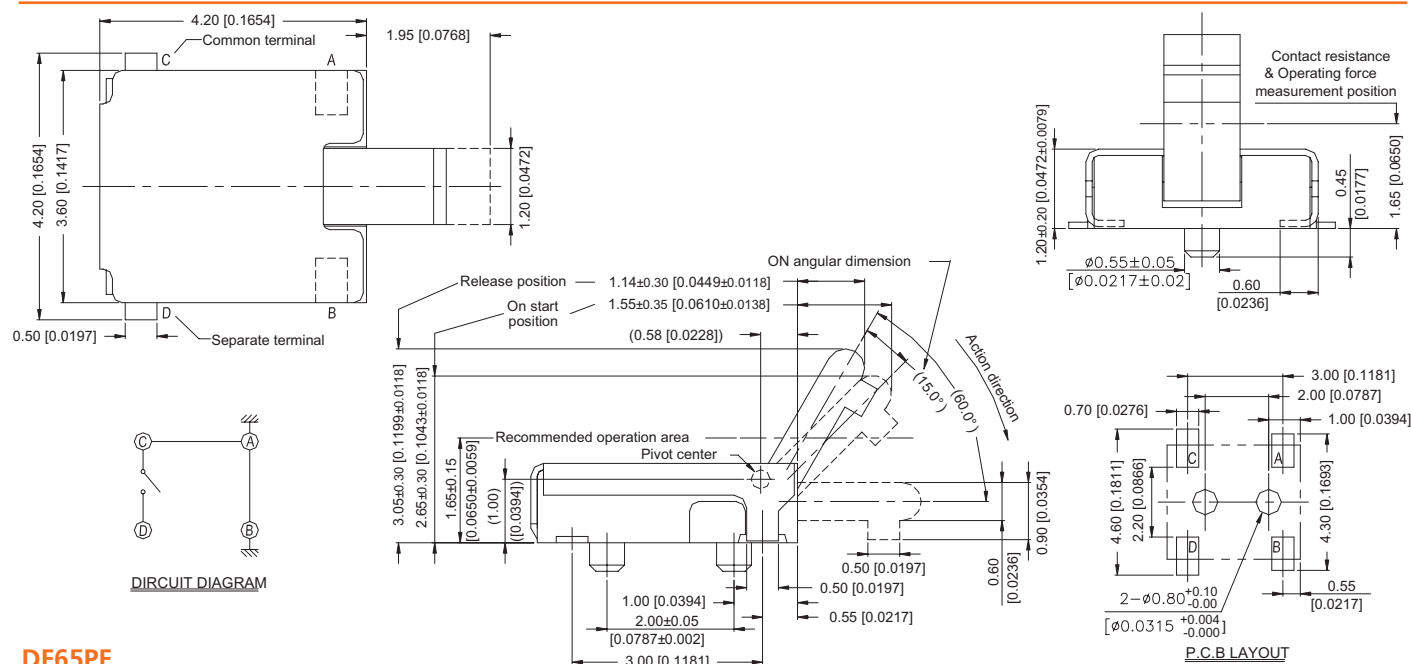
- » Cover : Nickel Silver
- » Contact : Alloy Copper , gold plated
- » Terminal : Brass , gold plated
- » Base : UL94V-0 PA9T High-Temp Thermoplastic black
- » Stem : UL94V-0 PA9T High-Temp Thermoplastic black
- » Contact Arrangement: 1pole 1throw
- » Silicone : Silicone black

MECHANICAL

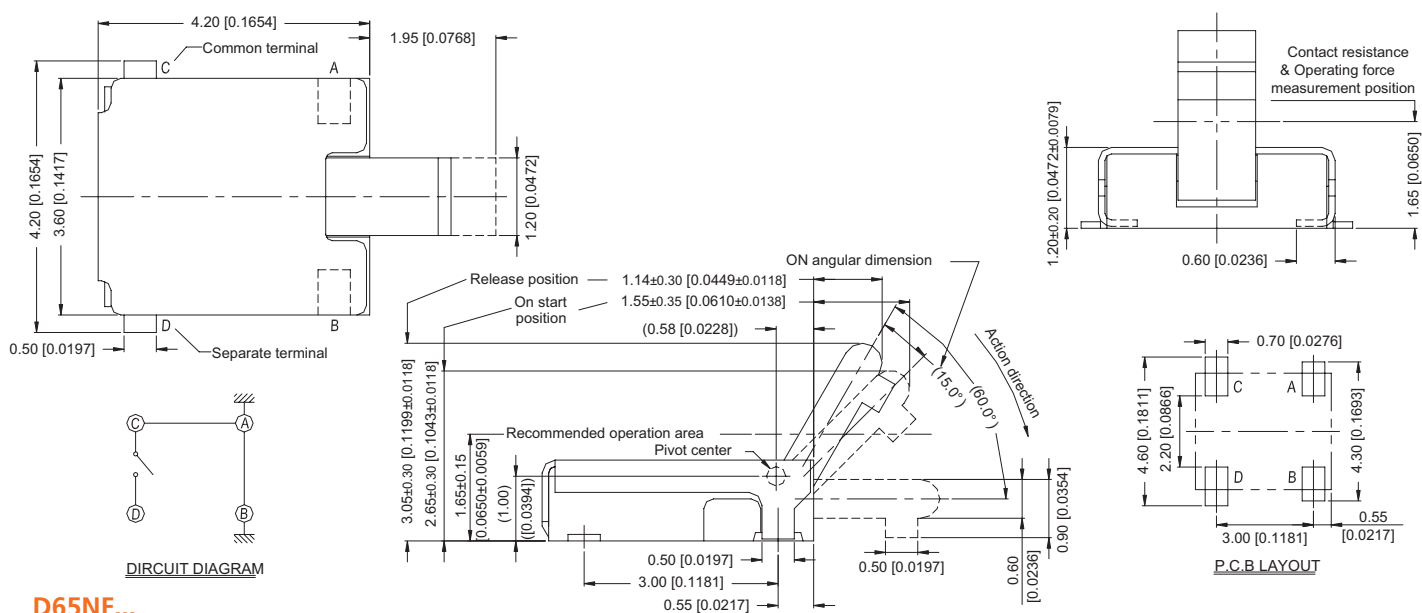
- » Mechanical Life: 50,000 operations
- » Operation Force: 40gf max.
- » Operation Temperature : -10°C to +60°C
- » Storage Temperature : -20°C to +70°C

ELECTRICAL

- » Electrical Life : 50,000 cycles
- » Rating : 50 mA 3 V DC to 10 mA 5 V DC
- » Dielectric Strength : 100 VAC / 1 minute.
- » Contact Resistance : 1Ω Max.
- » Insulation Resistance : 100 MΩ Min. 100V DC



DF65PF...



D65NF...

How to order:

DF65 1 2 3

1 POST:

- N Without Post
- P With Post

2 TERMINALS:

- F Flat Terminal
- L Bending Terminal

3 PACKAGE STYLE:

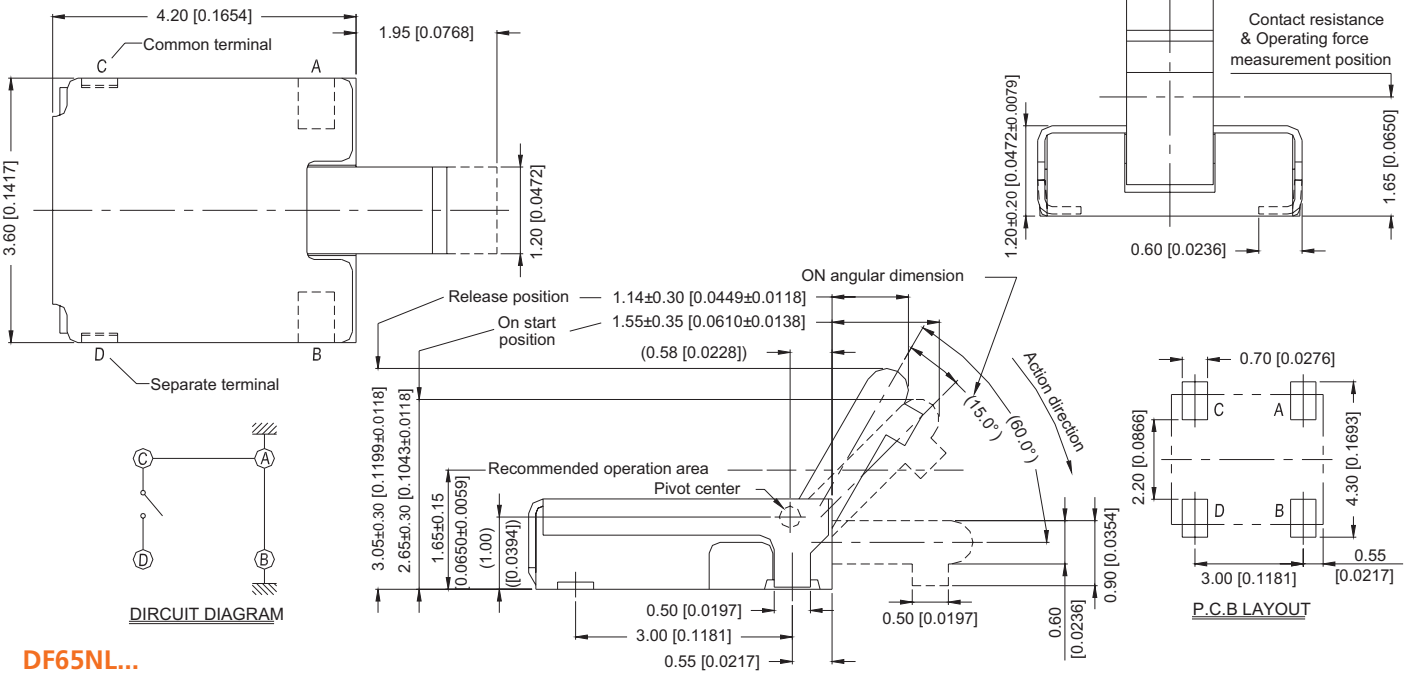
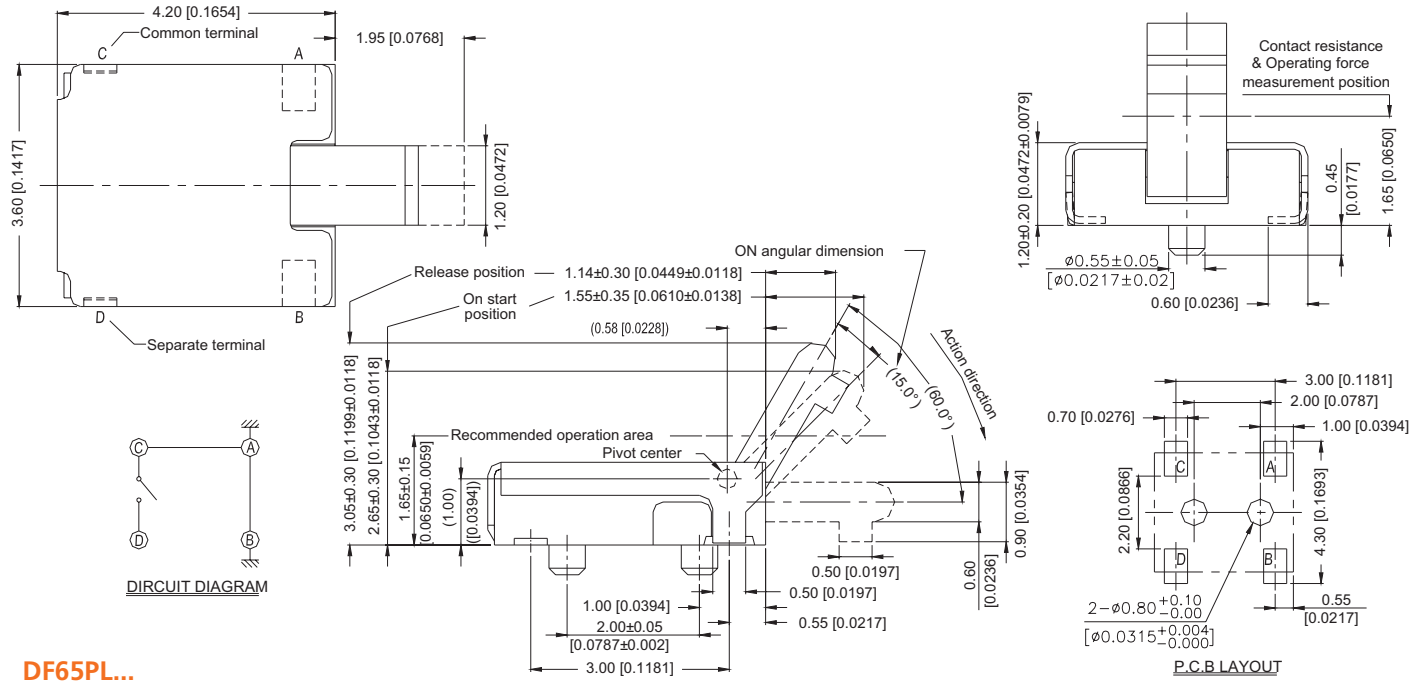
- TR Tape & Reel

General Tolerance:±0.2mm

Detector Switches

Uplift Vertical Type Detector Switches

DF65 Series

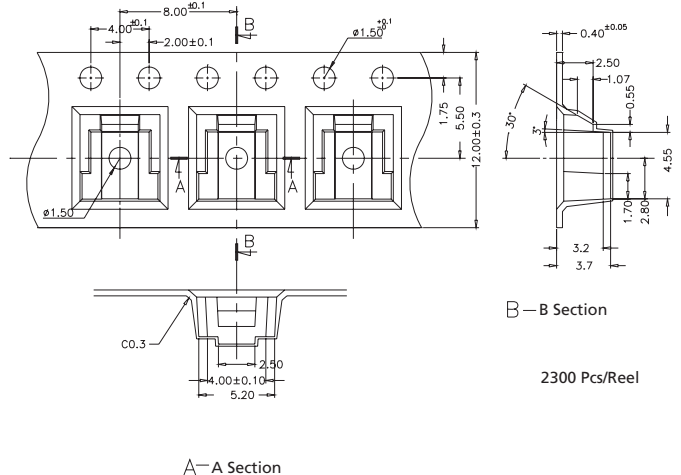
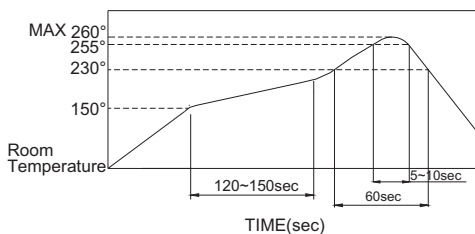


LEADFREE SOLDERING PROCESSES

TAPE & REEL PACKING

- » Hand Soldering : Use a soldering iron of 30 watts, controlled at 350°C approximately Max. 5 seconds while applying.
- » Reflow Soldering: When applying reflow soldering, the peak temperature or the reflow oven should be set to 260°C max.

Reflow Temperature Profile:



General Tolerance: $\pm 0.2\text{mm}$