

# Detector Switches

## Horizontal Type Detector Switches

## DF55 Series

### General Specifications



#### MATERIALS

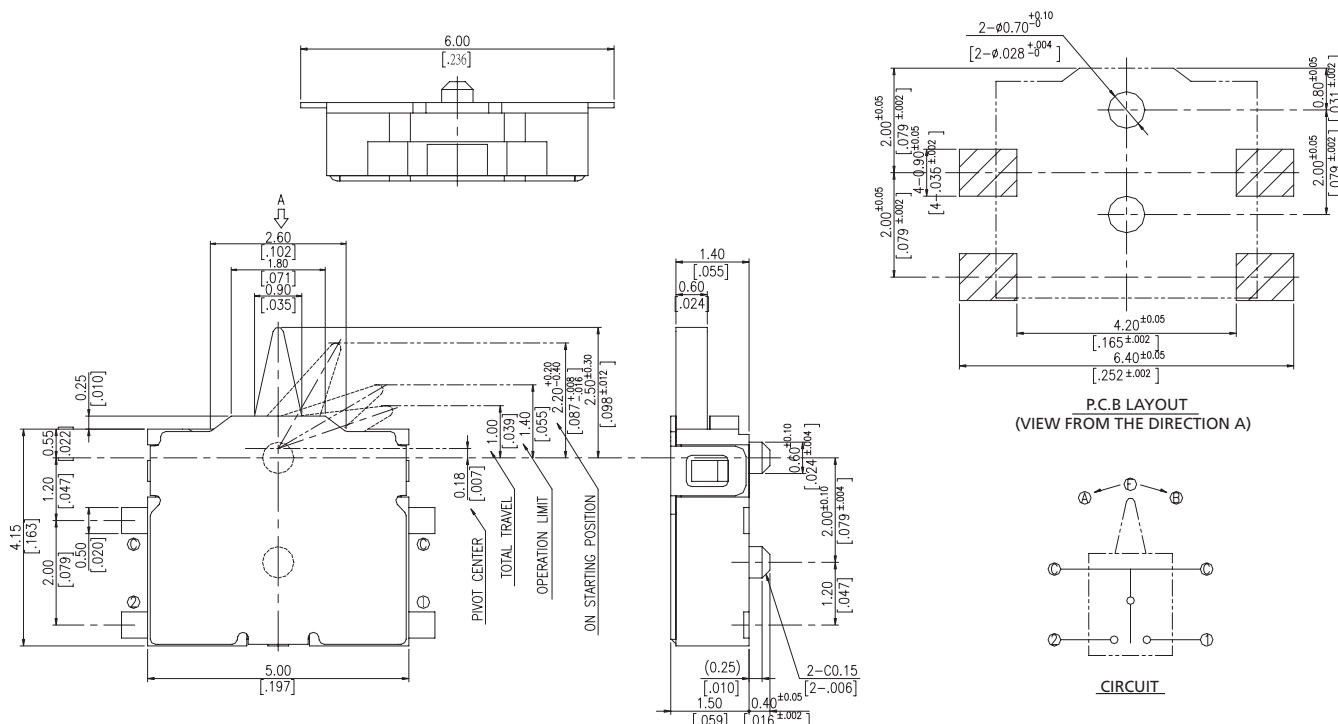
- » Cover: Stainless Steel
- » Contact: Phosphor bronze with silver plated
- » Terminal: Phosphor bronze with silver plated
- » Base: UL 94V-0 Nylon High-Temp. Thermoplastic black
- » Stem: UL 94V-0 LCP High-Temp. Thermoplastic black
- » Slide: UL 94V-0 Nylon High-Temp. Thermoplastic black
- » Spring: Stainless Steel

#### MECHANICAL

- » Operation Force: 30gf max.
- » Stroke:  $1.5 \pm 0.3$  mm
- » Operation Temperature:  $-10^{\circ}\text{C}$  to  $+60^{\circ}\text{C}$
- » Storage Temperature:  $-20^{\circ}\text{C}$  to  $+70^{\circ}\text{C}$

#### ELECTRICAL

- » Electrical Life: 100,000 cycles
- » Rating: 10mA, 5VDC
- » Contact Arrangement: 1 pole 1 throw
- » Dielectric Strength: 100 VAC / 1 minute.
- » Contact Resistance : 500m $\Omega$  Max.
- » Insulation Resistance : 100 M $\Omega$  Min.

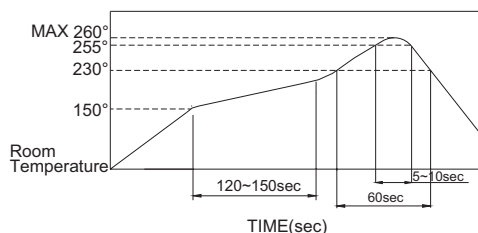


### DF55P

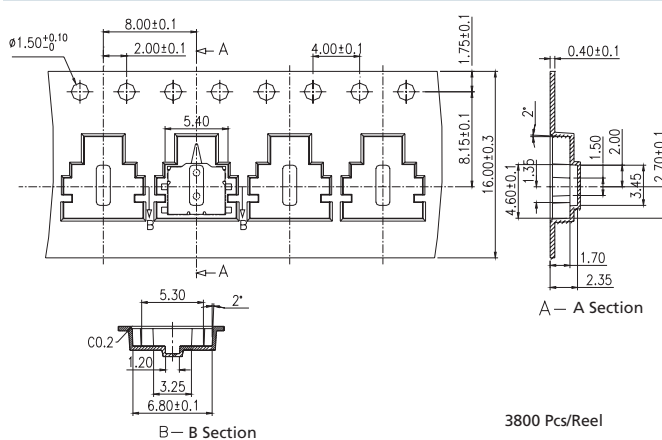
#### LEADFREE SOLDERING PROCESSES

- » Hand Soldering : Use a soldering iron of 30 watts, controlled at  $320^{\circ}\text{C}$  approximately 2 seconds while applying.
- » Wave Soldering : Recommended solder temperature at  $260^{\circ}\text{C}$  max. 5 seconds for through hole type.
- » Reflow Soldering : When applying reflow soldering, the peak temperature or the reflow oven should be set to  $260^{\circ}\text{C}$  max.
- » Make sure that there is no flux rise on the surface of the PCB.

Reflow Temperature Profile:



#### TAPE & REEL PACKING



### How to order:

DF55 1 2

**1 POST:**

**P** Base With Post

**2 PACKAGE STYLE:**

**TR** Tape & Reel

General Tolerance:  $\pm 0.2$ mm