

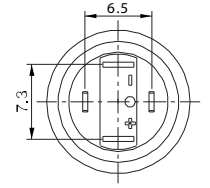
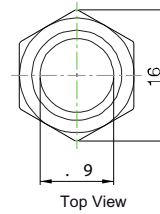
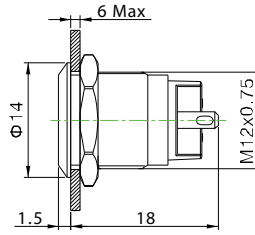
# Pushbutton Switches

Anti-Vandal Pushbutton Switch - Mounting Hole Ø12mm

PAV12 Series



Terminal Type: Solder Lug 2x0.5mm  
Front Shape: Flat Round  
Illumination: No Illumination



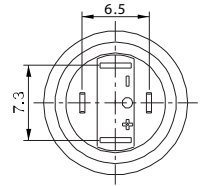
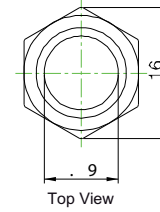
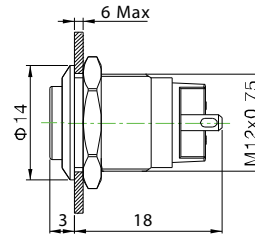
Top View

Terminal Arrangement

PAV12NFS0N0N



Terminal Type: Solder Lug 2x0.5mm  
Front Shape: High Round  
Illumination: No Illumination



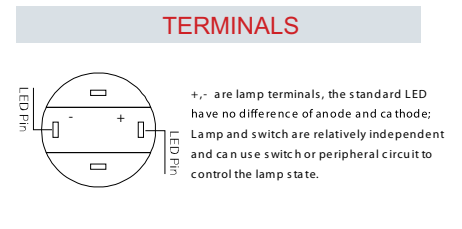
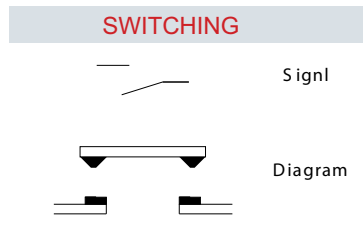
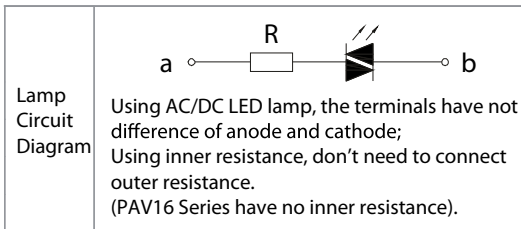
Top View

Terminal Arrangement

PAV12NH50N0N

## LED SPECIFICATIONS

Lamp parameter	Lamp Type	Dot/Ring (LED)			
	Lamp Color	R Y O		G B W	
	Rated Voltage Ue	AC/DC 1.8V		AC/DC 2.8V	
	Rated Current Ie	15mA			
	Life	40000 hours			
resistor configuration (Recommended value)	Voltage U	6V	12V	24V	36V
	Current Limiting Resistance R	R Y O 270 ,1/4W	820 ,1/2W	1.5K ,1W	2.7K ,1W
		G B W 220 ,1/4W	680 ,1/2W	1.5K ,1W	2.7K ,1W



## How to order:

PAV12

### 1 SWITCHING CIRCUIT:

N 1NO (Standard)

### 2 FRONT SHAPE:

F Flat Round  
H High Round

### 3 TERMINATION:

S Solder Lug

### 4 ILLUMINATION:

0 No Illumination  
1 Dot Type Illumination  
2 Ring Type Illumination  
3 Power Symbol

### 5 LED COLOR:

N No Illumination  
C Red  
D Orange  
F Green  
G Blue  
E Yellow  
B White

### 6 LED VOLTAGE:

0 No Illumination / No Resistance  
6 AC/DC 6V  
12 AC/DC 12V  
24 AC/DC 24V  
110 AC/DC 110V  
220 AC/DC 220V  
(Other Voltage can be made by request)

### 7 ENGRAVING:

A Stop B Start C Return D Reset

E | F || G ◀ H ↑

J ■ K ⏻ L ⚡ M ⏪

N ○  
(Other engraving can be made by request)

### 8 MATERIAL:

blank Stainless Steel  
A Aluminium Alloy (Black)

## General Specifications:

### CHARACTERISTICS

- > Protection Degree: IP65
- > Anti Vandal Degree: IK08
- > Switch Rating: 2A 36VDC
- > Operation Type: Momentary
- > Contact Configuration: 1NO
- > Contact Resistance: 50mΩ Max.
- > Insulation Resistance: 1000MΩ Min.
- > Dielectric Intensity: 1500VAC
- > Operating Temperature: -20°C to +55°C
- > Mechanical Life: 500,000 cycles
- > Electrical Life: 200,000 cycles
- > Panel Thickness: 1 to 6 mm
- > Torque: about 0.6 Nm
- > Operation Pressure: 2.5 to 4 N
- > Operation Travel: about 1.5mm
- > Switching: Double-Break Slow-Motion Contact

### MATERIAL

- > Contact: Silver alloy
- > Button: Stainless steel / Aluminium Alloy
- > Body: Stainless steel / Aluminium Alloy
- > Base: PA

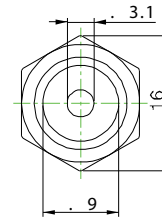
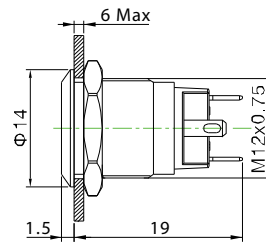
# Pushbutton Switches

Anti-Vandal Pushbutton Switch - Mounting Hole  $\varnothing 12\text{mm}$

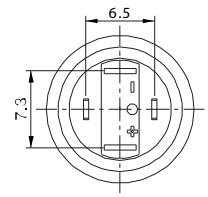
PAV12 Series



Terminal Type: Solder Lug  
Front Shape: Flat Round  
Illumination: Dot Illuminated Red



Top View

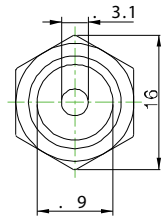
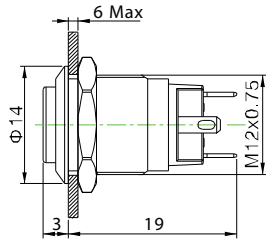


Terminal Arrangement

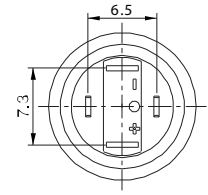
PAV12NFS1C\_N



Terminal Type: Solder Lug  
Front Shape: High Round  
Illumination: Dot Illuminated Green



Top View

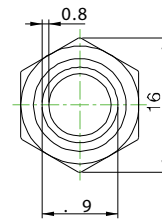
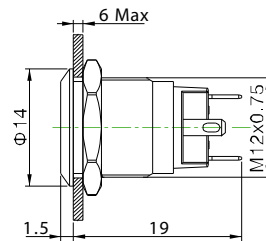


Terminal Arrangement

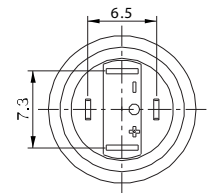
PAV12NHS1F\_N



Terminal Type: Solder Lug  
Front Shape: Flat Round  
Illumination: Ring Illuminated Green



Top View

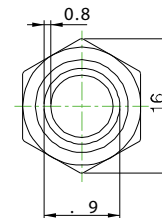
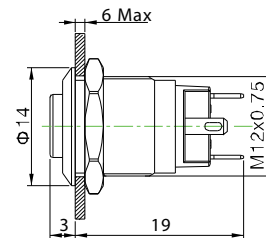


Terminal Arrangement

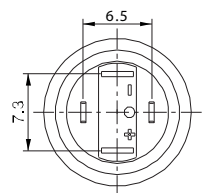
PAV12NFS2F\_N



Terminal Type: Solder Lug  
Front Shape: High Round  
Illumination: Ring Illuminated Blue



Top View

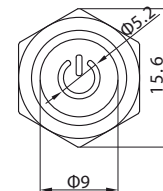
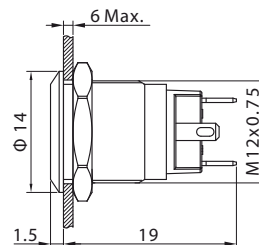


Terminal Arrangement

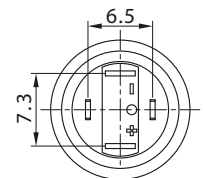
PAV12NHS2G\_N



Terminal Type: Solder Lug  
Front Shape: Flat Round  
Illumination: Power Symbol Illuminated



Top View



PAV12NFS3\_K