

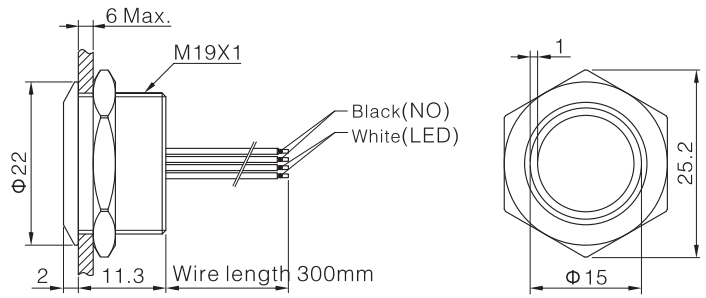
Pushbutton Switches

Micro Travel Anti-Vandal Pushbutton Switch - Mounting Hole \varnothing 19mm **PAV19M** Series



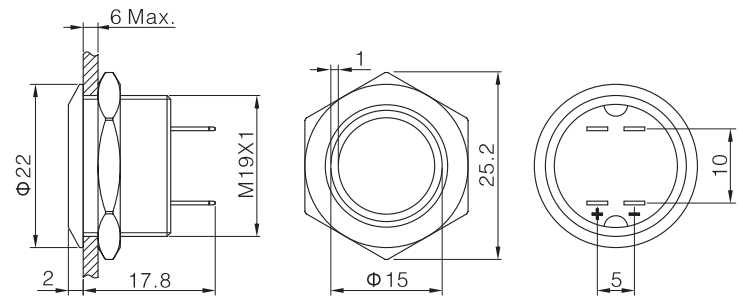
Terminal Type: 24AWG Wire Leading
Illumination: Ring Illuminated Red

PAV19MFW2C_N



Terminal Type: Solder Lug 2.8x0.5mm
Illumination: Ring Illuminated Blue

PAV19MFS2G_N



LED SPECIFICATIONS

Lamp Type	LED Lamp AC/DC *			Lamp Circuit Diagram
Rated Voltage	AC/DC6V	AC/DC12V	AC/DC110V	
	AC/DC24V	AC/DC36V	AC/DC220V	
Rated Amper	about 15mA		about 3mA	
LED Colors	red, green, yellow, orange, blue, white			
Life	40,000 hours (reference)			

Using AC/DC LED lamp, the terminals have not difference of anode and cathode; Using inner resistance, don't need to connect outer resistance.

* DC LED and other voltages can be made by request.

How to order:

PAV19M

1 OPERATING TYPE:

M Momentary

2 FRONT SHAPE:

F Flat Round

3 TERMINATION:

W Wire Leading 300mm (standard)
S Solder Lug (made by request)

4 ILLUMINATION:

2 Ring Type Illumination

5 LED COLOR:

C Red
F Green
E Yellow
G Blue
B White

6 LED VOLTAGE:

6 AC/DC 6V
12 AC/DC 12V
24 AC/DC 24V
(Other Voltage can be made by request)

7 ENGRAVING:

A Stop B Start C Return D Reset
E I F II G Left Arrow H Up Arrow
J Square K Power L Light Bulb M Bell
(Other engraving can be made by request)

General Specifications:

CHARACTERISTICS

- > Protection Degree: IP65 (IP67 made to order)
- > Anti Vandal Degree: IK05
- > Switch Rating: 50mA 24VDC
- > Operation Type: Momentary
- > Contact Configuration: 1NO
- > Contact Resistance: 100m Ω Max.
- > Insulation Resistance: 1000M Ω Min.
- > Operating Temperature: -20°C to +55°C
- > Mechanical Life: 500,000 cycles
- > Electrical Life: 500,000 cycles
- > Panel Thickness: 1 to 6mm
- > Torque: about 0.6Nm
- > Operation Pressure: about 7.8N
- > Operation Travel: 0.5mm
- > Switching: Single-Break Contact

MATERIALS

- > Contact: Silver alloy
- > Button: Stainless steel
- > Body: Stainless steel
- > Base: PBT