

Pushbutton Switches

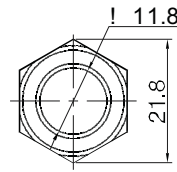
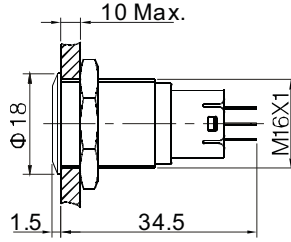
Anti-Vandal Pushbutton Switch - Mounting Hole Ø16mm

PAV16B Series

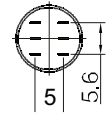


Front Shape: Flat Round
Illumination: No Illumination

PAV16B_F_0N0N



Top View

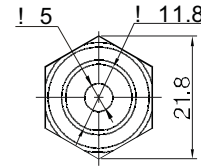
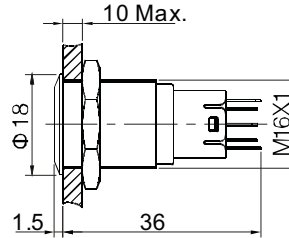


Terminal Arrangement

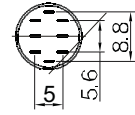


Front Shape: Flat Round
Illumination: Dot Illumination

PAV16B_F_1F_N



Top View



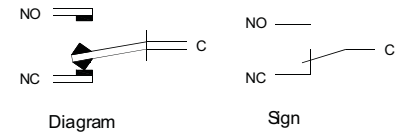
Terminal Arrangement

LED SPECIFICATIONS

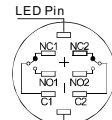
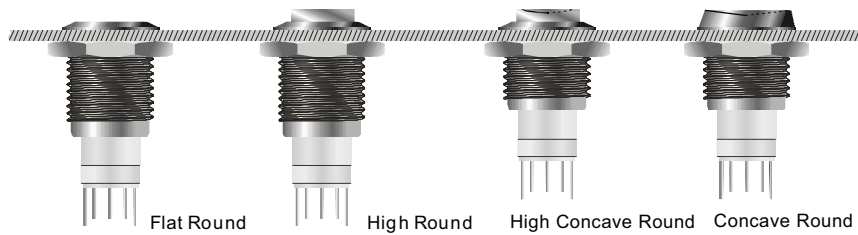
Lamp Type	LED lamp (AC/DC)			<p>Lamp Circuit Diagram</p> <ul style="list-style-type: none"> Using AC/DC LED lamp, the terminals have no difference of anode and cathode. Using inner resistance for the lamp below 60V. Using 6V lamp when the lamp voltage is above 60V, and need connect outer dropping resistance.
LED Color	Red, Green, Yellow, Orange, Blue, White			
Life	40000 hours (Reference)			
Rated Voltage	AC/DC6V	AC/DC12V	AC/DC110V	
	AC/DC24V	AC/DC36V	AC/DC220V	
Rated Current	About 15mA		About 3mA	
Dropping Way	Inner resistance		Outer resistance when using 6V lamp	

DC LED and other voltage can be made to order.

SWITCHING



TERMINALS



Can use two sets at most.
C1, NO1, NC1 and C2, NO2, NC2 are one set respectively.
C is common used, NO is normal opened, NC is normal closed;
+ - are lamp terminals, the standard LED have no difference of anode and cathode;
The lamp and switch are relatively independent and can use switch or peripheral circuit to control the lamp state.

How to order:

PAV16B

1 SWITCHING CIRCUIT:

- 1 1NO1NC
- 2 2NO2NC

2 FRONT SHAPE:

- F Flat Round
- H High Round
- FC Concave Round
- HC High Concave Round
- PF Super Flat Head, Flat Button
- PH Super Flat Head, High Flat Button

3 OPERATING TYPE:

- M Momentary
- L Latching

4 ILLUMINATION:

- 0 No Illumination
- 1 Dot Type Illumination
- 2 Ring Type Illumination

5 LED COLOR:

- (Option Head Color for High Concave Round Type)
- N No Illumination
 - C Red F Green E Yellow
 - D Orange G Blue B White

6 LED VOLTAGE:

- 0 No Illumination
 - 6 AC/DC 6V
 - 12 AC/DC 12V
 - 24 AC/DC 24V
 - 110 AC/DC 110V
 - 220 AC/DC 220V
- (Other Voltage can be made by request)

7 ENGRAVING:

- A Stop
 - B Start
 - C Return
 - D Reset
 - E Vertical bar
 - F Double vertical bar
 - G Left arrow
 - H Up arrow
 - J Square
 - K Power
 - L Lightbulb
 - M Bell
 - N Circle
- (Other engraving can be made by request)

8 MATERIAL:

- blank Stainless Steel
- N Nickel-Plated Brass
- A Aluminium Alloy (Black)

9 IP DEGREE:

- blank IP40
- W IP67

General Specifications:

CHARACTERISTICS

- > Protection Degree: IP40 / IP67
- > Anti Vandal Degree: IK09 / IK10
- > Switch Rating: 3A 250VAC
- > Operation Type: Momentary / Latching
- > Contact Resistance: 50mOhms Max.
- > Insulation Resistance: 1000MOhms Min.
- > Dielectric Intensity: 2000VAC
- > Operating Temperature: -20°C to +55°C
- > Mechanical Life: 200,000 cycles
- > Electrical Life: 50,000 cycles
- > Panel Thickness: 1 to 10 mm
- > Torque: 5 to 14 Nm
- > Operation Pressure: 2.5 to 4 N
- > Operation Travel: about 2.8mm
- > Switching: Single-Break Fast-Motion Contact

MATERIALS

- > Contact: Silver alloy
- > Button: Stainless steel(Nickel Plated)
- > Body: Stainless steel(Nickel Plated)
- > Base: PBT

Pushbutton Switches

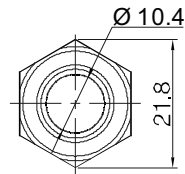
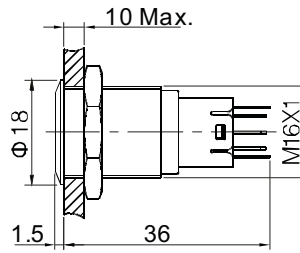
Anti-Vandal Pushbutton Switch - Mounting Hole $\text{\O}16\text{mm}$

PAV16B Series

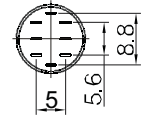


Front Shape: Flat Round
Illumination: Ring Illumination

PAV16B_F_2G_N



Top View

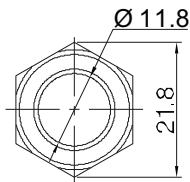
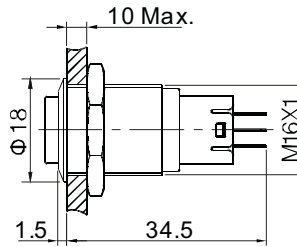


Terminal Arrangement

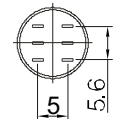


Front Shape: High Round
Illumination: No Illumination

PAV16B_H_0N0N



Top View

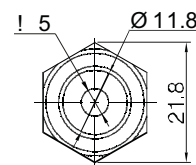
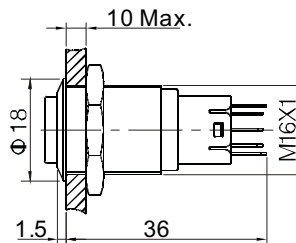


Terminal Arrangement

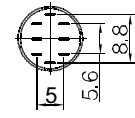


Front Shape: High Round
Illumination: Dot Illumination

PAV16B_H_1G_N



Top View

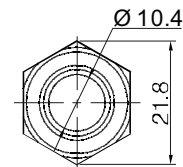
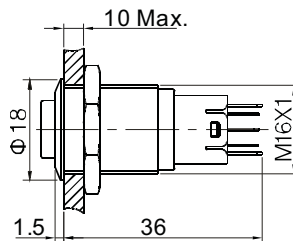


Terminal Arrangement

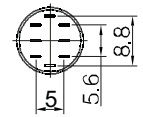


Front Shape: High Round
Illumination: Ring Illumination

PAV16B_H_2C_N



Top View

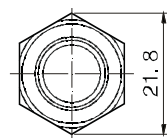
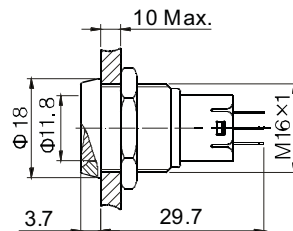


Terminal Arrangement

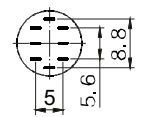


Front Shape: Concave Round
Illumination: No Illumination

PAV16B_FC_0N_N



Top View

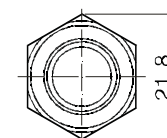
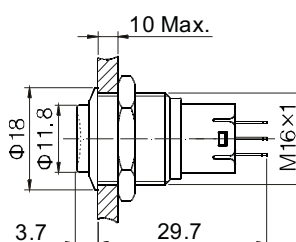


Terminal Arrangement

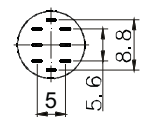


Front Shape: High Concave Round
Illumination: No Illumination
Actuator Color: Red

PAV16B_HC_0C0N



Top View



Terminal Arrangement