

Pushbutton Switches

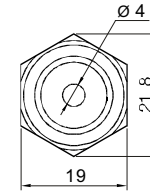
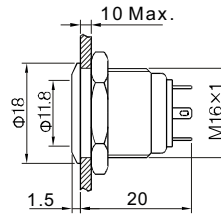
Anti-Vandal Pushbutton Switch - Mounting Hole Ø16mm

PAV16 Series

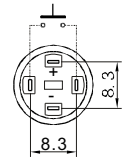


Terminal Type: Solder Lug 2x0.5mm
Front Shape: Flat Round
Illumination: Dot Illuminated blue

PAV16NFS1GN



Top View

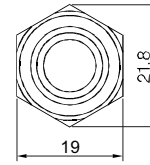
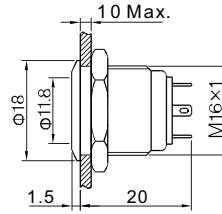


Terminal Arrangement

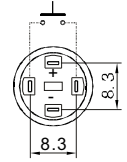


Terminal Type: Solder Lug 2x0.5mm
Front Shape: Flat Round
Illumination: Ring Illuminated red

PAV16NFS2CN



Top View



Terminal Arrangement

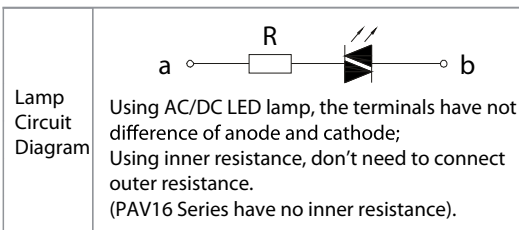
LED SPECIFICATIONS

Color	Red	Yellow	Orange	Green	Blue	White
Rated Voltage (Ue)	AC/DC 1.7 V			AC/DC 2.8 V		
Rated Current (Ie)	20 mA					
Life	40,000 hours					

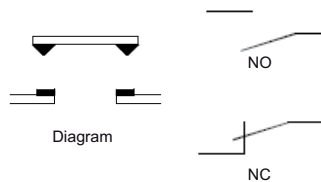
Formula

$$R = \frac{U - U_e}{I_e}$$

Current-Limiting Resistance Configuration Table	Operating Voltage (U)				6V	12V	24V	36V
	Current-Limiting	Red	Yellow	Orange	210Ω, 1/4W	510Ω, 1/2W	1.2KΩ, 3/4W	2.2KΩ, 1W
		Green	Blue	White	160Ω, 1/4W	460Ω, 1/2W	1.2KΩ, 3/4W	2.2KΩ, 1W



SWITCHING



TERMINALS



Screw Solder Lug

How to order:

PAV16

1 SWITCHING CIRCUIT:

- N 1NO (Standard)
- C 1NC (Made by request)

2 FRONT SHAPE:

- D Domed
- F Flat Round
- H High Round
- PF Super Flat Head, Flat Button
- PH Super Flat Head, High Flat Button

3 TERMINATION:

- W Screw
- S Solder Lug

4 ILLUMINATION:

- 0 No Illumination
- 1 Dot Type Illumination
- 2 Ring Type Illumination

5 LED COLOR:

- N No Illumination
- C Red
- D Orange
- F Green
- G Blue
- E Yellow
- B White

6 LED VOLTAGE:

- 0 No Illumination
 - 6 AC/DC 6V
 - 12 AC/DC 12V
 - 24 AC/DC 24V
 - 110 AC/DC 110V
 - 220 AC/DC 220V
- (Other Voltage can be made by request)

7 ENGRAVING:

- A Stop
 - B Start
 - C Return
 - D Reset
 - E |
 - F ||
 - G ◀
 - H ↑
 - J ■
 - K ⏻
 - L ⚡
 - M ⚙
 - N ○
- (Other engraving can be made by request)

8 MATERIAL:

- blank Stainless Steel
- N Nickel-Plated Brass
- G Gold-Plated Brass

General Specifications:

CHARACTERISTICS

- > Protection Degree: IP65
- > Anti Vandal Degree: IK08
- > Switch Rating: 2A 36VDC
- > Operation Type: Momentary
- > Contact Configuration: 1NO or 1NC
- > Contact Resistance: 50mΩ Max.
- > Insulation Resistance: 1000MΩ Min.
- > Dielectric Intensity: 2000VAC
- > Operating Temperature: -20°C to +55°C
- > Mechanical Life: 1,000,000 cycles
- > Electrical Life: 200,000 cycles
- > Panel Thickness: 1 to 6 mm
- > Torque: 5 to 14 Nm
- > Operation Pressure: about 4 N
- > Operation Travel: about 1.5mm
- > Switching: Double-Break Slow-Motion Contact

MATERIAL

- > Contact: Silver alloy
- > Button: Stainless steel(Nickel Plated, Gold Plated)
- > Body: Stainless steel(Nickel Plated, Gold Plated)
- > Base: PBT

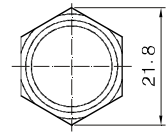
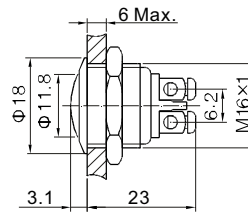
Pushbutton Switches

Anti-Vandal Pushbutton Switch - Mounting Hole $\text{\O}16\text{mm}$

PAV16 Series



Terminal Type: Screw Terminal
Front Shape: Domed
Illumination: Non Illuminated

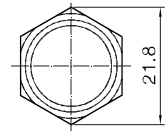
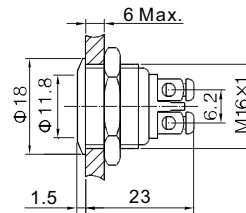


Top View

PAV16NDW0NN



Terminal Type: Screw Terminal
Front Shape: Flat Round
Illumination: Non Illuminated

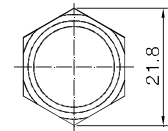
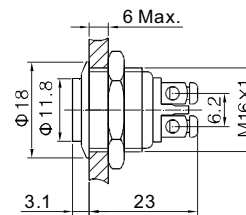


Top View

PAV16NFW0NN



Terminal Type: Screw Terminal
Front Shape: High Round
Illumination: Non Illuminated

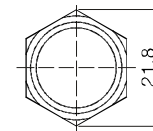
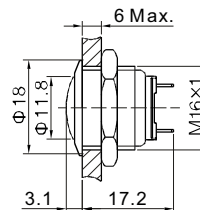


Top View

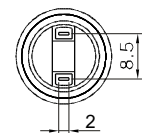
PAV16NHW0NN



Terminal Type: Solder Lug
Front Shape: Domed
Illumination: Non Illuminated



Top View

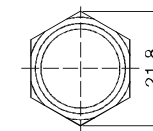
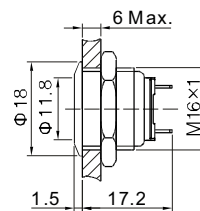


Terminal Arrangement

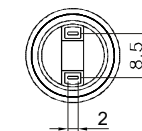
PAV16NDS0NN



Terminal Type: Solder Lug
Front Shape: Flat round
Illumination: Non Illuminated



Top View

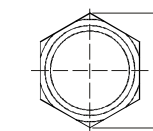
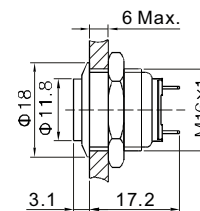


Terminal Arrangement

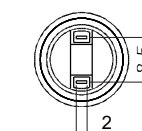
PAV16NFS0NN



Terminal Type: Solder Lug
Front Shape: High round
Illumination: Non Illuminated



Top View



Terminal Arrangement

PAV16NHS0NN

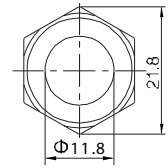
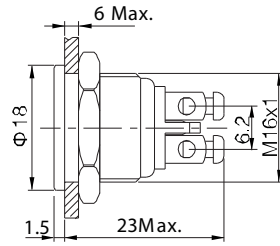
Pushbutton Switches

Anti-Vandal Pushbutton Switch - Mounting Hole $\text{\O}16\text{mm}$

PAV16 Series



Terminal Type: Screw Terminal
Front Shape: Super Flat
Illumination: Non Illuminated

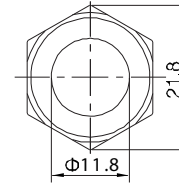
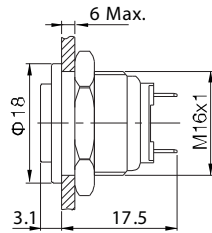


Top View

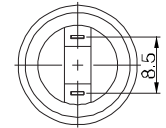
PAV16NPFW0NN



Terminal Type: Solder Lug
Front Shape: Super Flat High
Illumination: Non Illuminated



Top View

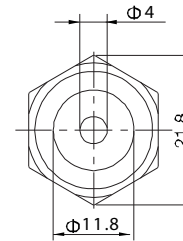
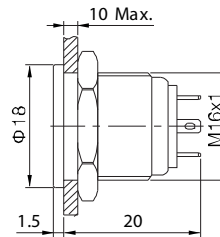


Terminal Arrangement

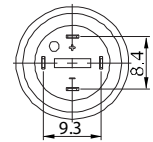
PAV16NPHS0NN



Terminal Type: Solder Lug
Front Shape: Super Flat
Illumination: Dot Illuminated



Top View

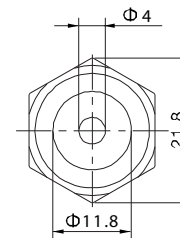
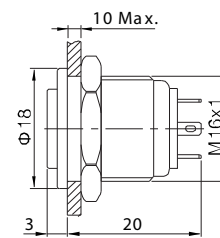


Terminal Arrangement

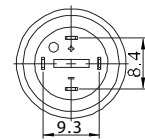
PAV16NPFS1C_



Terminal Type: Solder Lug
Front Shape: Super Flat High
Illumination: Dot Illuminated



Top View

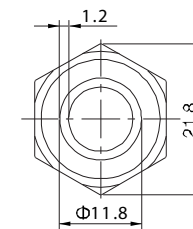
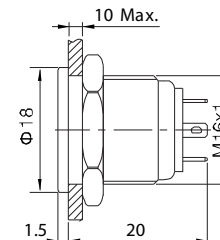


Terminal Arrangement

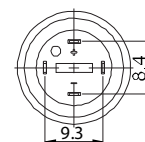
PAV16NPHS1F_



Terminal Type: Solder Lug
Front Shape: Super Flat
Illumination: Ring Illuminated



Top View

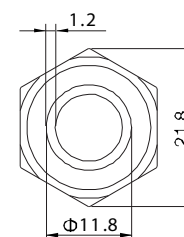
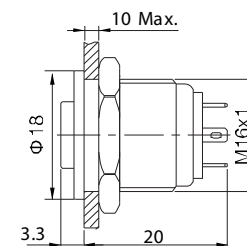


Terminal Arrangement

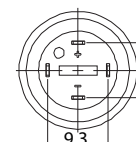
PAV16NPFS2C_



Terminal Type: Solder Lug
Front Shape: Super Flat High
Illumination: Ring Illuminated



Top View



Terminal Arrangement

PAV16NPHS2C_