

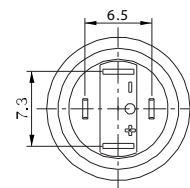
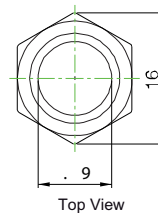
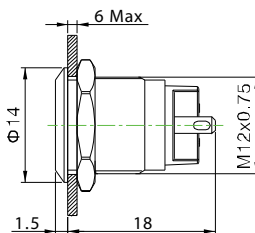
Pushbutton Switches

Anti-Vandal Pushbutton Switch - Mounting Hole Ø12mm

PAV12 Series



Terminal Type: Solder Lug 2x0.5mm
Front Shape: Flat Round
Illumination: No Illumination



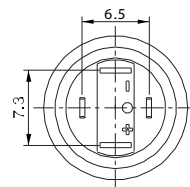
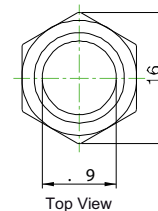
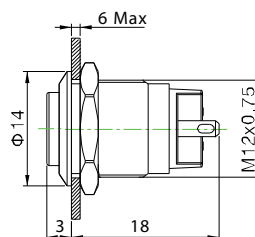
Top View

Terminal Arrangement

PAV12NFS0N0N



Terminal Type: Solder Lug 2x0.5mm
Front Shape: High Round
Illumination: No Illumination



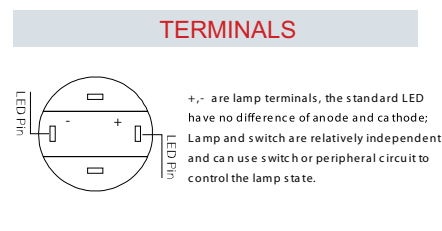
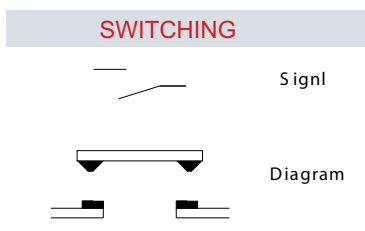
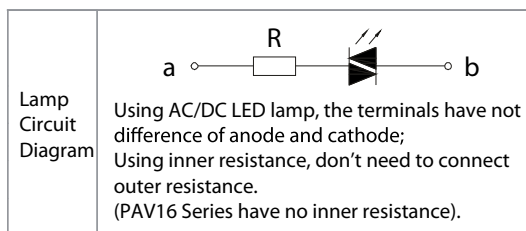
Top View

Terminal Arrangement

PAV12NH50N0N

LED SPECIFICATIONS

Lamp parameter	Lamp Type	Dot/Ring (LED)							
	Lamp Color	R Y O		G B W					
	Rated Voltage Ue	AC/DC 1.8V		AC/DC 2.8V					
	Rated Current Ie	15mA							
	Life	40000 hours							
resistor configuration (Recommended value)	Voltage U	6V		12V		24V		36V	
		Current Limiting Resistance R	R Y O	270 ,1/4W 820 ,1/2W 1.5K ,1W 2.7K ,1W	G B W	220 ,1/4W 680 ,1/2W 1.5K ,1W 2.7K ,1W			



How to order:

PAV12

1 SWITCHING CIRCUIT:

N 1NO (Standard)

2 FRONT SHAPE:

F Flat Round
H High Round

3 TERMINATION:

S Solder Lug

4 ILLUMINATION:

0 No Illumination
1 Dot Type Illumination
2 Ring Type Illumination

5 LED COLOR:

N No Illumination
C Red
D Orange
F Green
G Blue
E Yellow
B White

6 LED VOLTAGE:

0 No Illumination
6 AC/DC 6V
12 AC/DC 12V
24 AC/DC 24V
110 AC/DC 110V
220 AC/DC 220V
(Other Voltage can be made by request)

7 ENGRAVING:

A Stop B Start C Return D Reset
E | F || G ◀ H ↑
J ■ K ⏻ L ⚡ M ⚙
N ○
(Other engraving can be made by request)

8 MATERIAL:

blank Stainless Steel

General Specifications:

CHARACTERISTICS

- > Protection Degree: IP65
- > Anti Vandal Degree: IK08
- > Switch Rating: 2A 36VDC
- > Operation Type: Momentary
- > Contact Configuration: 1NO
- > Contact Resistance: 50mΩ Max.
- > Insulation Resistance: 1000MΩ Min.
- > Dielectric Intensity: 1500VAC
- > Operating Temperature: -20°C to +55°C
- > Mechanical Life: 500,000 cycles
- > Electrical Life: 200,000 cycles
- > Panel Thickness: 1 to 6 mm
- > Torque: about 0.6 Nm
- > Operation Pressure: 2.5 to 4 N
- > Operation Travel: about 1.5mm
- > Switching: Double-Break Slow-Motion Contact

MATERIAL

- > Contact: Silver alloy
- > Button: Stainless steel
- > Body: Stainless steel
- > Base: PA

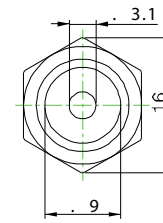
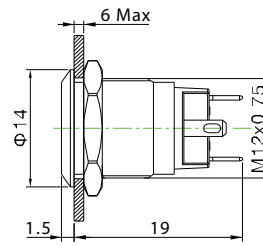
Pushbutton Switches

Anti-Vandal Pushbutton Switch - Mounting Hole $\varnothing 12\text{mm}$

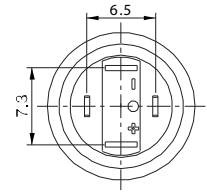
PAV12 Series



Terminal Type: Solder Lug
Front Shape: Flat Round
Illumination: Dot Illuminated Red



Top View

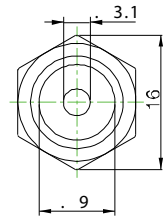
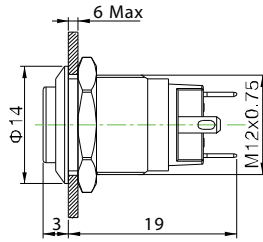


Terminal Arrangement

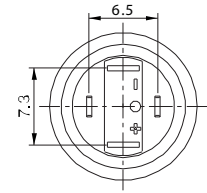
PAV12NFS1C_N



Terminal Type: Solder Lug
Front Shape: High Round
Illumination: Dot Illuminated Green



Top View

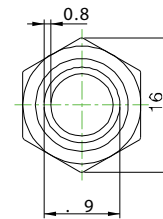
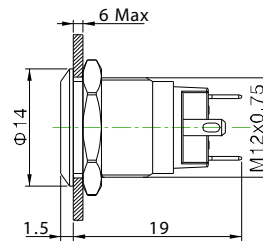


Terminal Arrangement

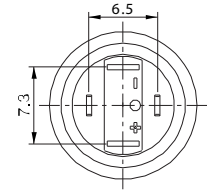
PAV12NHS1F_N



Terminal Type: Solder Lug
Front Shape: Flat Round
Illumination: Ring Illuminated Green



Top View

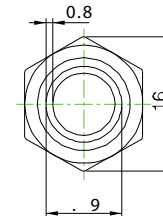
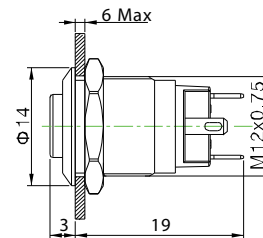


Terminal Arrangement

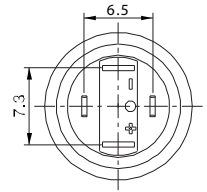
PAV12NFS2F_N



Terminal Type: Solder Lug
Front Shape: High Round
Illumination: Ring Illuminated Blue



Top View



Terminal Arrangement

PAV12NHS2G_N