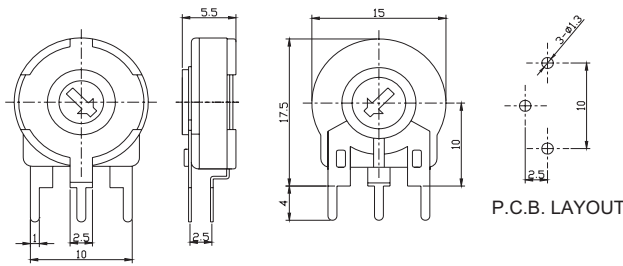


Potentiometers

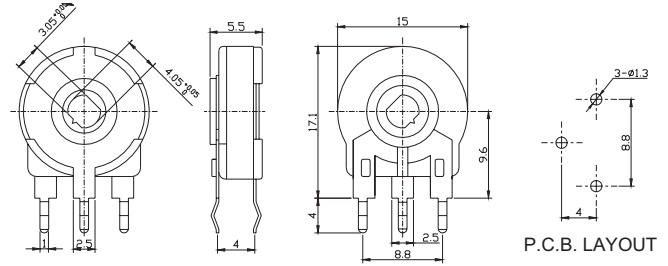
15mm Trimming Potentiometers

GP64 Series

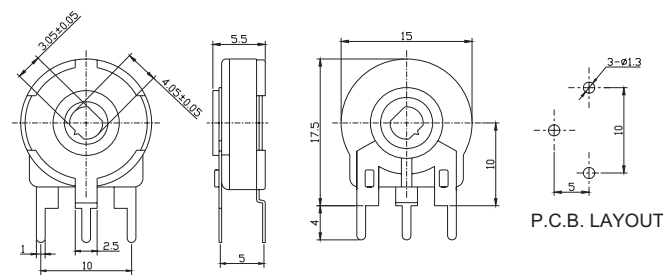
Design & Dimensions: Vertical Mounting, horizontal Adjusting:



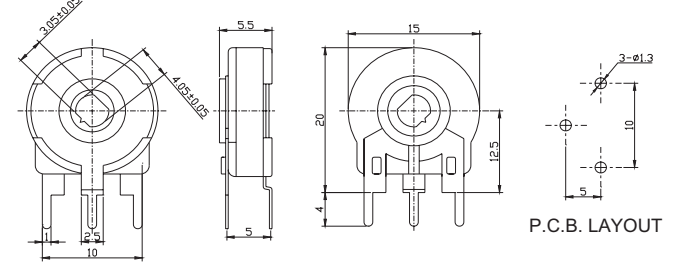
R1



R3

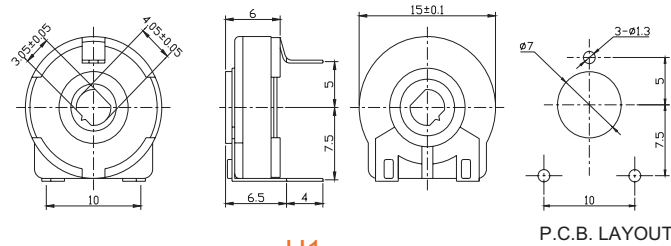


R2

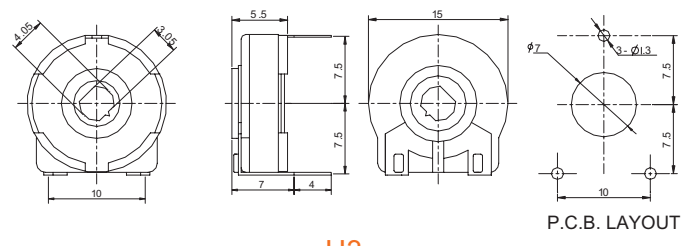


R4

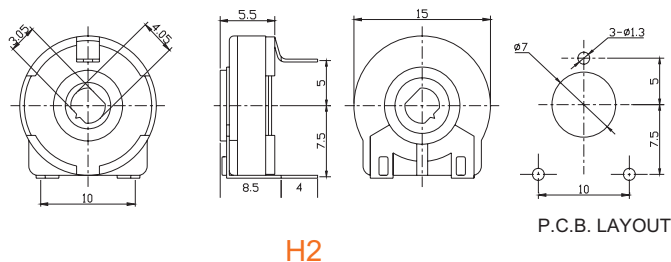
Design & Dimensions: Horizontal Mounting, vertical Adjusting:



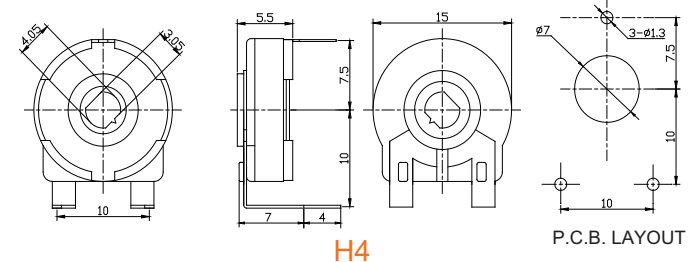
H1



H3



H2



H4

How to order:

GP64

1	2	3	4	5
<input type="text"/>	<input type="text"/>	<input type="text"/>	<input type="text"/>	<input type="text"/>

1 DESIGN:

- R1 See Drawings R1
- R2 See Drawings R2
- R3 See Drawings R3
- R4 See Drawings R4
- H1 See Drawings H1
- H2 See Drawings H2
- H3 See Drawings H3
- H4 See Drawings H4

2 ROTOR TYPE:

- L See Drawings Page 2
- M See Drawings Page 2
- N See Drawings Page 2
- G See Drawings Page 2
- R See Drawings Page 2

3 TAPER:

- A Lin.
- G Log.
- AG Alog.

4 RESISTANCE VALUE

Free text

e.g.:

- 100 : 100 Ω (Min. Value)
- 1K: 1,000 Ω
- 10K: 10,000 Ω
- 100K: 100,000 Ω
- 1M: 1,000,000 Ω
- 5M: 5,000,000 Ω (Max. Value)

5 RESISTANCE TOLERANCE:

- 2020 ±20% (for 100Ω to 1MΩ)
- 3030 ±30% (for 1MΩ to 5MΩ)

微调合成碳膜电位器 SPECIFICATIONS

一般事项	General
□此规格适用于电子设备之可变电阻器。	-This specification is applied to potentiometers used for electronic equipment.
□使用温度范围: -25°C~+70°C	-Operating temperature: -25°C~+70°C
特点	Features
□长寿命, 低成本	-Carbon resistive element.
□优良的防尘结构, 没有任何开口部分	-Dust proof enclosure.
□阻值线性多样化	-Polyester substrate.
□力矩小	-Also upon request:
□旋转 50%处有定位或整个旋转行程带定位	◇Wiper positioned at 50% or fully clockwise.
□品种规格多, 适用性强	◇Supplied in magazines for automatic insertion.
	◇Long life model for low cost control pot applications
	◇self extinguishable plastic UL 94V-0
	◇cut track option
	◇special tapers
	◇mechanical detents
	◇low & extra low torque versions
	◇special switch option

性能说明 CHARACTERISTICS

电气性能 ELECTRICAL SPECIFICATIONS

阻值范围	$0 \Omega < R_n \leq 5M \Omega$
阻值误差 Tolerance	$100 \Omega \leq R_n \leq 1M \Omega \dots \dots \pm 20\%$ $1M \Omega < R_n \leq 5M \Omega \dots \dots \pm 30\%$
最大电压 Max. voltage	250V DC (lin), 125V DC (no lin)
额定功率 Rated power	0.25W (lin), 0.12W (no lin)
线性 Taper	Lin, Log, Alog
残留电阻 Residual resistance	$\leq 5\% R_n (3 \Omega \text{ min})$
平滑性 Equivalent noise resistance	$\leq 3\% R_n (3 \Omega \text{ min})$

机械性能 MECHANICAL SPECIFICATIONS

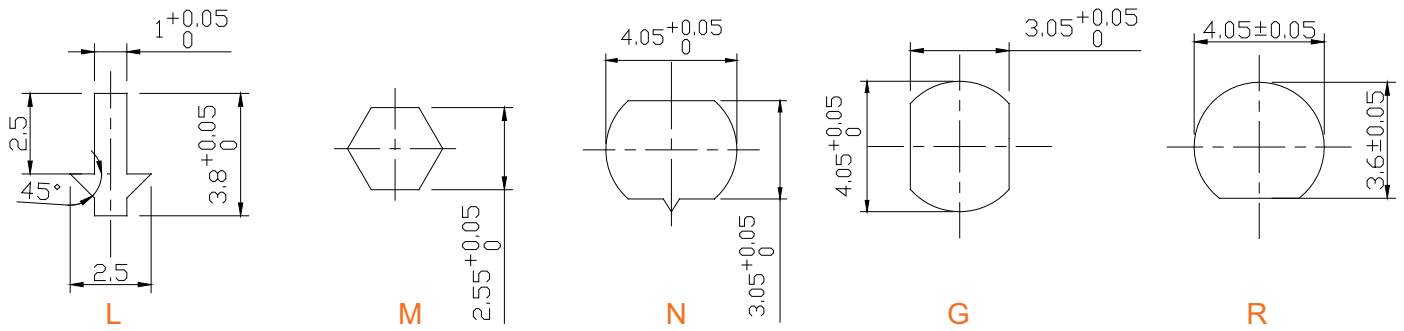
机械旋转角度	$5^\circ \text{ to } 270^\circ$
电气旋转角度 Electrical rotation angle	$250^\circ \pm 20^\circ$
旋转力矩	5~2.5Ncm
止档力矩 Stop torque	>10Ncm
机械耐久性 Mechanical endurance	Long life 10,000cycles
焊接 Soldering	温度 $T \leq 265^\circ\text{C} \pm 5^\circ\text{C}$, 时间 $t \leq 5\text{s}$

Potentiometers

15mm Trimming Potentiometers

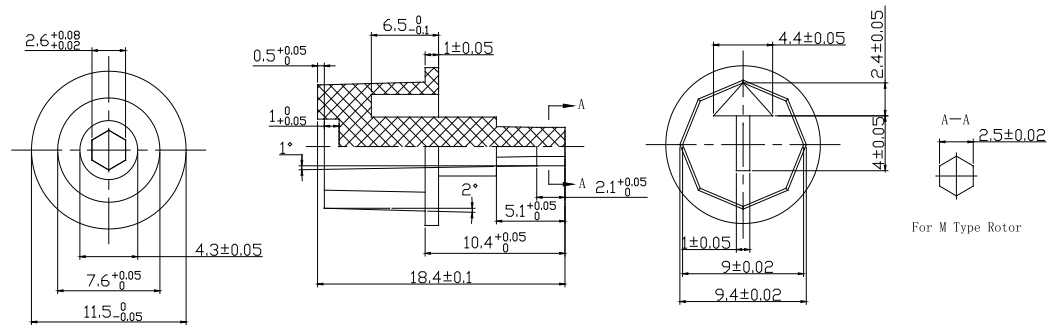
GP64 Series

Rotor Types:



Optional: Additional Shaft

SHAFT-1



SHAFT-2

