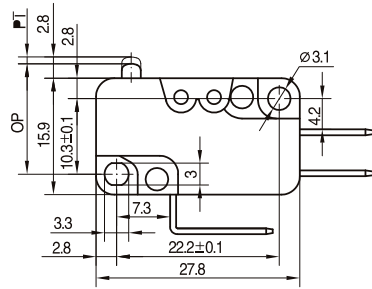
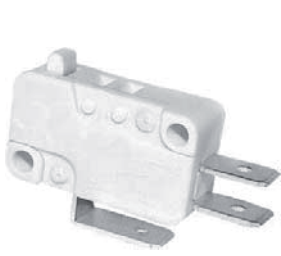


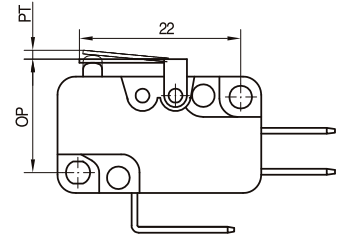
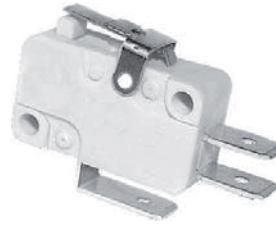
Micro Switches

Micro Switches

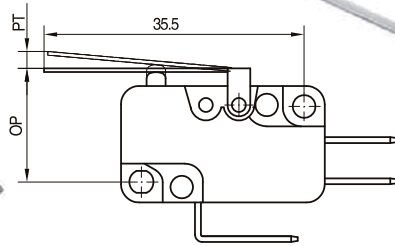
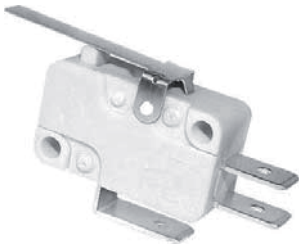
MP67 Series



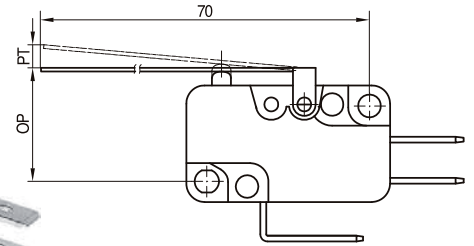
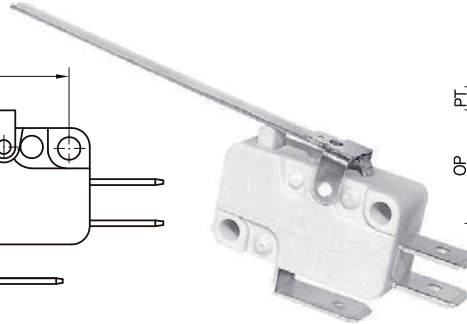
MP67_00



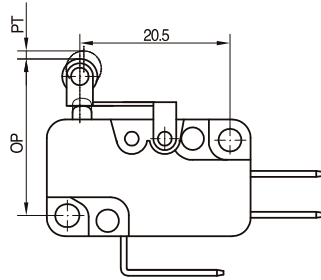
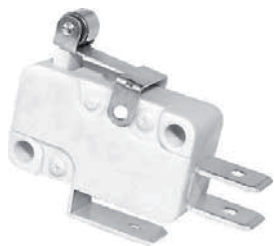
MP67_01



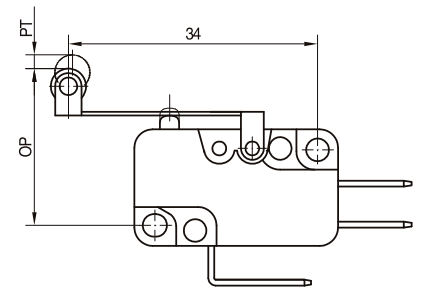
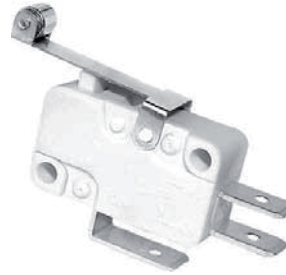
MP67_03



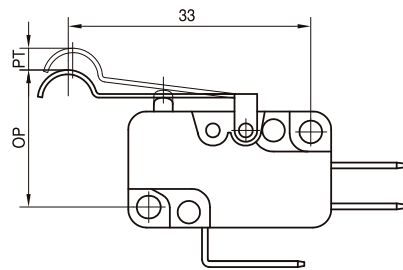
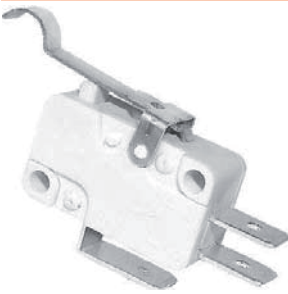
MP67_02



MP67_04

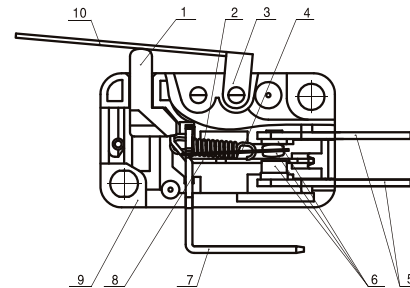


MP67_05



MP67_06

INTERNAL CONFIGURATION DRAWING



- 1: Plunger
- 2: Pull spring
- 3: Cover
- 4: Moving piece
- 5: Terminal
- 6: Contact
- 7: Support
- 8: Lever
- 9: Case
- 10: Moving arm

How to order:

MP67 1 2 3 4 5 6

1 DEGREE OF TEMPERATURE:

blank 10T125

2 RATING CURRENT:

S 16(4)A 250VAC/16A125VAC
 H 10(3)A 250VAC/10A125VAC
 M 6A(2)A 250VAC/6A125VAC
 N 3A(1)A 250VAC/3A125VAC
 P 0.1(0.05)A 250VAC/0.1A125VAC

3 CONTACT:

Z SPDT
 T SPST-NO
 D SPST-NC

4 INDICATING OF LEVER:

blank Away from Plunger (Standard)
 N Near to Plunger

5 LEVER TYPE:

00 No lever
 01 Short lever
 02 Long lever
 03 Middle lever
 04 Short Roller
 05 Long Roller
 06 Arc lever

(customizing available by request)

6 TERMINAL TYPE:

A 250 Quick Connect Terminal No.1
 B 250 Quick Connect Terminal No.2
 C 250 Quick Connect Terminal No.3
 K 250 Quick Connect Terminal No.4
 D 187 Quick Connect Terminal(0.5mm)
 E 187 Quick Connect Terminal(0.8mm)
 F Solder Terminal
 G Screw Terminal
 H Upper PCB Terminal
 J Bottom PCB Terminal
 L Left Side PCB Terminal
 R Right Side PCB Terminal

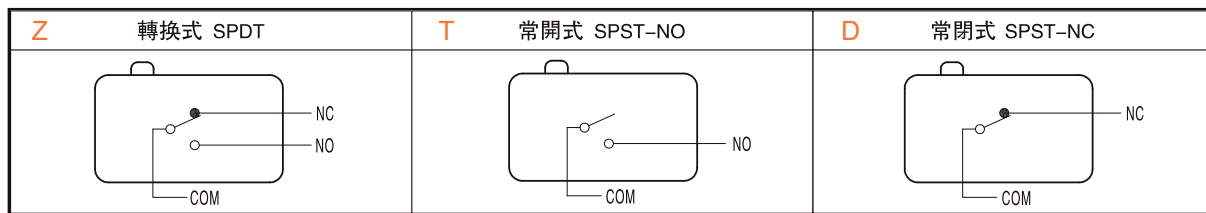
(customizing available by request)

7 OPERATING FORCE:

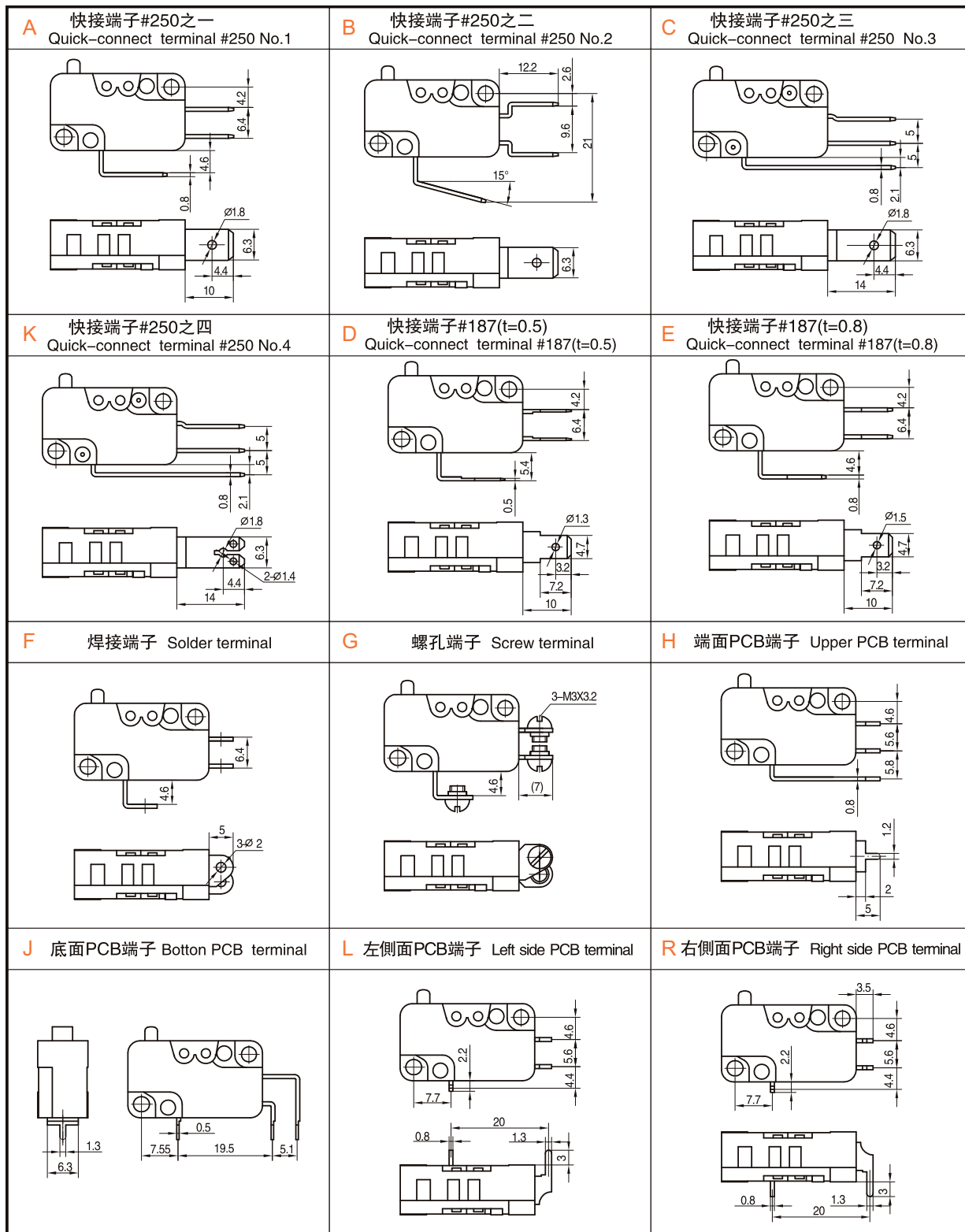
015 0.15N
 045 0.45N
 075 0.75N
 100 1N
 170 1.75N
 200 2N
 250 2.5N
 285 2.85N
 400 4N



Circuit Illustration



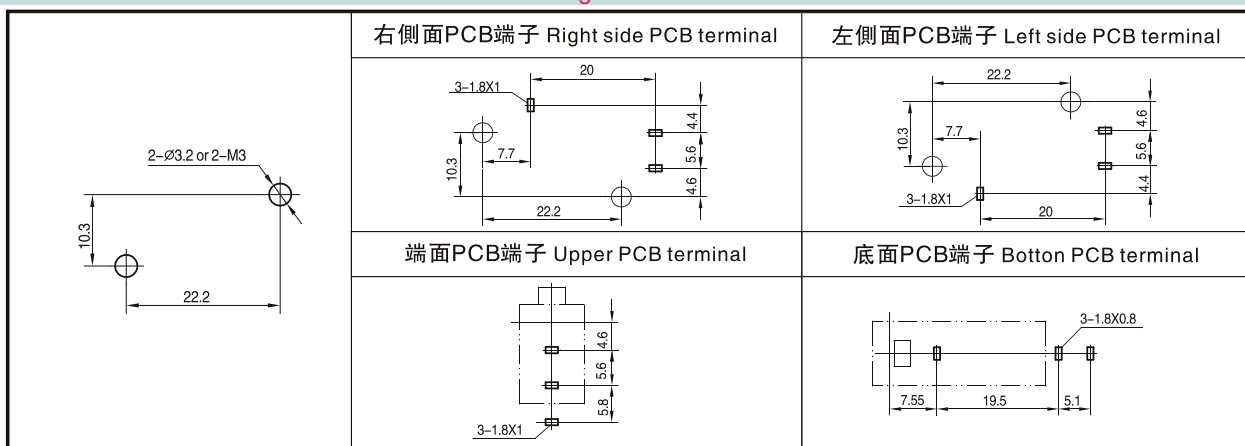
Connect Terminals Collocation and Dimensions



Operating Force

Actuator Forms	PT Max(N)	PT Max(mm)	OT Min(mm)	OP (mm)	015	045	075	100	170	285	400
00	1.2	1.3	0.25	14.2-15.2	0.15N	0.45N	0.75N	1N	1.7N	2.85N	4N
01	1.6	1.3	0.4	14.7-15.8	0.15N	0.45N	0.75N	1N	1.7N	2.85N	4N
02	7.6	4.7	1.7	12.7-17.8	0.035N	0.10N	0.17N	0.22N	0.38N	0.63N	0.9N
03	3.2	2.2	0.8	14.1-16.4	0.08N	0.22N	0.35N	0.5N	0.86N	1.44N	2N
04	1.2	1.0	0.25	19.7-21.2	0.15N	0.45N	0.75N	1N	1.7N	2.85N	4N
05	3.2	2.2	0.8	19.3-21.6	0.08N	0.22N	0.35N	0.5N	0.86N	1.44N	2N
06	3.2	2.2	0.8	17.8-20.1	0.08N	0.23N	0.38N	0.52N	0.9N	1.5N	2.1N

Mounting Hole Dimensions



Specifications

項目 Item	特性值 Value
工作速度 Operating speed	0.1mm ~ 1m/s (與驅動方式有關) (Related with actuator forms)
工作頻率 Operating frequency	機械 60次/min; 電氣 25次/min Mechanical 60 cycles/min; Electrical 25 cycles/min
絕緣電阻 Insulation resistance	≥100MΩ (500VDC)
接觸電阻 Contact resistance	動作力>0.75N : ≤50mΩ(見注) 動作力≤0.75N : ≤100mΩ(見注) OF>0.75N: ≤50mΩ(see note) OF≤0.75N: ≤100mΩ(see note)
耐電壓 Test voltage	同極不相接端子間 Between terminals of the same polarity
	帶電金屬零件與地(外殼)之間、接線端與不帶電金屬件之間 Between current-carrying metal parts and ground(case), and between each terminal and non-current-carrying metal parts.
抗振動 Vibration resistance	10 ~ 55Hz, 1.5mm雙振幅 Double amplitude
抗衝擊 Shock resistance	破壞:動作力>0.5N: 1000m/s ² (約100G)max 動作力≤0.5N: 400m/s ² (約40G)max 故障:動作力>0.5N: 200m/s ² (約20G)max 動作力≤0.5N: 100m/s ² (約10G)max Destruction: OF>0.5N: 1000m/s ² (approx.100G)max OF≤0.5N: 400m/s ² (approx.40G)max Malfunction: OF>0.5N: 200m/s ² (approx.20G)max OF≤0.5N: 100m/s ² (approx.10G)max
壽命 Life expectancy	機械 ≥2,000,000次; Mechanical ≥2,000,000 cycles 電氣 ≥50,000次; Electrical ≥50,000cycles
質量 Weight	約8g(無動臂型) Approx. 8g(No lever)
安全認證 Safety approvals	UL、CUL、ENEC、SEMKO、CE、EK、CQC

注: 指無動臂時按鈕上的動作力。 Note: Refers to the operating force of no lever.