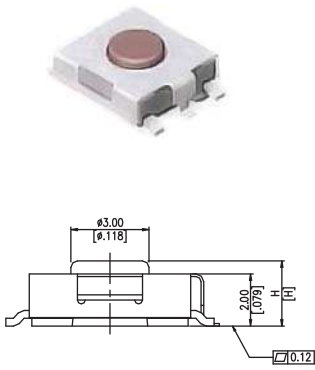


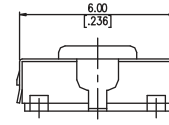
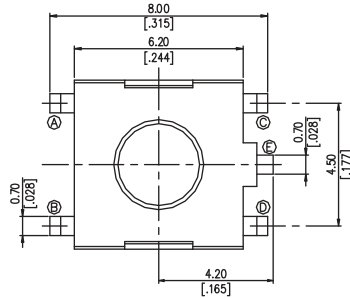
Tactile Switches

6x6mm Thinner Type Tactile Switches

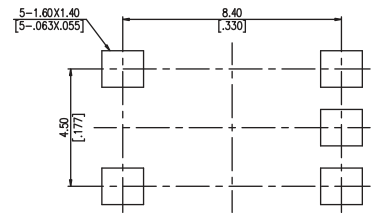
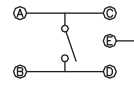
TP46 Series



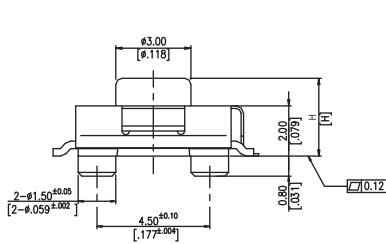
TP46GM...



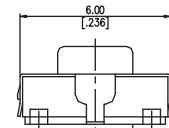
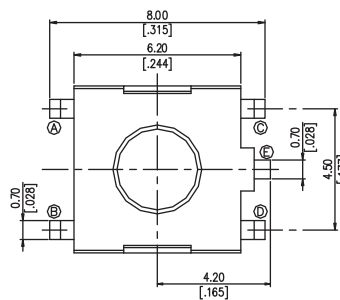
CIRCUIT DIAGRAMM



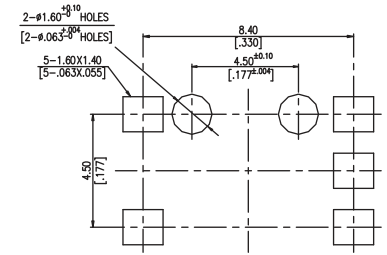
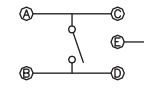
P.C.B LAYOUT



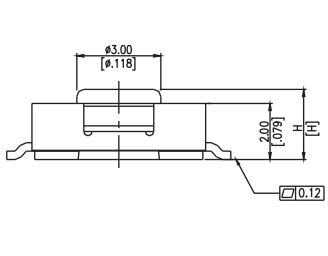
TP46GMB...



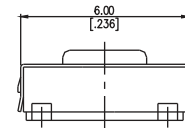
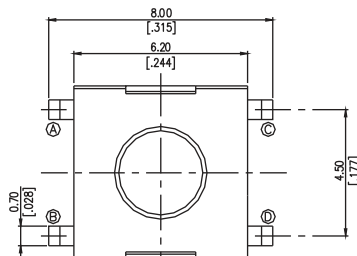
CIRCUIT DIAGRAMM



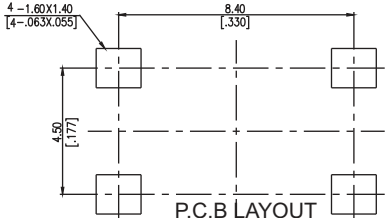
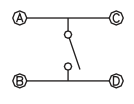
P.C.B LAYOUT



TP46M...



CIRCUIT DIAGRAMM



P.C.B LAYOUT

How to order:

TP46

- | | |
|---|--|
| 1 GROUND TERMINAL:
Blank Without Ground Terminal
G With Ground Terminal | 5 ACTUATOR COLOR & OPERATING FORCE:
A Black, 100gf
K Brown, 160gf
C Red, 260gf |
| 2 TERMINAL TYPE:
M Gull Wing Terminals | 6 ROHS:
Blank RoHS & Lead Free Solderable
H Halogen Free |
| 3 BASE POST:
Blank Without Base Post
B With Base Post | 7 PACKAGING:
BK Bulk
TB Tube(only for Without Base Post)
TR Tape & Reel |
| 4 HEIGHT "H":
25 H = 2.5 mm
31 H = 3.1 mm
35 H = 3.5 mm
52 H = 5.25 mm | |

General Specifications:

MECHANICAL

- > Stroke: 0.25+0.2/-0.1 mm
- > Operating Temperature Range: -25°C to +70 °C
- > Storage Temperature Range: -30°C to +80°C

ELECTRICAL

- > Rating: 50mA 12VDC
- > Contact Resistance: 100mΩ Max.
- > Insulation Resistance: 100M Ω Min. at 100 VDC
- > Dielectric Strength: 100VAC / 1 minute ±5s
- > Contact Arrangement: 1P1T
- > Electrical Life: 1,000,000 cycles (100gf, 160)
100,000 cycles (260gf)

MATERIALS

ITEM	DESC	QTY	MATERIALS	TREATMENT	REMARK
1	STEM	1	HIGH-TEMP THERMOPLASTIC PAST UL 94V-0	-	-
2	COVER	1	PHENOLIC RESIN (with Glass Fiber) NICKEL SILVER (or Silver Plating)	NONE	-
3	CONTACT	1	STAINLESS STEEL	WITH SILVER CLADDING	-
4	TERMINAL	1	BRASS	WITH SILVER PLATING	-
5	BASE	1	HIGH-TEMP THERMOPLASTIC PAST UL 94V-0 2LCP	MOLDED BLACK	-

