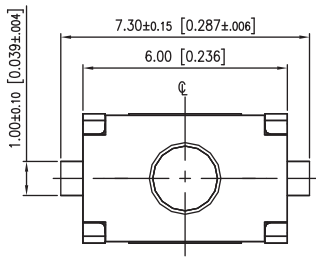


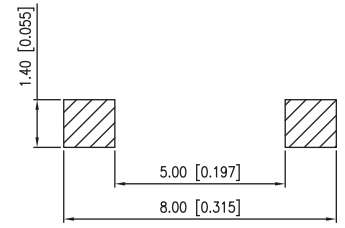
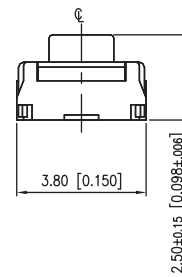
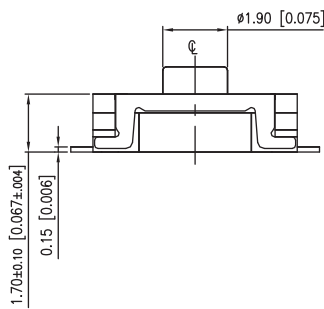
Tactile Switches

6x3.8mm SMT Tactile Switch

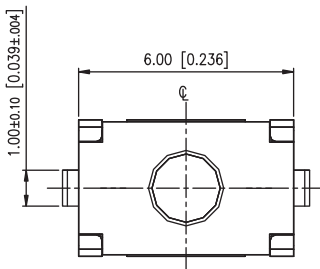
TP25 Series



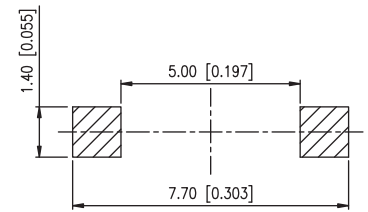
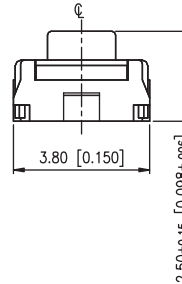
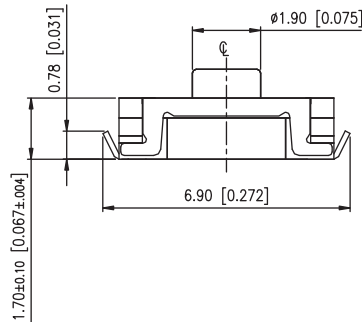
TP25... Flat Terminals



P.C.B. LAYOUT



TP25L... Bending Terminals



P.C.B. LAYOUT

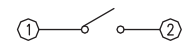
SPECIFICATIONS:

- > Rating: 25mA 24VDC
- > Contact Resistance: 100 mohm Max.
- > Insulation Resistance: 100 Mohm Min.
- > Dielectric Strength: 300VAC 1 Minute
- > Electrical Life: 200,000 Cycles (by 200gf & 300gf)
100,000 Cycles (by 450gf)
- > Stroke: 0.30±0.15mm (by 200gf)
0.35±0.15mm (by 300gf)
0.45±0.15mm (by 450gf)
- > Operating Temperature: -40°C ~ +85°C

MATERIALS:

- > Cover: Stainless Steel
- > Stem: Rubber black
- > Dome: Stainless Steel with Silver or Gold plated
- > Base: LCP High-temp Thermoplastic black
- > Terminals: Phosphor Bronze with Silver plated

CIRCUIT:



SOLDERING CONDITIONS:

- > Hand Soldering: 30W 350°C 5 Seconds Max.
- > Reflow Soldering: 260°C 5~10 Seconds Max.

PACKAGING:

- > Tape & Reel Packaging: 2700 PCs/Reel



UNIT: MM [INCH]
General Tolerance: ±0.2MM

How to order:

TP25 1 2 3 4 5

1 TERMINAL TYPE:
No Code Flat SMT Terminals (Standard)
L Bending SMT Terminals

3 DOME PLATING MATERIAL:
AG Silver plated
AU Gold plated

5 PACKAGE STYLE:
TR Tape & Reel

2 OPERATING FORCE:
K 200±50gf
C 300±75gf
J 450±110gf

4 SOLDERING:
No Code Lead Free solderable (Standard)
H Halogen-Free



All specifications are restricted to QA test criteria.
DRW: D. L. JIN, CHK: D.F. LEE, APP: H.Z. QIU, DC: 2012-12-14, UPD: 2025-04-07.