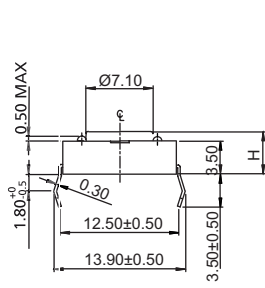


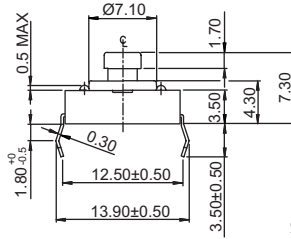
Tactile Switches

Standard 12x12mm Tactile Switches

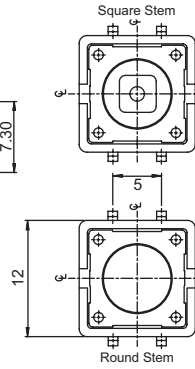
TP4 Series



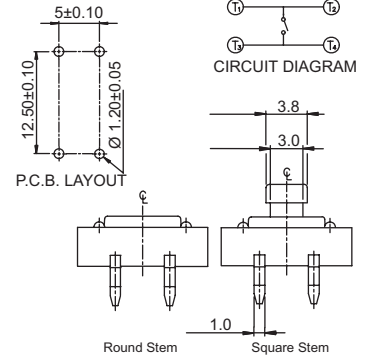
Round Stem



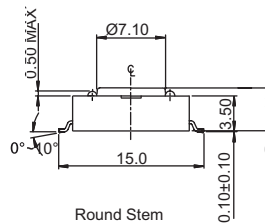
Square Stem for Caps



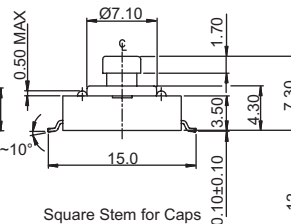
Round Stem



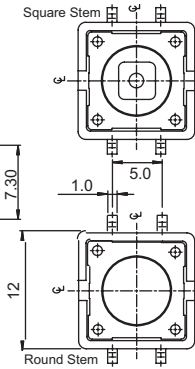
TP4H THT Terminals



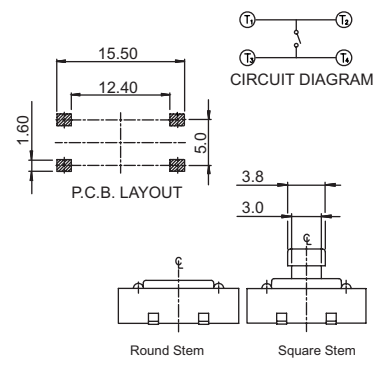
Round Stem



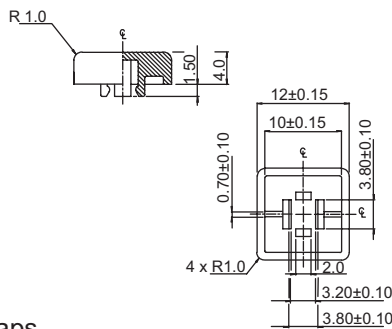
Square Stem for Caps



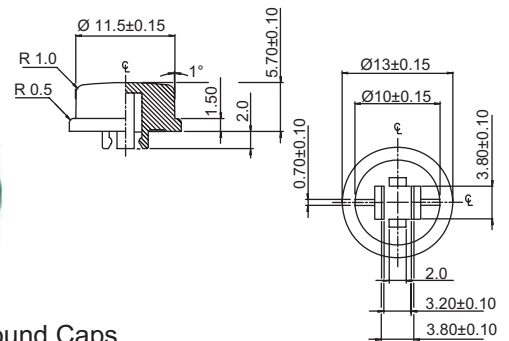
Round Stem



TP4S SMT Terminals



K12S Square Caps



K12R Round Caps

How to order:

TP4 + (Caps)

- | | |
|--|----------------------------|
| 1 TYPE OF TERMINALS: | 6 PACKAGE STYLE: |
| H THT | TB Tube |
| S SMT | TR Tape & Reel (TP4S Only) |
| 2 POST (TP4H only) | Optional: |
| No Code Without Post | 7 CAP TYPE |
| P With Post | (Only for Square Stems): |
| 3 DIMENSION "H": | K12S Square Caps |
| 1 H=4.3mm (Round Stem) | K12R Round Caps |
| 4 H=7.3mm (Square Stem 3.8mm) | |
| 5 H=8.5mm (Round Stem) | |
| Individual stem heights available by request | 8 COLOR OF CAPS: |
| 4 STEM COLOR & OPERATING FORCE: | A Black |
| K Brown & 160±50gf | B Ivory |
| C Red & 260±50gf | C Red |
| J Salmon & 320±80gf | E Yellow |
| E Yellow & 520±130gf | F Green |
| 5 MATERIALS OF DOME: | G Blue |
| N Phosphor Bronze Dome | H Gray |
| S Stainless Steel Dome | S Salmon |

General Specifications:

- MATERIALS**
- » Contact Disc: Phosphor Bronze with silver cladding
 - » Terminal: Brass with silver plated
- MECHANICAL**
- » Stroke: 0.35 ± 0.1 mm
 - » Operation Temperature Range: -40°C to +85°C
- ELECTRICAL**
- » Electrical Life (Phosphor Bronze Dome):
 - 100,000 cycles for 260gf, 320gf and 520gf
 - 200,000 cycles for 160gf
 - » Electrical Life (Stainless Steel Dome):
 - 300,000 cycles for 320gf, 520gf
 - 500,000 cycles for 260gf
 - 1,000,000 cycles for 160gf
 - » Rating: 50mA, 12VDC
 - » Contact Arrangement: 1 pole 1 throw
- LEADFREE SOLDERING PROCESSES**
- » Wave Soldering: Recommended solder temperature at 260°C max. 5 seconds subject to PCB 1.6mm thickness (for THT).
 - » Reflow Soldering: When applying reflow soldering, the peak temperature or the reflow oven should be set to 260°C max. 10 seconds max. (for SMT).

General Tolerance: ± 0.2 mm