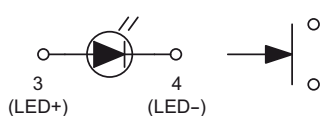
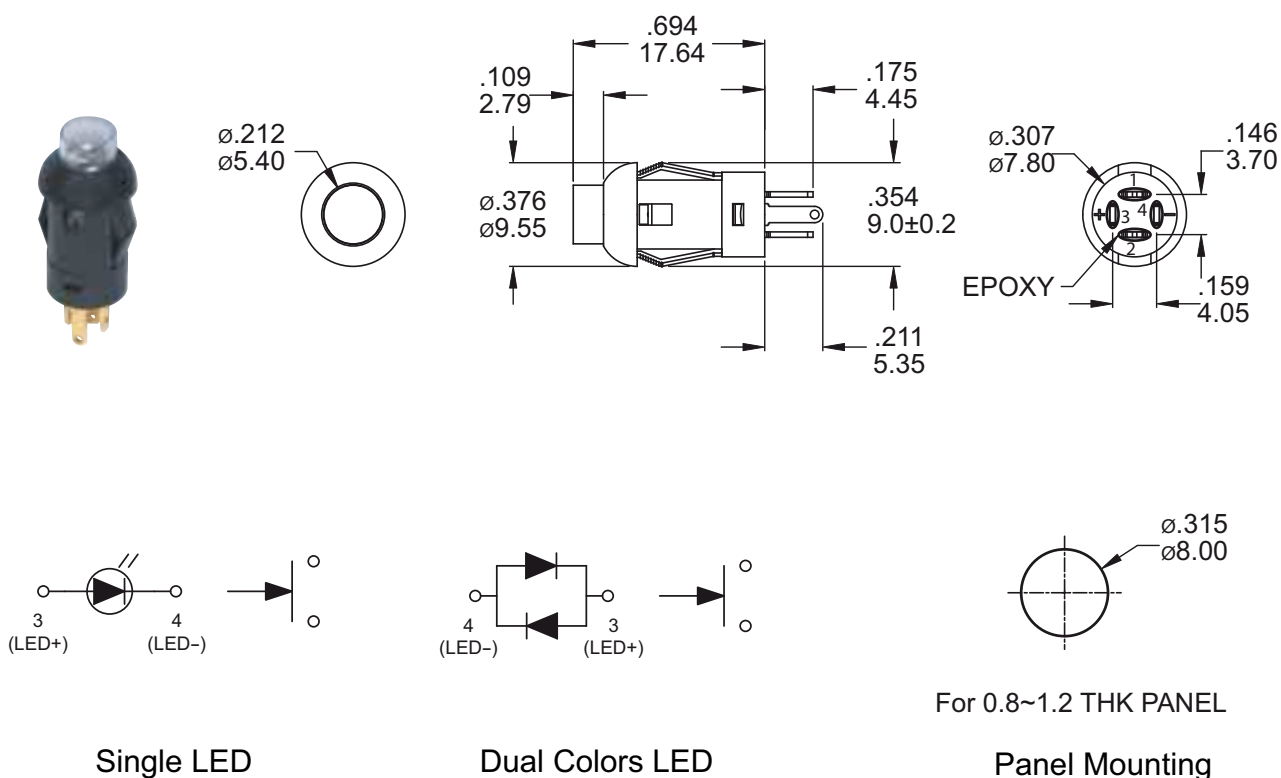


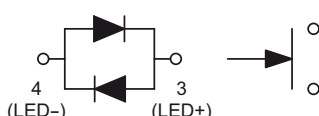
Pushbutton Switches

Momentary Pushbutton Switches

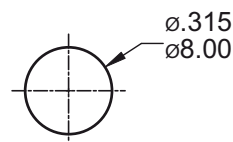
PB76 Series



Single LED



Dual Colors LED



For 0.8~1.2 THK PANEL

Panel Mounting

How to order:

PB76

1 ACTUATIONG:

M Momentary

2 LED COLOR:

N Without LED

B White

C Red

E Yellow

F Green

G Blue

GF Blue(Green)

3 COLOR OF ACTUATOR:

T Transparent (with LED)

A Black (without LED)

C Red (without LED)

... Other Colors by Request

General Specifications:

SPECIFICATIONS

POLE-POSITION : Momentary Type, SPST with LED

CONTACT RATING : 30V DC,0.1A

CONTACT RESISTANCE : 50mΩ max. 1.5V DC ; 100mA,
by Method of Voltage DROP

INSULATION RESISTANCE : 100MΩ min. 500V DC

DIELECTRIC STRENGTH : Breakdown is not allowable ;
500V AC for 1 Minute

OPERATING FORCE : 250±100gf

OPERATING LIFE : 50,000 cycles

OPERATING TEMPERATURE RANGE : -40°C ~ 85°C

TOTAL TRAVEL : 1.2±0.3mm

MATERIALS

CAP : PC

CASE & HOUSING : Nylon 6/6

TERMINALS : Copper alloy with gold plated.