
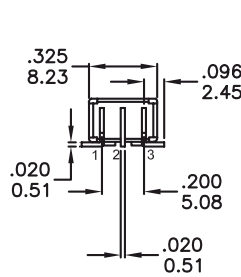
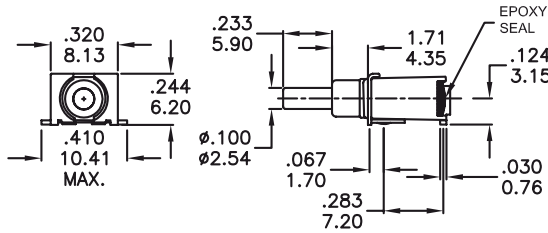


Pushbutton Switches

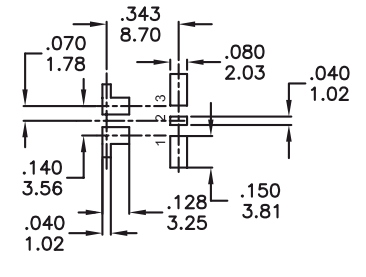
Sealed Sub-Miniature SMT Pushbutton Switches

PB64 Series


 UL versions available by request

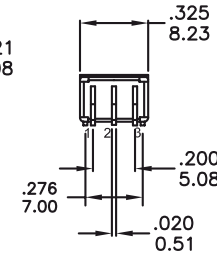
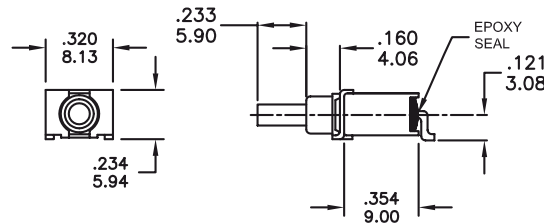


P.C. MOUNTING

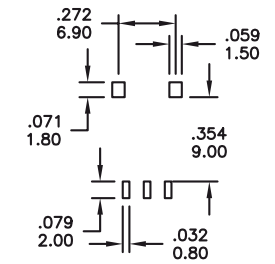


PB64S8TTAUEV


 UL versions available by request

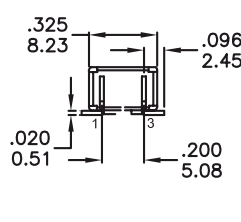
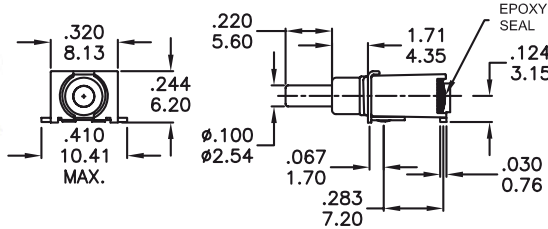


P.C. MOUNTING

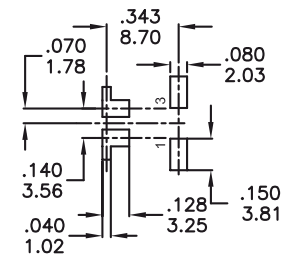


PB64S8TZAUEV


 UL versions available by request

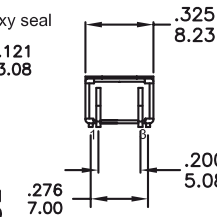
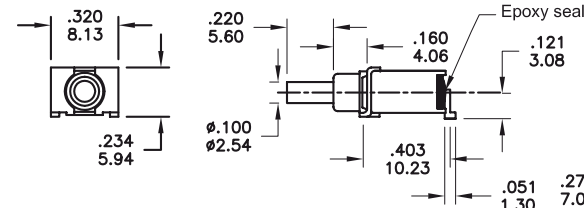


P.C. MOUNTING

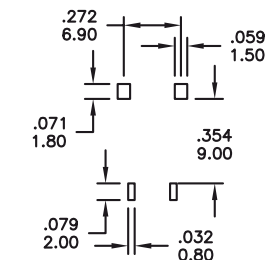


PB64S9TTAUEV

 UL versions available by request



P.C. MOUNTING



PB64S9TZAUEV

How to order:

PB64 1 2 3 4 5

- | | | | | |
|---|--|--|--------------------------------------|--|
| <p>1 POLES & CIRCUIT:</p> <p>S8 SP ON-MOM</p> <p>S9 SP OFF-MOM</p> | <p>2 TERMINALS:</p> <p>TT SMT Type (See drawing)</p> <p>TZ SMT Type 2 (See drawing)</p> | <p>3 CONTACT MATERIAL:</p> <p>AG Silver</p> <p>AU Gold</p> <p>UG Gold over Silver</p> | <p>4 SEAL:</p> <p>E Epoxy</p> | <p>5 ROHS & LEADFREE:</p> <p>V RoHS & Lead Free</p> |
|---|--|--|--------------------------------------|--|

General Specifications:

MATERIALS

- » Movable Contact & Fixed Terminals:
 - AG & UG : Silver plated over copper alloy
 - AU: Gold over nickel plated over copper alloy

MECHANICAL

- » Operating Temperature: -40°C to +85°C
- » Mechanical Life: 50,000 cycles at full load

CONTACT RATING

- » AG & UG: 5A 120VAC/28VDC; 2A 250VAC
- » AU: 0.4VA max. 20V max. (AC/DC)

ELECTRICAL

- » Contact Resistance: 20mΩ max. initial @ 2-4VDC
100mA for silver & gold plated contacts
- » Insulation Resistance: 1,000MΩ min.

All specifications are restricted to QA test criteria.
DRAW: D. L. JIN, CHK: D.F. LEE, APP: H.Z. QIU, DC: 2008-03-19, UPD: 2025-03-17.

Pushbutton Switches

Sealed Sub-Miniature SMT Pushbutton Switches

PB64 Series

SWITCH FUNCTION

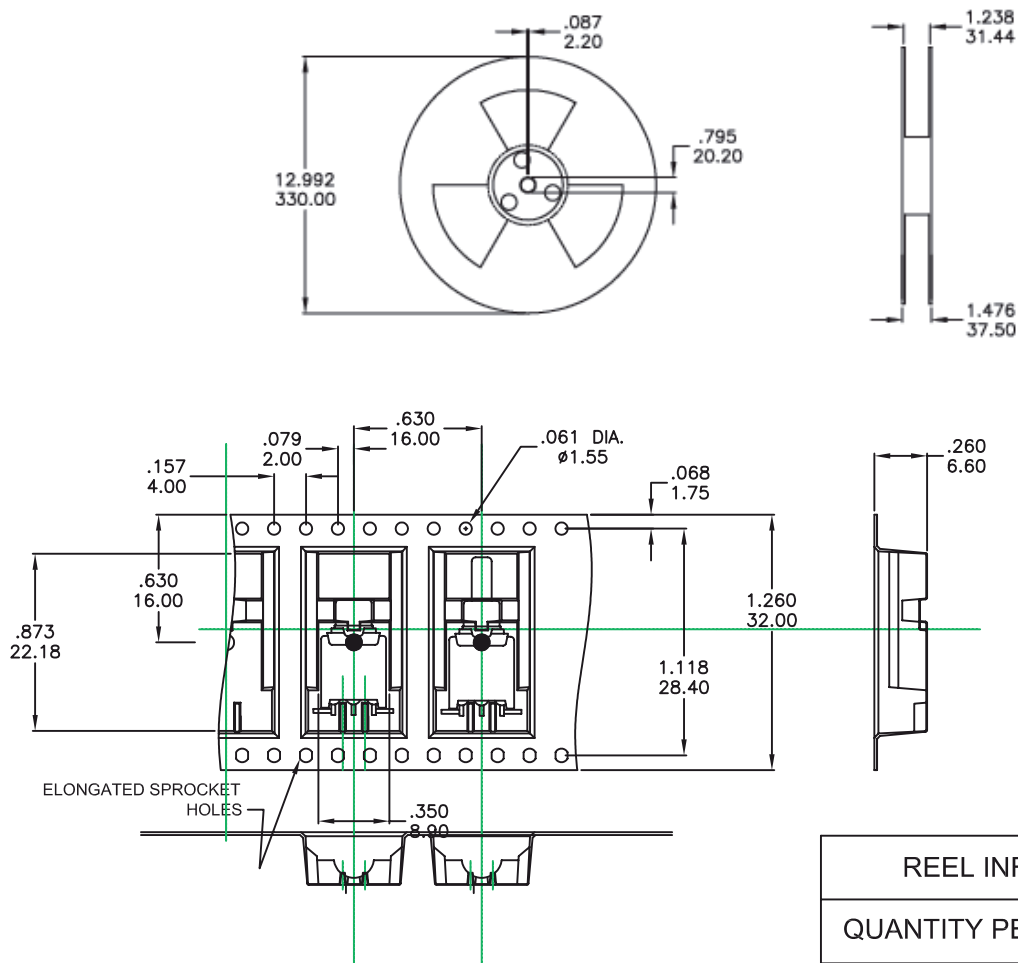
NO. POLES	MODEL NO.	SWITCH FUNCTION		CONNECTED TERMINALS		SCHEMATIC
		POS.1	POS.2	POS.1	POS.2	
SP	PB64S8	ON	MOM	2-1	2-3	
	PB64S9	OFF	MOM	OPEN	1-3	

MOM=MOMENTARY

PACKAGING

Switches available on embossed antistatic tape and reels.

Tape and cover strip are conductive for use near statically sensitive components.



REEL INFORMATION	
QUANTITY PER REEL	500