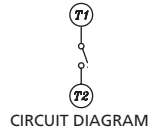
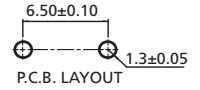
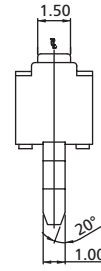
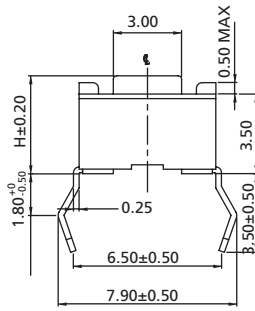
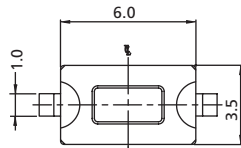
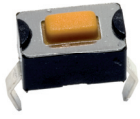


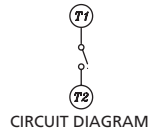
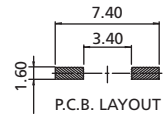
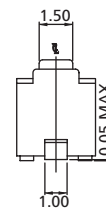
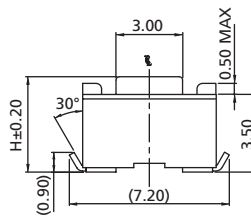
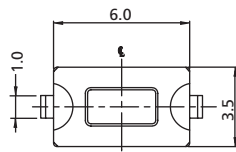
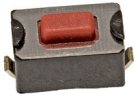
Tactile Switches

6 x 3.5 mm Tactile Switches

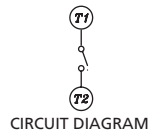
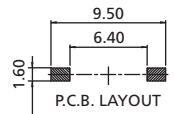
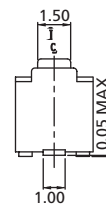
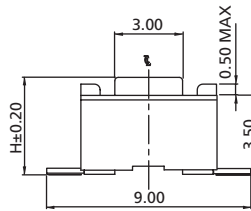
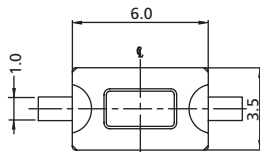
TP6 Series



TP6H Thru Hole Type



TP6B Surface Mounting Bending Type



TP6S Surface Mounting Type

How to order:

TP6

1 TYPE OF TERMINALS:

- H THT
- B SMT Bending
- S SMT Flat

2 DIMENSION H:

- 43 H = 4.3 mm
- 50 H = 5.0 mm

3 STEM COLOR / OPERATING FORCE:

- K Brown / 160±50 gf
- C Red / 260±50 gf
- B Salmon / 320±80 gf
- E Yellow / 520±130 gf

4 PACKAGE:

- BK Bag (TP6H Only)
- TB Tube
- TR Tape & Reel

General Tolerance: ± 0.2 mm

General Specifications:

FEATURES

- » Sharp click feel with a positive tactile feedback

MATERIALS

- » Contact Disc: Stainless steel with silver cladding
- » Terminal: Brass with silver plated

MECHANICAL

- » Stroke: 0.25 (+0.20/-0.10) mm
- » Operation Temperature: -25°C to +70°C
- » Storage Temperature: -30°C to +80°C

ELECTRICAL

- » Electrical Life: 50,000 cycles for 160gf & 320gf
30,000 cycles for 260gf & 520gf
- » Rating: 50mA, 12VDC
- » Contact Arrangement: 1 pole 1 throw

LEADFREE SOLDERING PROCESSES

- » Wave Soldering: Recommended solder temperature at 260°C max. 5 seconds subject to PCB 1.6mm thickness (for THT).
- » Reflow Soldering: When applying reflow soldering, the peak temperature or the reflow oven should be set to 260°C max. 10 seconds (for SMT).