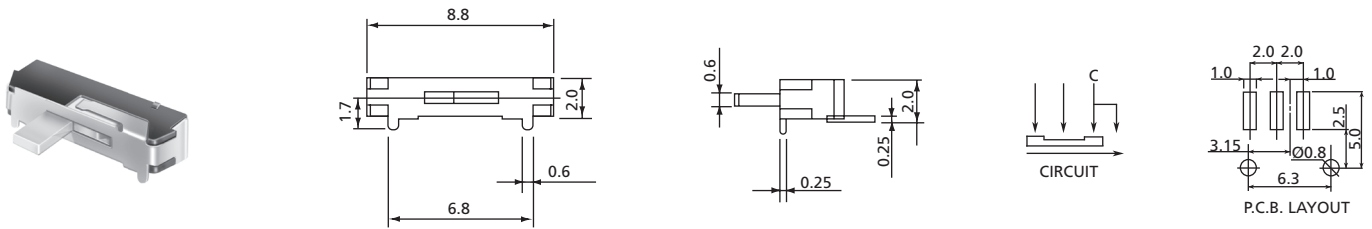


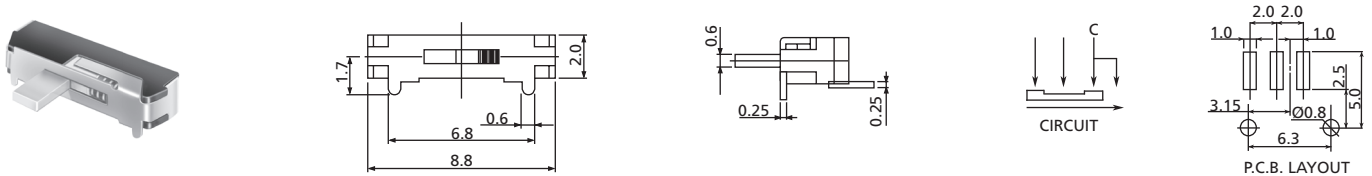
Slide Switches

8.8 mm Horizontal Slide Switches

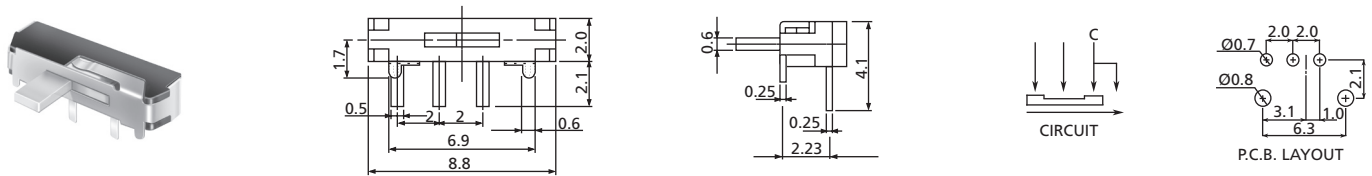
SB3 Series



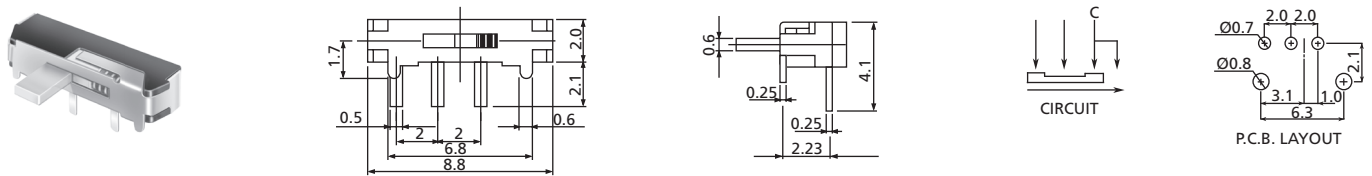
SB3SO SMT Terminals, without Spring Return



SB3SR SMT Terminals, with Spring Return



SB3HO THT Terminals, without Spring Return



SB3HR THT Terminals, with Spring Return

How to order:

SB3

1 TYPE OF TERMINAL:

- S SMT
- H THT

2 SPRING RETURN:

- O Without Spring Return
- R With Spring Return

3 EMBOSSING COVER:

- E With Embossing Cover (Standard)
- N Without Embossing Cover

4 PACKAGING:

- TR Tape & Reel (Only SB3S)

General Specifications:

Rating: DC6V 0.3A

Circuit: 1C-2P

Timing: Non-Shorting

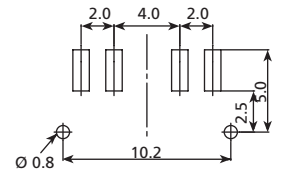
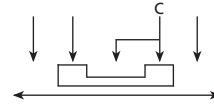
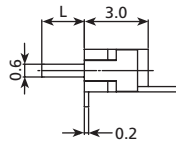
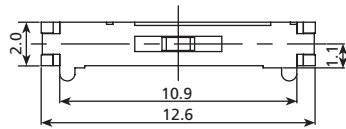
Travel: 2 ± 0.1 mm

Operating Force: 150 ± 100 gf

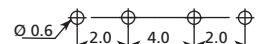
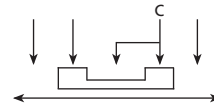
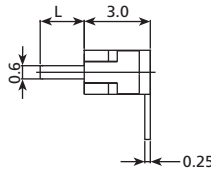
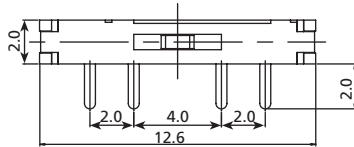
Slide Switches

12.6 mm Horizontal Side Switches

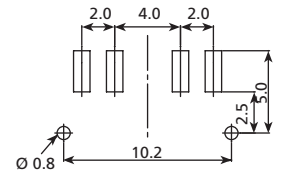
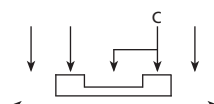
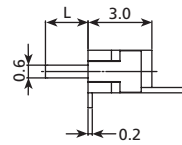
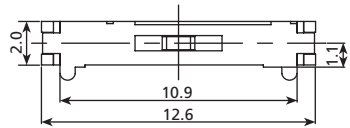
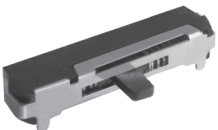
SB4 Series



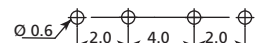
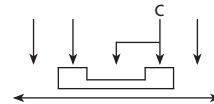
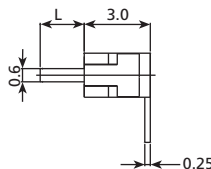
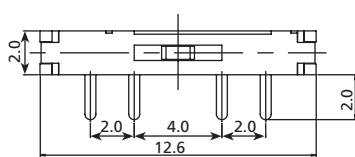
SB4S1 Surface Mounting Type Terminals



SB4H1 Thru Hole Type Terminals



SB4S2 Surface Mounting Terminals



SB4H2 Thru Hole Type Terminals

How to order:

SB4 ¹ ²

1 TYPE OF SLIDE SWITCH:

- S SMT Slide Switch
- H THT Slide Switch

2 OPERATING FORCE:

- 1 C-R: 250±100gf
L-C-R: 200±100gf
- 2 L-C-R: 200gf

L = Left; C = Centre; R = Right

General Specifications:

Rating: DC4V 0.3A

Circuit: 1C-3P

Timing: Non-Shorting

Travel: 2 mm

Operating Life: 10,000 Cycles