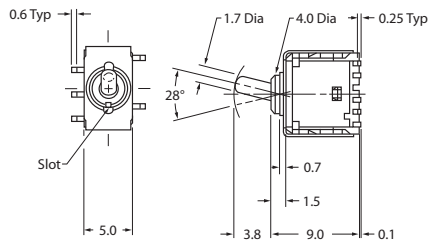
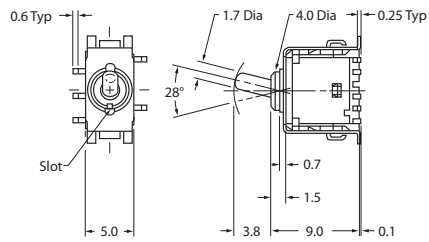
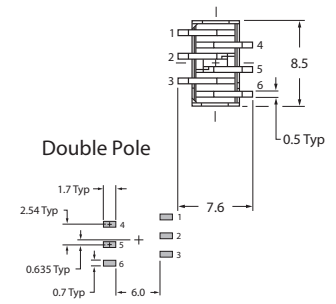
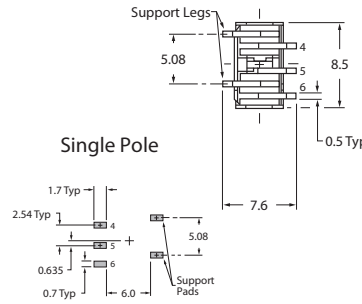


Ultra-Miniature SMT Toggle Switches

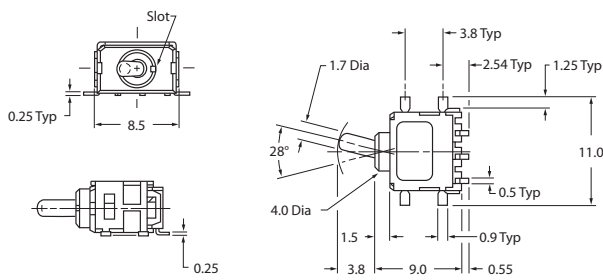
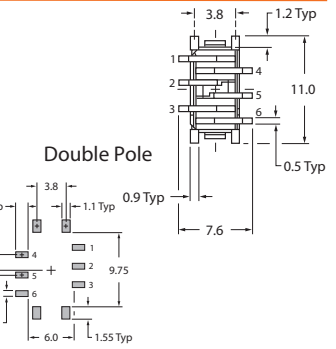
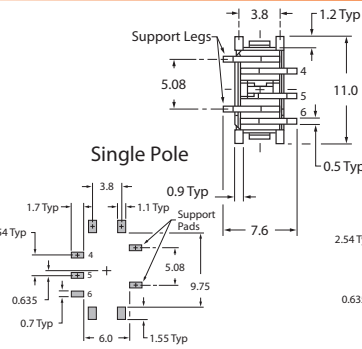
G3T Series



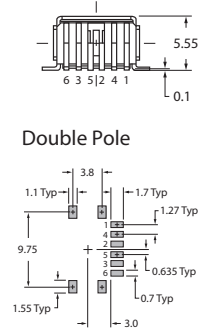
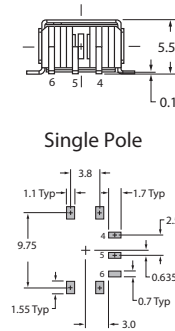
G3T12AP Upright Mounting



G3T22AB Upright Mounting with Bracket

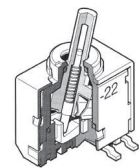


G3T12AH Right Angle Mounting



POLES & CIRCUITS		Toggle Position			Connected Terminals			Throw & Schematics
Pole	Model	Up 	Center 	Down 	Up 	Center 	Down 	Note: Terminal numbers are not actually on the switch
SP	G3T12	ON	NONE	ON	5-6	OPEN	5-4	SPDT
	G3T13	ON	OFF	ON				
	G3T15	ON	NONE	MOM				
	G3T18	MOM	OFF	MOM				
	G3T19	ON	OFF	MOM				
DP	G3T22	ON	NONE	ON	5-6 2-3	OPEN	5-4 2-1	DPDT
	G3T23	ON	OFF	ON				
	G3T25	ON	NONE	MOM				
	G3T28	MOM	OFF	MOM				
	G3T29	ON	OFF	MOM				

CUTAWAY



How to order:

G3T -

- 1** POLES:
1 SPDT
2 DPDT
- 2** CIRCUITS:
2 ON-NONE-ON
3 ON-OFF-ON
5 ON-NONE-MOM
8 MOM-OFF-MOM
9 ON-OFF-MOM
- 3** ACTUATOR:
A 3.8mm Column Toggle
- 4** TERMINALS:
P Gull Wing for Upright Mount
B Gull Wing for Upright with Bracket
H Gull Wing for Right Angle
- 5** PACKAGING:
R Tape-Reel for Right Angle Only
S Stick-Tube for Upright Mount
No Code Partitioned Tray for Upright & Right Angle; Any Quantity

General Specifications:

ELECTRICAL CAPACITY (Resistive Load)
 » Logic Level: 0.4VA max.@28V AC/DC max.
 (Applicable Range 0.1mA~0.1A@20mV~28V)

OTHER RATINGS:
 » Contact Resistance: 80m Ω max.
 » Insulation Resistance: 500M Ω min.@500VDC
 » Mechanical Life: 50,000 operations min.
 » Electrical Life: 50,000 operations min.
 » Normal Operating Force: 1.6N for momentary and 1.7N for maintained
 » Angle of Throw: 28°

MATERIALS
 » Contacts: Phosphor bronze with gold plating
 » Terminals: Phosphor bronze with gold plating

ENVIRONMENTAL DATA
 » Operating Temperature: -30°C through +85°C

PCB PROCESSING
 » Soldering: Reflow soldering recommended.
 Manual Soldering 4 sec. max. @ 410°C max.

SMT Switches