

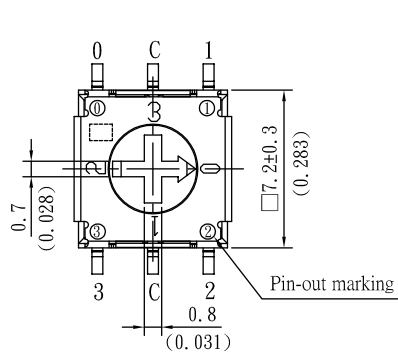
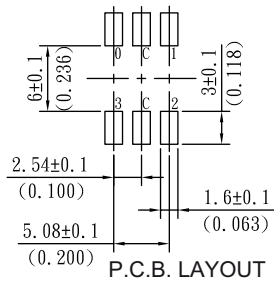
Rotary Switches

7mm Size Rotary Code Switch with 4 Positions

RD19 Series

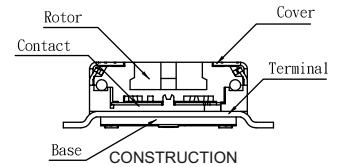
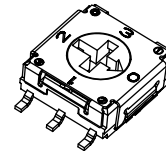
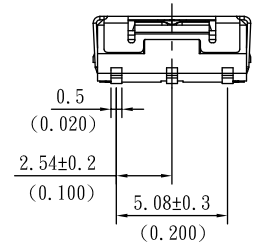
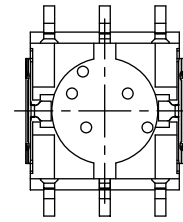
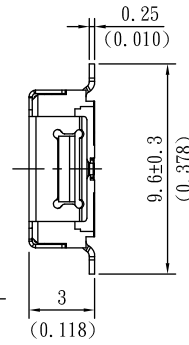


RD194ASMT...

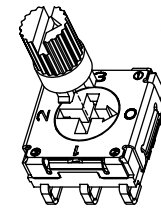
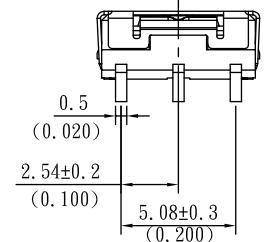
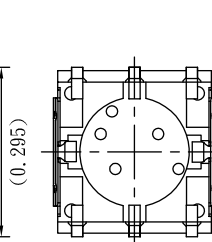
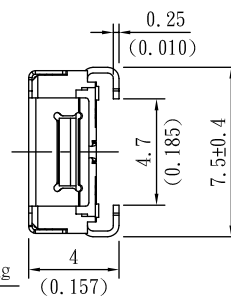
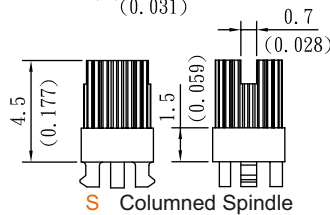
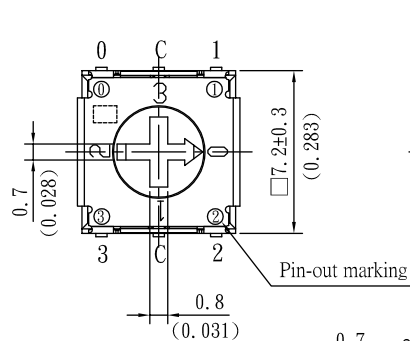
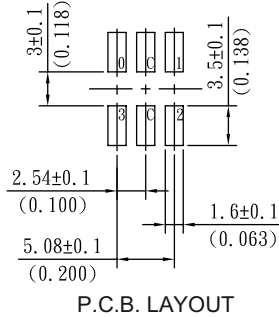


PIN NO	POSITION			
	0	1	2	3
0	●			
1		●		
2			●	
3				●

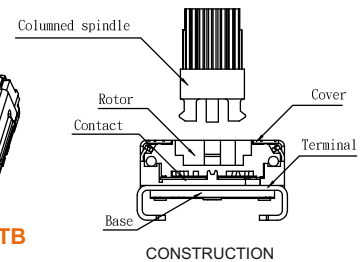
●.....Rotor color : white



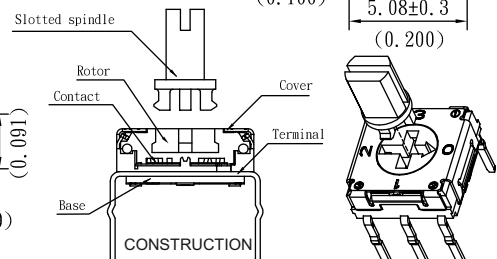
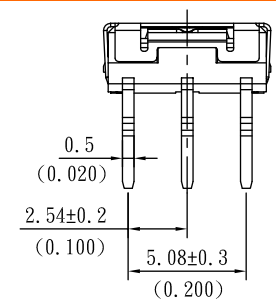
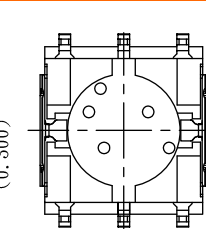
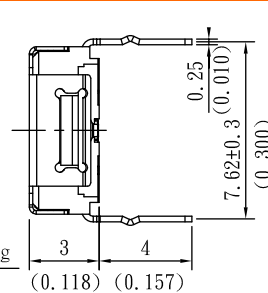
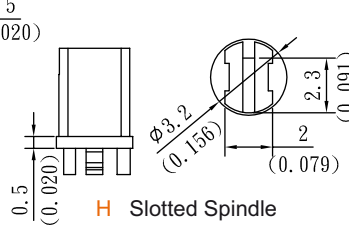
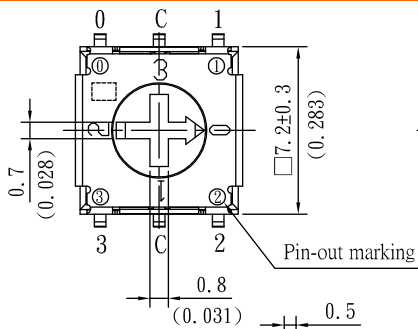
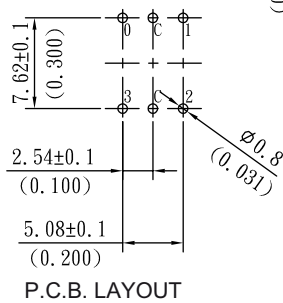
RD194ASMJ...



RD194SSMJTB

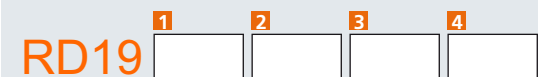


RD194ATHRTB



RD194ATHRTB

HOW TO ORDER:



Unit: mm(inch)
Tolerance:
±0.1 (0~1mm)
±0.3 (1~4mm)
±0.5 (4~16mm)

- | | |
|--|--|
| 1 NO. OF POSITIONS:
4 4 Positions (SP4T) | 3 TERMINALS TYPE:
THR Thru Hole Reflow (THR)
SMT SMT Gull Wing
SMJ SMT J-Hook |
| 2 ACTUATOR TYPE:
A Flat Cross Shaped Slot
S Columned Spindle
H Slotted Spindle | 4 PACKAGING TYPE:
TB Tube (70 pcs per Tube)
TR Tape & Reel (1,000 pcs per Reel) (only Flat and SMT/SMJ) |

SPECIFICATIONS:

- > Contact Rating: 100mA 5VDC (Max. switching load)
10µA 5VDC (Min. switching load)
- > Contact Resistance: 100 mOhms Max.
- > Insulation Resistance: 100 MOhms Min. at 100VDC
- > Dielectric Strength: 250VAC RMS 60 Seconds
- > Operating Force: 510 gf-cm Max.
- > Operating Life: 10,000 Detents Min.
- > Operating Temperature: -25°C~+85°C
- > Soldering Conditions: 260±5°C 5±1 Seconds (Solder Bath)
260°C Max. (Reflow Soldering)
- > Plating of Contact Area: Gold Plating
- > Plastic Materials: UL94V-0