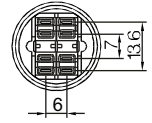
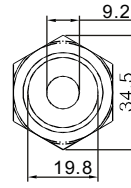
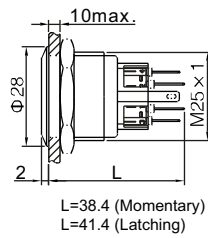


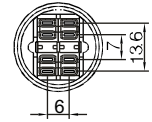
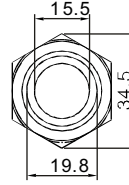
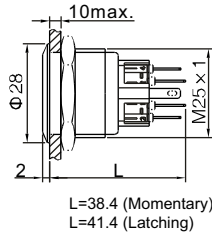
# Pushbutton Switches

Anti-Vandal Pushbutton Switch - Mounting Hole Ø25mm

PAV25 Series



PAV25D...1... Dot illuminated; 2NO2NC



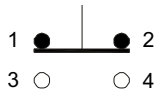
PAV25D...2... Ring illuminated; 2NO2NC

## LAMP RATINGS

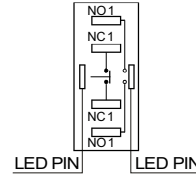
Lamp Type	LED Lamp AC/DC *			Lamp Circuit Diagram
	AC/DC6V	AC/DC12V	AC/DC110V	
Rated Voltage	AC/DC24V	AC/DC36V	AC/DC220V	<p>Using AC/DC LED lamp, the terminals have not difference of anode and cathode; Using inner resistance, don't need to connect outer resistance.</p>
Rated Amper	about 15mA		about 5mA	
LED Colors	red, green, yellow, orange, blue, white			
Life	40,000 hours (reference)			

\* DC LED and other voltages can be made by request.

## SWITCHING



## DIAGRAM OF TERMINATION



The second and third switch unit are the same.

## HOW TO ORDER:

PAV25

### 1 CONTACT:

- S 1NO1NC
- D 2NO2NC

### 2 OPERATING MODE:

- M Momentary
- L Latching

### 3 TERMINATION:

- S Solder Lug 2.8x0.5mm

### 4 ILLUMINATION:

- 0 No Illumination
- 1 Dot Type Illumination
- 2 Ring Type Illumination

### 5 LED COLOR:

- N No Illumination
- C Red      F Green      E Yellow
- D Orange   G Blue      B White

### 6 LED VOLTAGE:

- 0 No Illumination
- 6 AC/DC 6V
- 12 AC/DC 12V
- 24 AC/DC 24V
- 110 AC/DC 110V
- 220 AC/DC 220V  
(Other Voltage can be made by request)

### 7 ENGRAVING:

- A Stop
  - B Start
  - C Return
  - D Reset
  - E Vertical bar
  - F Double vertical bar
  - G Left arrow
  - H Up arrow
  - J Square
  - K Power
  - L Light bulb
  - M Bell
  - N Circle
- (Other engraving can be made by request)

## SPECIFICATIONS:

### CHARACTERISTICS

- > Protection Degree: IP65 (for surface of the panel)
- > Anti Vandal Degree: IK10
- > Front Shape: Flat round
- > Switch Rating: 5A 250VAC Max.
- > Contact Resistance: 50mΩ Max.
- > Insulation Resistance: 1000MΩ Min.
- > Dielectric Intensity: 2000VAC
- > Operating Temperature: -20°C to +55°C
- > Mechanical Life: 1,000,000 cycles
- > Electrical Life: 50,000 cycles
- > Panel Thickness: 1 to 10 mm
- > Torque: 5 to 14 Nm
- > Operation Pressure: 5.5 to 7 N
- > Operation Distance: about 2.8mm

### MATERIAL

- > Contact: Silver alloy
- > Button: Stainless steel
- > Body: Stainless steel
- > Base: PA