

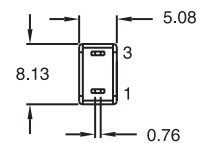
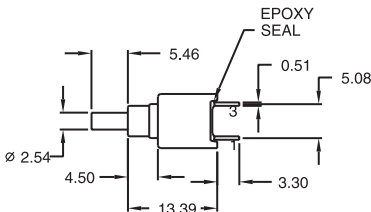
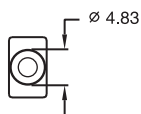
Pushbutton Switches

Sealed Sub-Miniature Pushbutton Switches

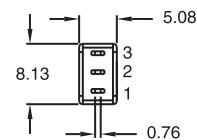
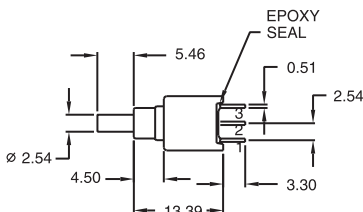
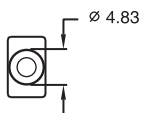
PB4 Series



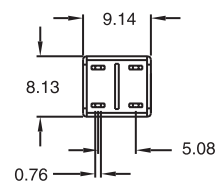
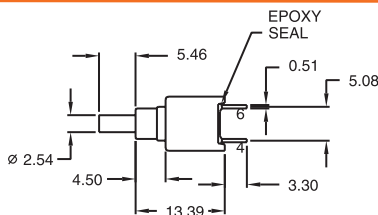
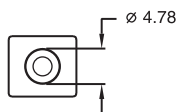
PB4SFT2



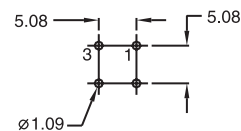
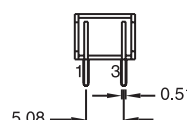
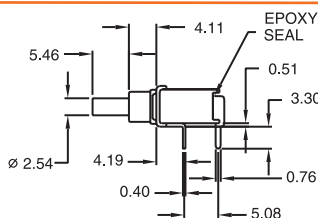
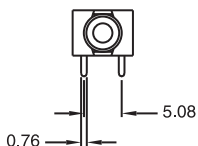
PB4SNT2



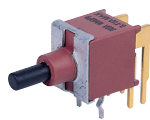
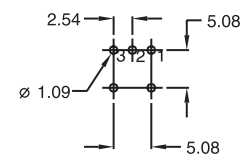
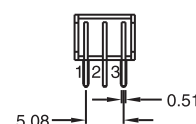
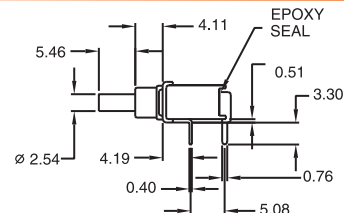
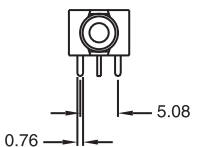
PB4DFT2



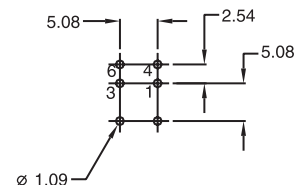
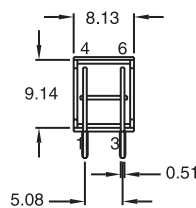
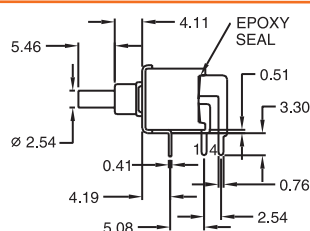
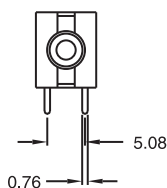
PB4SFT6



PB4SNT6



PB4DFT6



How to order:

PB4

1 POLES & SWITCHING:
SN SP ON-MOM
SF SP OFF-MOM
DF DP OFF-MOM

2 TERMINALS:
T1 Solder Lug
T2 PC thru-hole
T5 Wire wrap
T6 Right angle, PC thru-hole
T6N Right angle, snap-in, PC thru hole
T7 Vertical right angle, PC thru hole
T7N Vertical right angle, snap-in, PC thru-hole
VS2 9.30 mm high, V-bracket
V2N 9.30 mm high, snap-in V-bracket

3 CONTACT MATERIAL:
AG Silver
AU Gold
UT Gold, tin-lead
GT Silver, tin-lead
UG Gold over silver
UGT Gold over silver, tin-lead

4 SEAL:
E Epoxy (Standard)

5 ROHS & LEAD FREE:
blank RoHS compliant
V RoHS & lead free

6 CAP:
C2 Cap2
C5 Cap5

7 CAP COLOR:
A Black (Standard)
B White
C Red
D Orange
E Yellow
F Green
G Blue
K Brown
H Gray

General Specifications:

MATERIALS

» Movable Contact & Fixed Terminals:
 AG, GT, UG & UGT: Silver plated over copper alloy
 AU & UT: Gold over nickel plated over copper alloy

MECHANICAL

» Operating Temperature: -30°C to +85°C
 » Mechanical Life: 50,000 cycles at full load

CONTACT RATING

» AG, GT, UG & UGT: 3A 120VAC/28VDC
 1A 250VAC
 » AU & UT: 0.4VA max. 20V max. (AC/DC)

ELECTRICAL

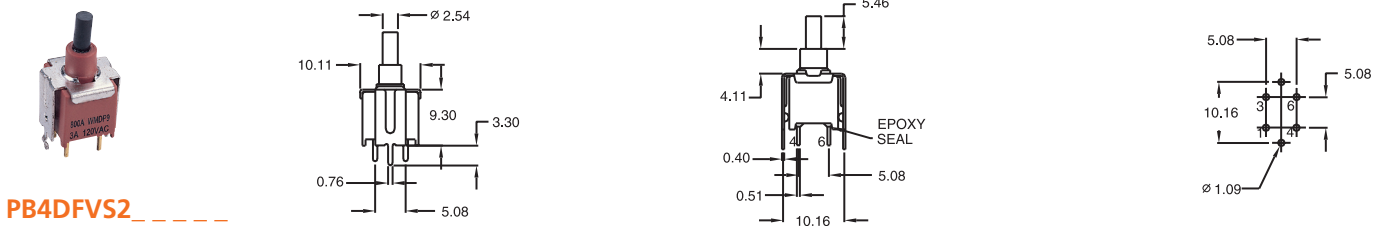
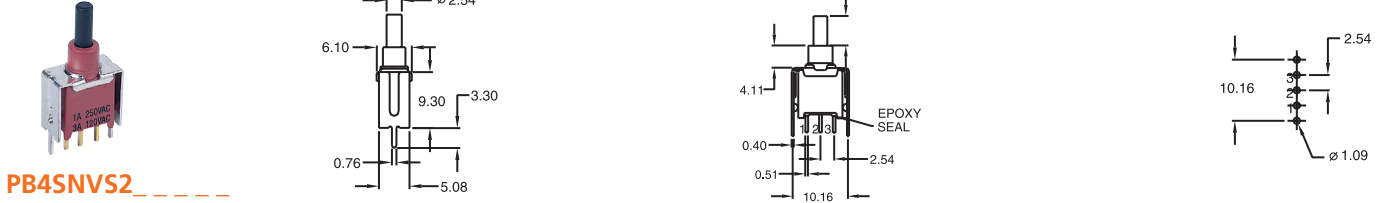
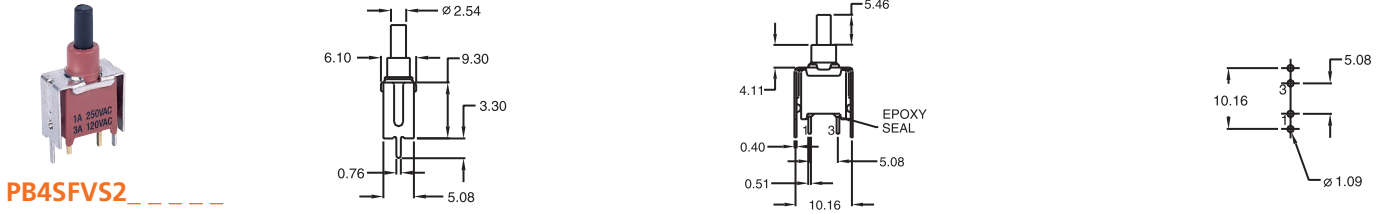
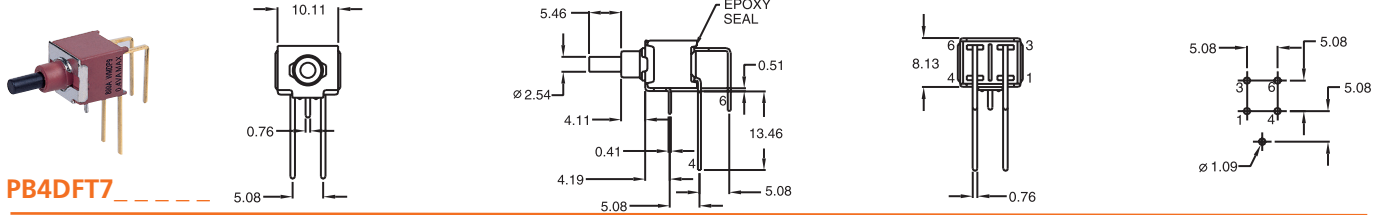
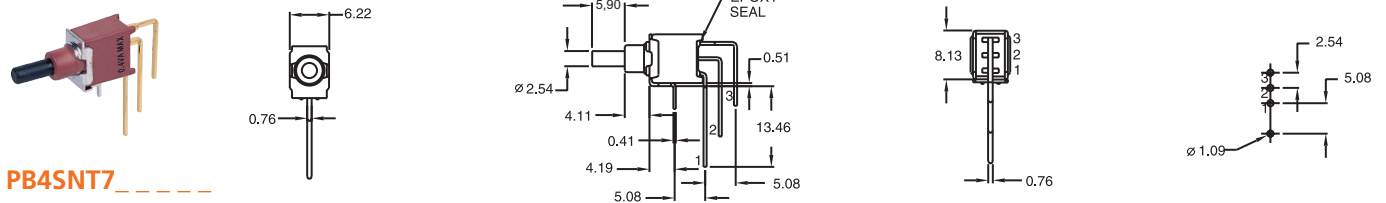
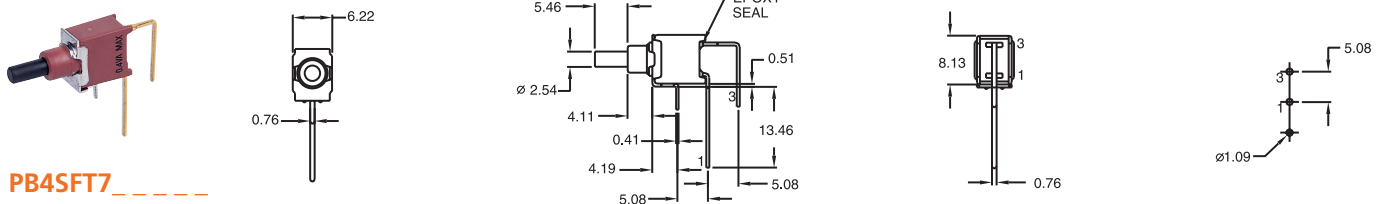
» Contact Resistance: 20mΩ max. initial @ 2-4VDC
 100mA for silver & gold plated contacts
 » Insulation Resistance: 1,000MΩ min.

Pushbutton Switches

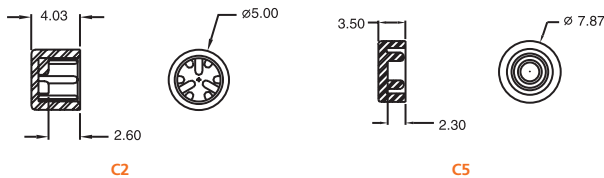
Sealed Sub-Miniature Pushbutton Switches

PB4 Series

Pushbutton Switches



CAPS (Colors: white, black, green, red)

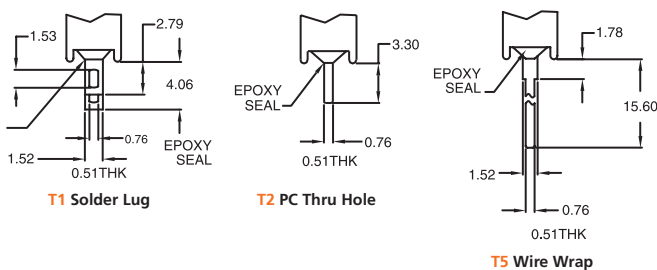


SWITCH FUNCTION

NO. POLES	MODEL NO.	SWITCH FUNCTION		CONNECTED TERMINALS		SCHEMATIC
		POS.1	POS.2	POS.1	POS.2	
SP	PB4SN	ON	MOM	▲	▲	
	PB4SF	OFF	MOM	○	○	
DP	PB4DF	OFF	MOM	○	○	

MOM=MENTORARY

TERMINAL OPTIONS



SNAP-IN TERMINAL OPTIONS

