

# Pushbutton Switches

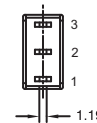
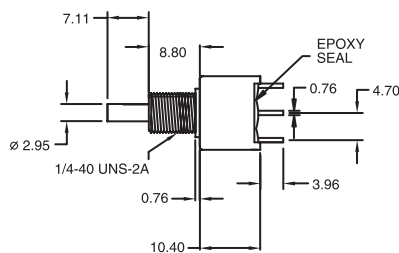
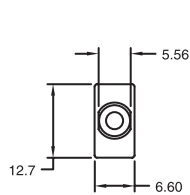
## Sealed Snap-Acting Pushbutton Switches

## PB2 Series

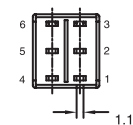
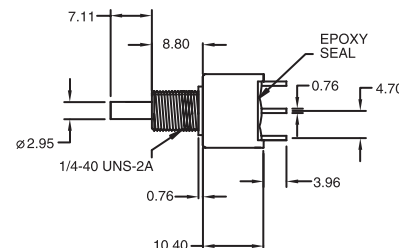
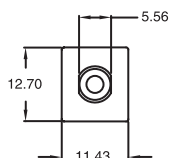
Pushbutton Switches



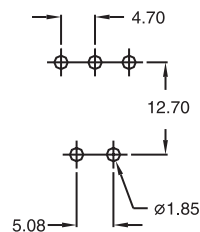
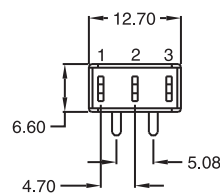
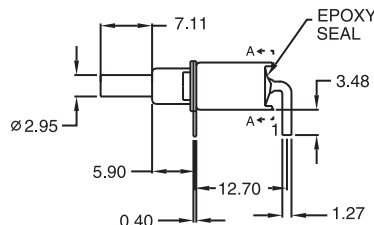
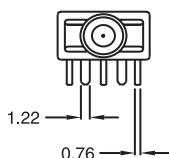
**PB2MSB10T1**



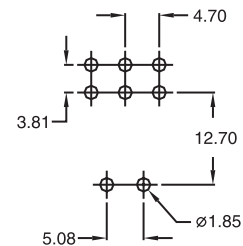
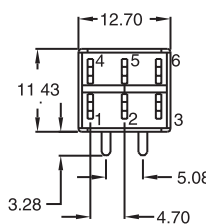
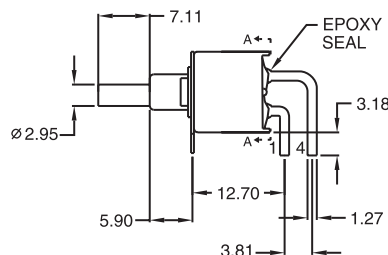
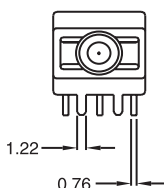
**PB2MDB10T1**



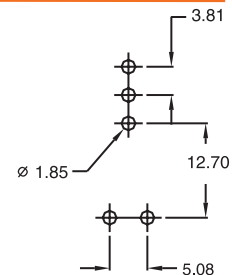
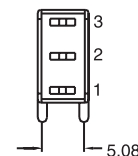
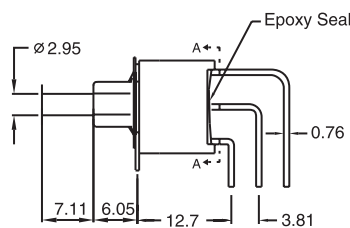
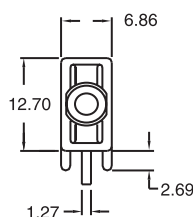
**PB2MSB40T6**



**PB2MDB40T6**



**PB2MSB40T7**



### How to order:

**PB2**

**1 SWITCHING & POLES:**  
**M5** ON-MOM SPDT  
**MD** ON-MOM DPDT

**2 BUSHING:**  
**B10** 8.80 mm high  
**B20** 8.80 mm high  
**B40** 6.10 mm high

**3 TERMINALS:**  
**T1** Solder Lug  
**T2** PC thru-hole  
**T5** Wire wrap  
**T6** Right angle, PC thru-hole  
**T6N** Right angle, snap-in, PC thru hole  
**T7** Vertical right angle, PC thru hole  
**T7N** Vertical right angle, snap-in, PC thru hole

**V52** 11.68 mm high, V-bracket  
**V2N** 11.68 mm high, snap-in V-bracket  
**V53** 16.00 mm high, V-bracket

**4 CONTACT MATERIAL:**  
**AG** Silver  
**AU** Gold  
**UT** Gold, tin-lead  
**GT** Silver, tin-lead  
**UG** Gold over silver  
**UGT** Gold over silver, tin-lead

**5 SEAL:**  
**E** Epoxy (Standard)

**6 ROHS & LEAD FREE:**  
**blank** RoHS compliant  
**V** RoHS & lead free

**7 CAP:**  
**C1** Cap1  
**C2** Cap2  
**C3** Cap3  
**C4** Cap4

**8 CAP COLOR:**  
**A** Black (Standard)  
**B** White  
**C** Red  
**D** Orange  
**E** Yellow  
**F** Green  
**G** Blue  
**K** Brown  
**H** Gray

### General Specifications:

#### MATERIALS

» Movable Contact & Fixed Terminals:  
 AG, GT, UG & UGT: Silver plated over copper alloy  
 AU & UT: Gold over nickel plated over copper alloy

#### MECHANICAL

» Operating Temperature: -30°C to +85°C  
 » Mechanical Life: 50,000 cycles at full load  
 » Cap Installation Force: 10 lbs, max. permissible

#### CONTACT RATING

» AG, GT, UG & UGT: 3A 120VAC/28VDC  
 1A 250VAC  
 » AU & UT: 0.4VA max. 20V max. (AC/DC)

#### ELECTRICAL

» Contact Resistance: 20mΩ max. initial @ 2-4VDC  
 100mA for silver & gold plated contacts  
 » Insulation Resistance: 1,000MΩ min.

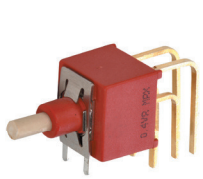
All specifications are restricted to QA test criteria.  
 DRW: D.L. JIN, CHK: D.F. LEE, APP: H.Z. QIU

# Pushbutton Switches

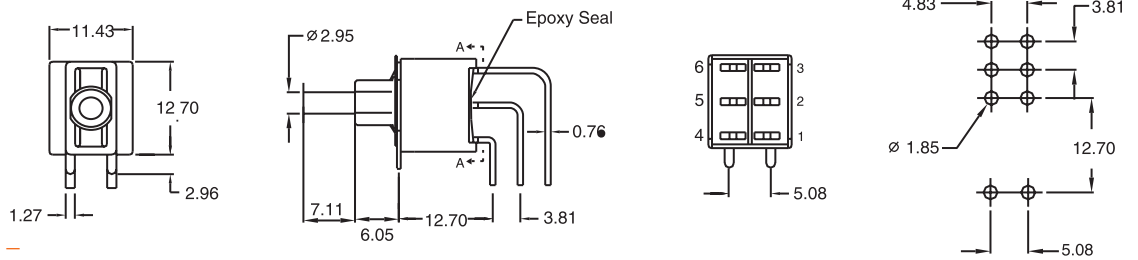
## Sealed Snap-Acting Pushbutton Switches

## PB2 Series

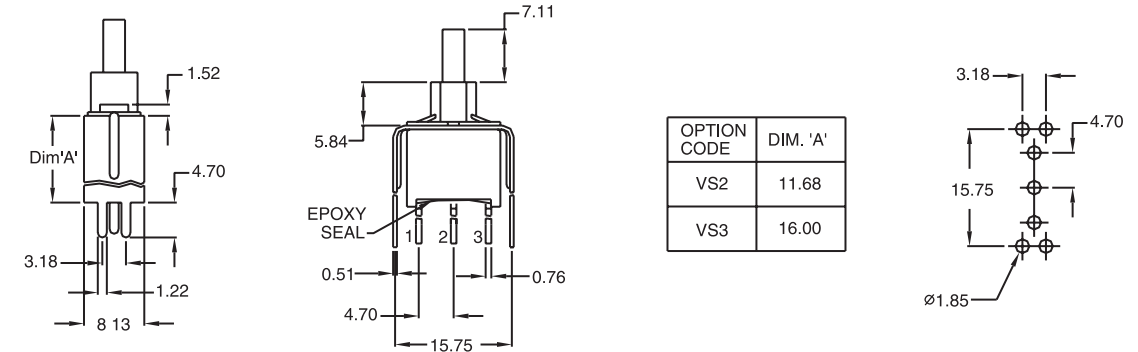
Pushbutton Switches



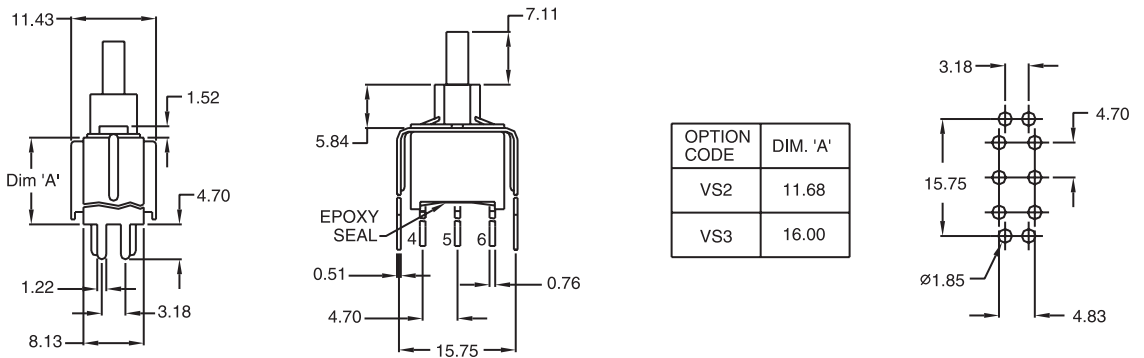
**PB2MDB40T7**



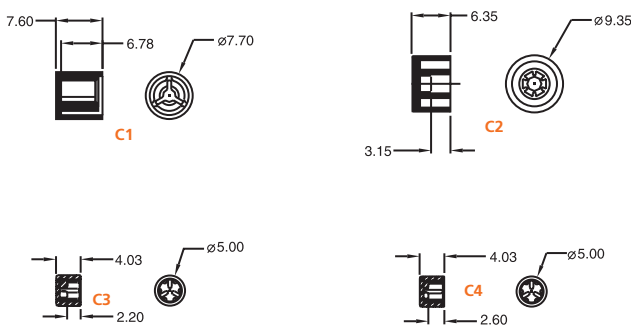
**PB2MSB40VS2**



**PB2MDB40VS2**



### CAPS (Colors: white, black, green, red)

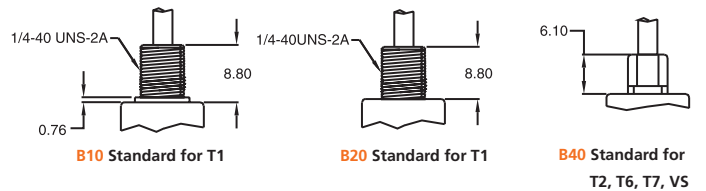


### SWITCH FUNCTION

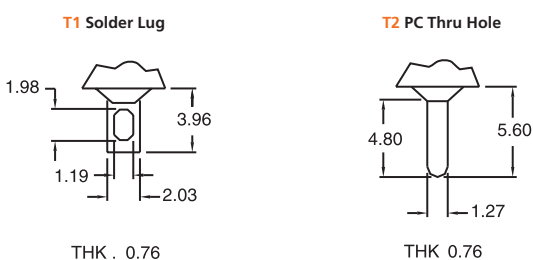
NO. POLES	MODEL NO.	SWITCH FUNCTION		CONNECTED TERMINALS		SCHEMATIC
		POS.1	POS.2	POS.1	POS.2	
SP	PB2MS	ON	MOM	1-3	1-2	
DP	PB2MD	ON	MOM	1-3,4-6	1-2,4-5	

MOM=MOMENTARY

### BUSHING OPTIONS



### TERMINAL OPTIONS



### SNAP-IN TERMINAL OPTIONS

