

# Pushbutton Switches

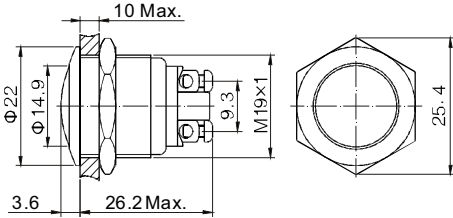
Anti-Vandal Pushbutton Switch - Mounting Hole Ø19mm

PAV19A Series



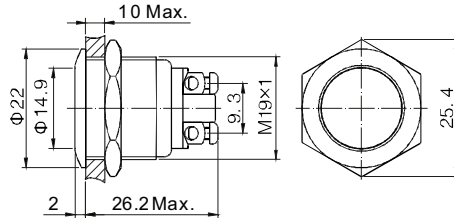
Terminal Type: Screw Terminal  
Front Shape: Domed

PAV19ANDW0N



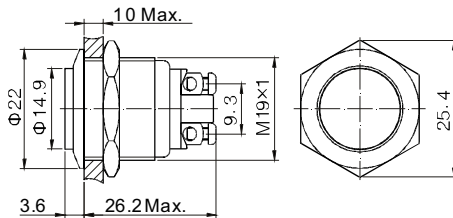
Terminal Type: Screw Terminal  
Front Shape: Flat Round

PAV19ANFW0N



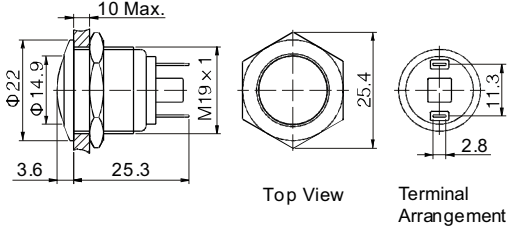
Terminal Type: Screw Terminal  
Front Shape: High Round

PAV19ANHW0N



Terminal Type: Solder Lug 2.8x0.5mm  
Front Shape: Domed

PAV19ANDS0N

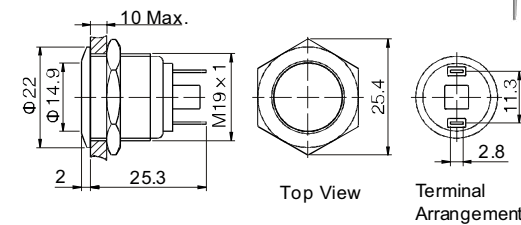


Top View Terminal Arrangement



Terminal Type: Solder Lug 2.8x0.5mm  
Front Shape: Flat Round

PAV19ANFS0N

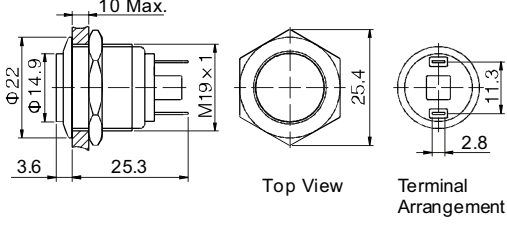


Top View Terminal Arrangement



Terminal Type: Solder Lug 2.8x0.5mm  
Front Shape: High Round

PAV19ANHS0N



Top View Terminal Arrangement

## HOW TO ORDER:

PAV19A

### 1 SWITCHING CIRCUIT:

- N 1NO (Standard)
- C 1NC (Made by request)

### 2 FRONT SHAPE:

- D Domed
- F Flat Round
- H High Round

### 3 TERMINATION:

- W Screw Terminal
- S Solder Lug (2.8x0.5mm)

### 4 ILLUMINATION:

- 0 No Illumination

### 5 CRUST MATERIAL\*:

- No Code Stainless Steel
- NK Nickel-plated Brass Crust
- AU Gold-plated Brass Crust
- BA Black anodized \*\*

### 6 ENGRAVING:

- A Stop
- B Start
- C Return
- D Reset
- E |
- F ||
- G ◀
- H ↑
- J ■
- K ⏻
- L ⚡
- M 🔔
- N ○



PAV19A\_DS0BAN  
black anodized

(Other engraving can be made by request)

## SPECIFICATIONS:

### CHARACTERISTICS

- > Protection Degree: IP65
- > Anti Vandal Degree: IK09
- > Switch Rating: 2A 36VDC
- > Operation Type: Momentary
- > Contact Configuration: 1NO or 1NC
- > Contact Resistance: 50mohm Min.
- > Insulation Resistance: 1000Mohm Min.
- > Dielectric Intensity: 2000VAC
- > Operating Temperature: -20°C to +55°C
- > Mechanical Life: 1,000,000 cycles
- > Electrical Life: 200,000 cycles
- > Panel Thickness: 1 to 10 mm
- > Torque: 5 to 14 Nm
- > Operation Pressure: about 4 N
- > Operation Travel: about 1.8mm
- > Switching: Double-Break Slow-Motion Contact

### MATERIAL

- > Contact: Silver alloy
- > Button: Stainless steel / Brass (Nickel plated, Gold plated)
- > Body: Stainless steel / Brass (Nickel plated, Gold plated)
- > Base: PBT

All specifications are restricted to QA test criteria.  
DC: 20101102.MD: D.HUA APP: D.XUJE \* Revised 2011-05-05 \*\* Revised 2012-03-16 Layout-Update (20120426)  
UPDATE 2012-10-04: Added PIC Black anodized. UPD: 2013-07-08