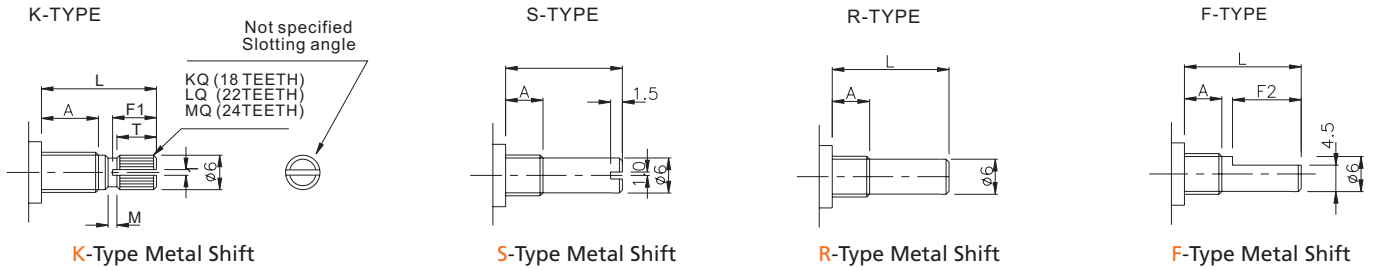


Potentiometers

Additional Informations for GPV16A & GPV16B Series

METAL SHIFT



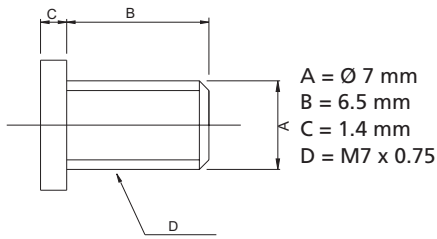
A: 5 mm

Shaft Type	L	15	20	25	30
K	F1	6.5	11	14	14
	T	6	10	12	12
	M	1	2	4	4
F	F2	7	12	14	14
R, S	L	15	20	25	30

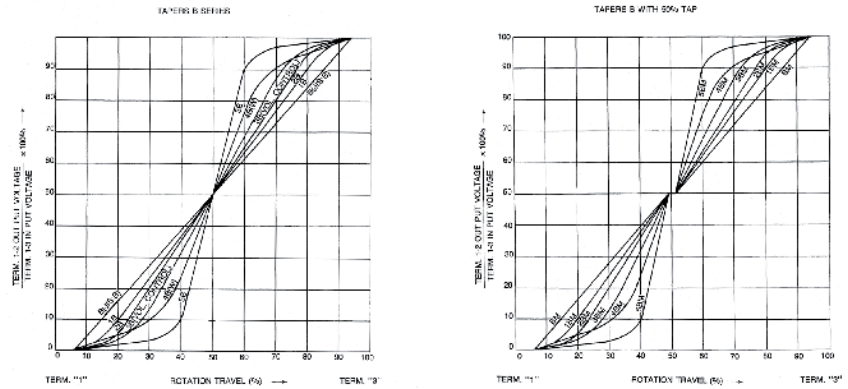
A: 6.5 mm

Shaft Type	L	15	20	25	30
K	F1	6.5	11	14	14
	T	6	10	12	12
	M	1	2	4	4
F	F2	7	12	14	14
R, S	L	15	20	25	30

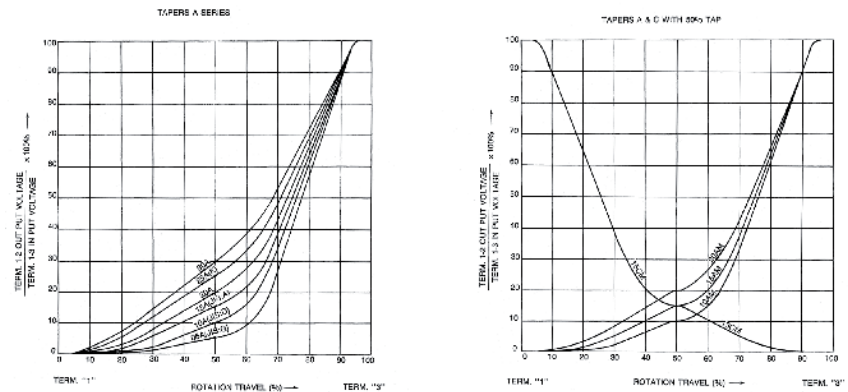
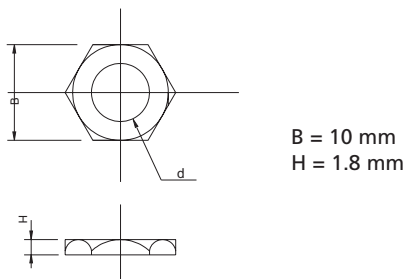
NUT (M7x0.75)



STANDARD RESISTANCE TAPER



NUT (M7x0.75)



WASHER (M7)

