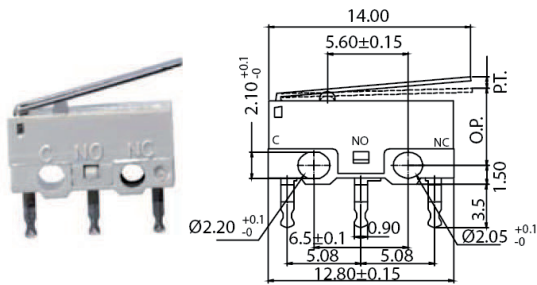


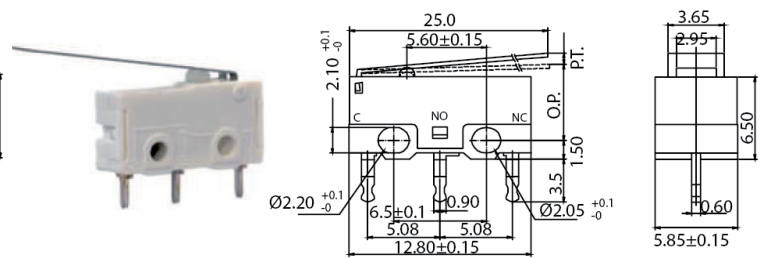
# Micro Switches

## Miniature SP Micro Switches

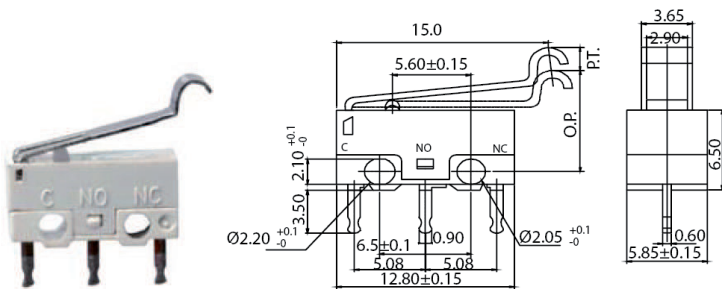
## MP1 Series



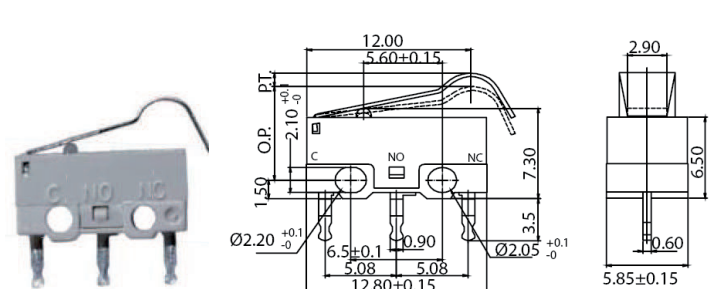
MP1\_H01\_ Lever Length = 14 mm



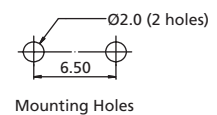
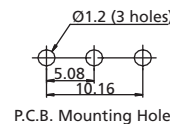
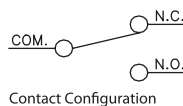
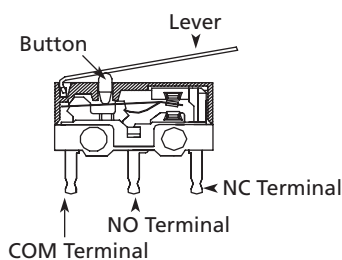
MP1\_H02\_ Lever Length = 25 mm



MP1\_H04\_ Simulated Level 1



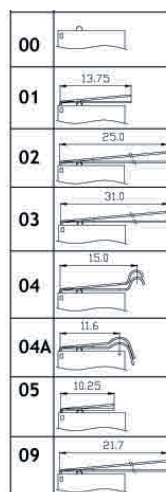
MP1\_H04A\_ Simulated Level 2



### How to order:

MP1

- |                                       |                                      |
|---------------------------------------|--------------------------------------|
| <b>1</b> CURRENT RATING:              | <b>4</b> HINGED TYPE (See drawings): |
| R1 0.1A 5VDC                          | 00 Pin Plunger                       |
| R2 1A 125VAC                          | 01 Lever Length=13.75mm              |
| R3 3A 125VAC                          | 02 Lever Length=25mm                 |
| <b>2</b> CLOTHED MATERIAL:            | 03 Lever Length=31mm                 |
| AG Silver (Standard)                  | 04 Simulated Lever 15mm              |
| AU Gold                               | 04A Simulated Lever 11.6mm           |
| <b>3</b> TERMINAL                     | 05 Lever Length=10.25mm              |
| H P.C.B. Terminal Straight (Standard) | 09 Lever Length=21.7mm               |
| LA P.C.B. Terminal Left Angle         | <b>5</b> OPERATING FORCE             |
| RA P.C.B. Terminal Right Angle        | N Standard                           |
|                                       | L Low                                |



### General Specifications:

- FEATURES**
- » SP Micro Switch
  - » Long Life Be-Cu spring mechanism
  - » Large over travel
  - » Small compact size
  - » Insert molding in the contact prevent flux build-up during soldering and permits auto dipping
- MATERIAL**
- » Stationary Contact: Silver (3A)  
Brass+Ag (1A & 0.1A)
  - » Movable Contact: Silver
  - » Terminals: Brass+Ag
  - » Actuating Spring: Ti-Cu
- MECHANICAL**
- » Type of Actuation: Momentary
  - » Mechanical Life: 300,000 operations min.
  - » Operating Temperature: -25°C to +105°C
- ELECTRICAL**
- » Electrical Life: 10,000 operations min.
  - » Initial Contact Resistance: 50mΩ max.
  - » Insulation Resistance: 100MΩ min.

All specifications are restricted to QA test criteria.  
DRW: G.L. FENG CHK: H. CHEN APP: D. GU DC: 20050902 UPD: 20111105

Micro Switches