

Detector Switches

Vertical Type Detector Switches

DF25 Series

General Specifications

MATERIALS

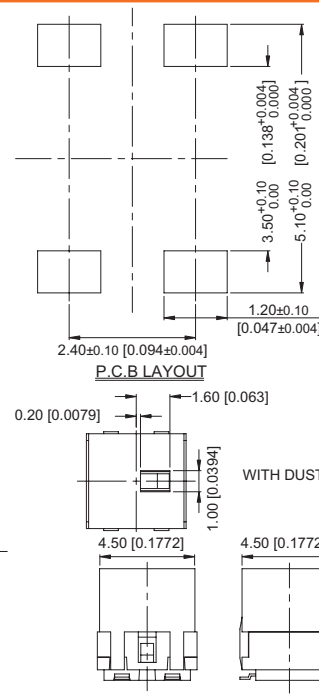
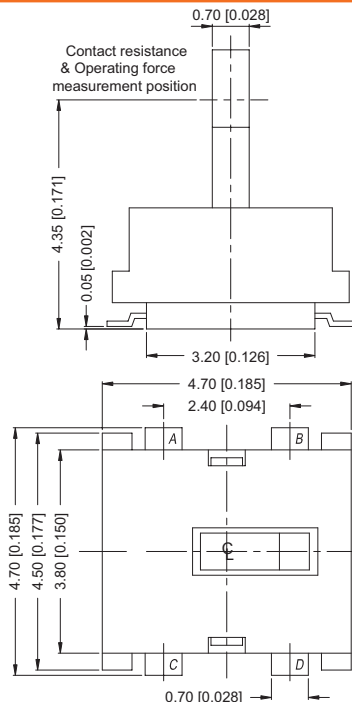
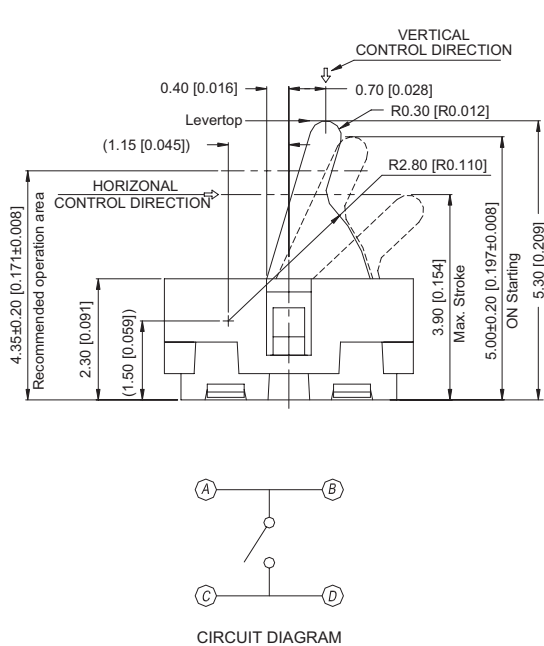
- » Cover : LCP High-Temp. Thermoplastic black
- » Contact : Stainless with silver cladding
- » Terminal : Brass, Silver plating
- » Base : PA9T High-Temp. Thermoplastic black
- » Stem : LCP High-Temp. Thermoplastic black

MECHANICAL

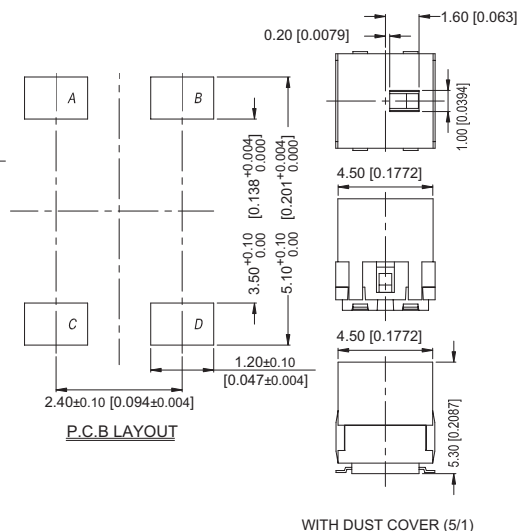
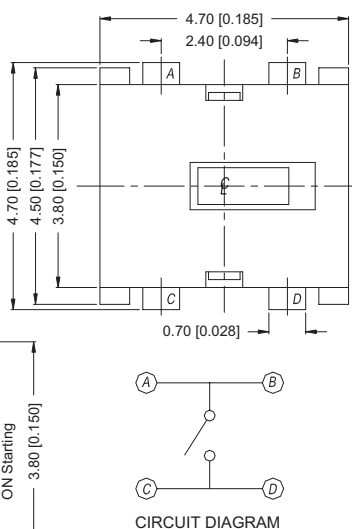
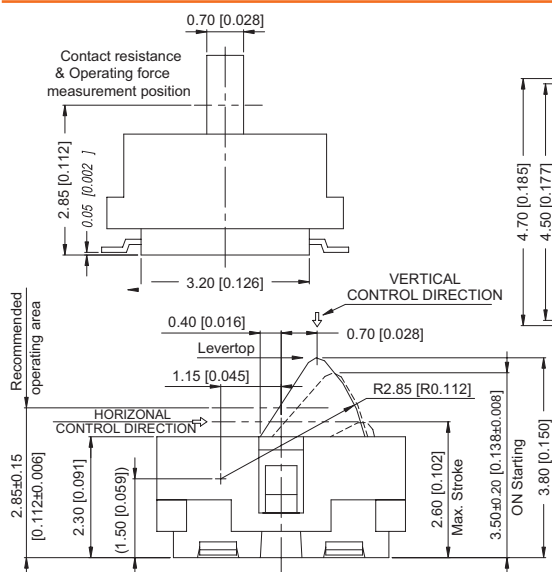
- » Operation Force: 40gf max.
- » Stroke : 3.90mm max. (Stem Height 5.30mm)
2.60mm max. (Stem Height 3.80mm)
- » Operation Temperature : -10°C to +60°C
- » Storage Temperature : -20°C to +70°C

ELECTRICAL

- » Electrical Life : 100,000 cycles
- » Rating : 1mA, 5VDC
- » Dielectric Strength : 100 VAC / 1 minute.
- » Contact Resistance : 1Ω Max.
- » Insulation Resistance : 100 MΩ Min. 100V DC
- » Rate of Operation : 20~25 operation per minute

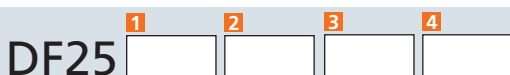


DF25N53C...



DF25N38C...

How to order:



- | | | | |
|----------------|-----------------------|----------------------|-------------------------|
| 1 POST: | 2 STEM HEIGHT: | 3 DUST COVER | 4 PACKAGE STYLE: |
| N Without Post | 53 5.30mm | N Without Dust Cover | TR Tape & Reel |
| P With Post | 38 3.80mm | C With Dust Cover | |

General Tolerance:±0.2mm

