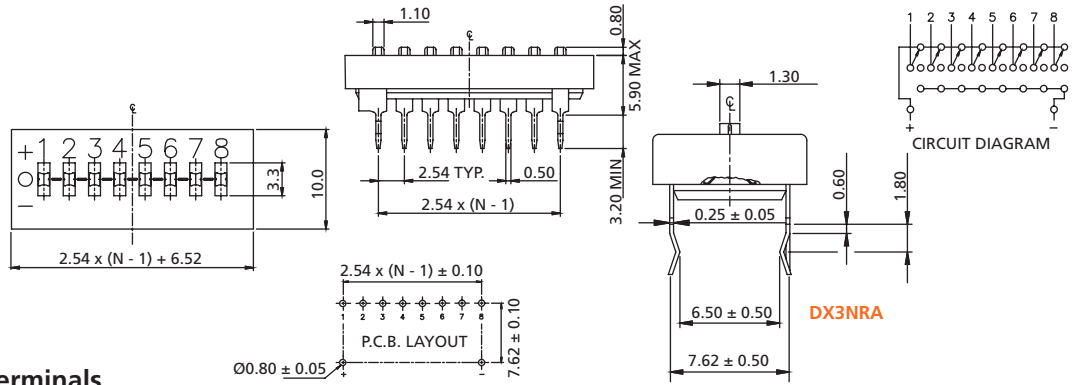
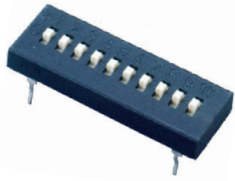


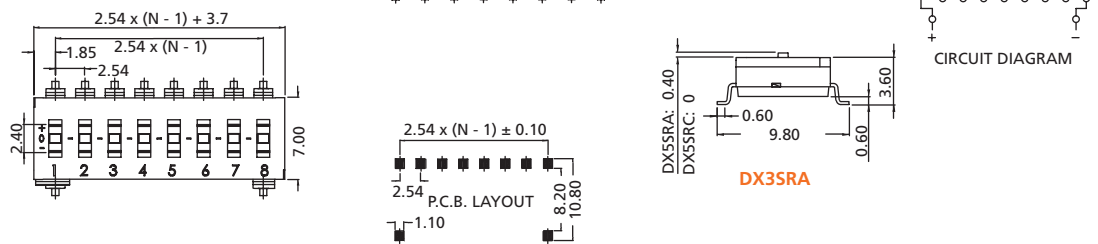
DIP Switches

Tri-State Slide Type DIP Switches

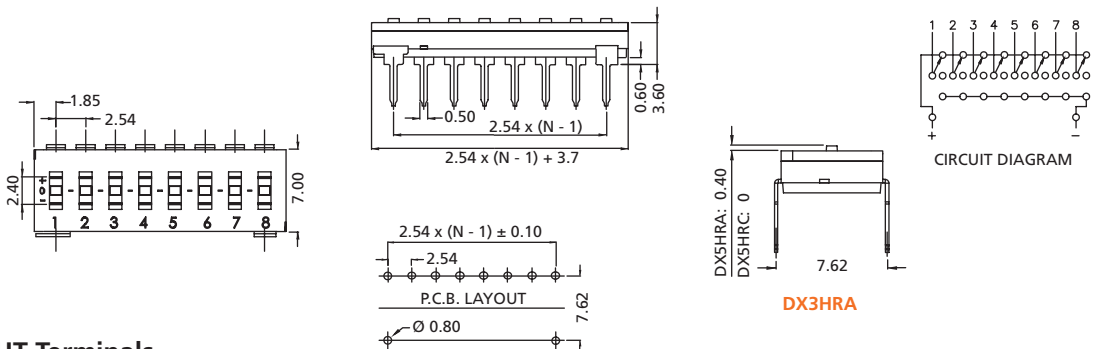
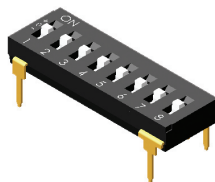
DX3 Series



DX3N Standard THT Terminals



DX3S Low Profile SMT Terminals



DX3H Low Profile THT Terminals

How to order:

DX3

1 TYPE OF DIP-SWITCH:

- N** Standard THT Tri-State DIP Switch
- S** Low Profile SMT Tri-State DIP Switch
- H** Low Profile THT Tri-State DIP Switch

2 ACTUATOR TYPE:

- RA** Raised Actuator
- RC** Recessed Actuator (Only DX3S & DX3H)

4 SEAL:

- N** No Tape (Standard)
- T** Top Tape Sealed (Only DX3SRC & DX3HRC)

3 NO. OF POSITIONS:

- 04** 4 Positions
- 06** 6 Positions (Only DX3S & DX3H)
- 08** 8 Positions
- 09** 9 Positions
- 10** 10 Positions

5 PACKAGE STYLE:

- TB** Tube
- TR** Tape & Reel (Only DX3S)

General Specifications:

FEATURES

- » Setting (+, 0, -) function, much more security code options

MATERIALS

- » Contact: Alloy copper with gold plated
- » Terminal: Brass with tin plated (DX3N)
Brass with gold plated (DX3S & DX3H)

MECHANICAL

- » Mechanical Life: 2,000 operations per switch
- » Operation Force: 1,000 gf max.
- » Stroke: 1.0 mm (DX3N Series); 0.8 mm (DX3S & DX3H)
- » Operation Temperature: -20°C to +70°C (DX3N)
-20°C to +85°C (DX3S & DX3H)
- » Storage Temperature: -40°C to +85°C

ELECTRICAL

- » Electrical Life: 2,000 cycles
- » Non-Switching Rating: 100mA, 50VDC
- » Switching Rating: 25mA, 24VDC
- » Circuit: 3 switching positions

LEADFREE SOLDERING PROCESSES

- » Wave Soldering: Recommended solder temperature at 260°C max. 5 seconds
- » Reflow Soldering: When applying reflow soldering, the peak temperature of the reflow oven should be set to 260°C, max. 10 seconds.

N = No. of positions General Tolerance: ± 0.2 mm

All specifications are restricted to QA test criteria.
DRW: D.L. JIN, CHK: D.F. LEE, APP: H.Z. QIU