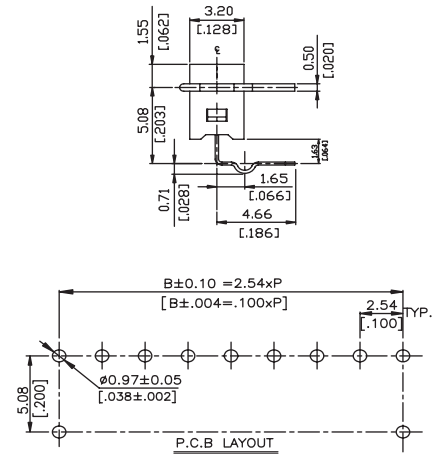
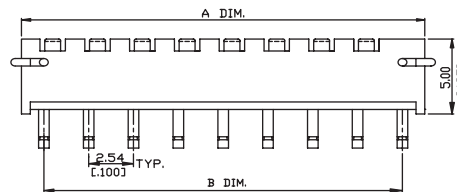
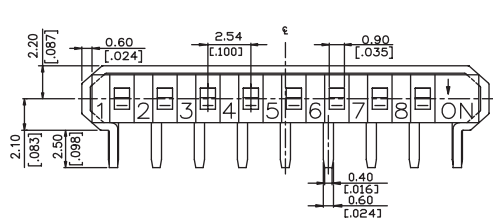
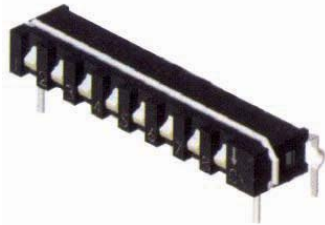


DIP Switches

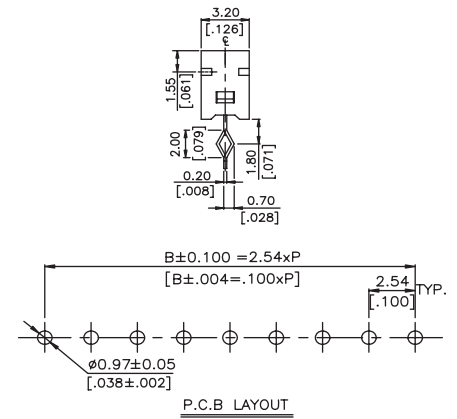
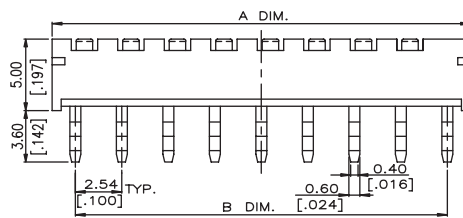
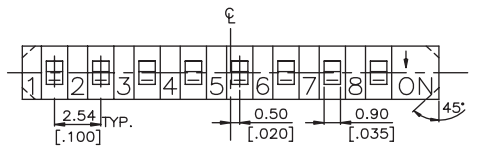
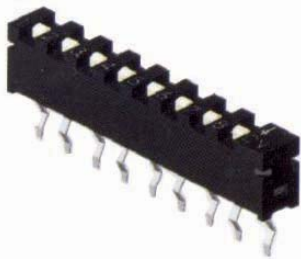
Single In Line DIP Switches (SIP Switches)

DX19 Series



DX19R Right Angle Terminals

General Tolerance : $\pm 0.2\text{mm}$



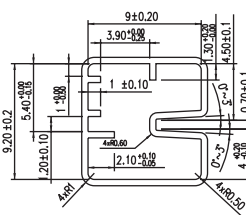
DX19S Straight Terminals

General Tolerance : $\pm 0.2\text{mm}$

Dimension A & B:

DX19_10	10	27.94[1.100]	25.40[1.000]
DX19_08	8	22.86[.900]	20.32[.800]
DX19_06	6	17.78[.700]	15.24[.600]
Dx19_04	4	12.70[.500]	10.16[.400]
DX19_02	2	7.62[.300]	5.08[.200]
PROD. NO.	NO. OF POS.	DIM. A	DIM. B

Tube Dimension:



General Specifications:

MATERIALS

- » Cover: UL 94V-0 Nylon High-Temp Thermoplastic Black
- » Base: UL 94V-0 PBT or Nylon High-Temp Thermoplastic Black
- » Actuator: UL 94V-0 Nylon Thermoplastic White
- » Contact: Alloy Copper with gold plated
- » Terminal: Brass with tin plated

MECHANICAL

- » Mechanical Life: 500 cycles
- » Operation Force: 800 gf
- » Operation Temperature: -30°C to $+80^{\circ}\text{C}$
- » Storage Temperature: -30°C to $+80^{\circ}\text{C}$

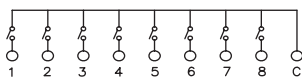
ELECTRICAL

- » Electrical Life: 500 cycles
- » Non-Switching Rating: 100mA, 50VDC
- » Switching Rating: 10mA, 5VDC
- » Circuit: Single pole single throw
- » Contact Resistance at current 100mA: 100m Ω max. at initial, 200m Ω max. after life test
- » Insulation Resistance: 100M Ω min. 500VDC

SOLDERING PROCESSES

- » Wave Soldering: Recommended solder temperature at 260°C max. 5 seconds.
- » Hand Soldering: Use a soldering iron of 30 watts, controlled at 350°C approximately max 5 seconds while applying solder.

Schematic (Typ.):



Packing Unit:

DX19S02TB: 62/tube	DX19R02TB: 56/tube
DX19S04TB: 37/tube	DX19R04TB: 35/tube
DX19S06TB: 27/tube	DX19R06TB: 25/tube
DX19S08TB: 20/tube	DX19R08TB: 20/tube
DX19S10TB: 17/tube	DX19R10TB: 16/tube

How to order:

DX19 1 2 3

1 TYPE OF TERMINALS:

R Right Angle Terminal
S Straight Terminal

2 NO. OF POSITIONS:

02 2 Positions
04 4 Positions
06 6 Positions
08 8 Positions
10 10 Positions

3 PACKAGE STYLE:

TB Tube